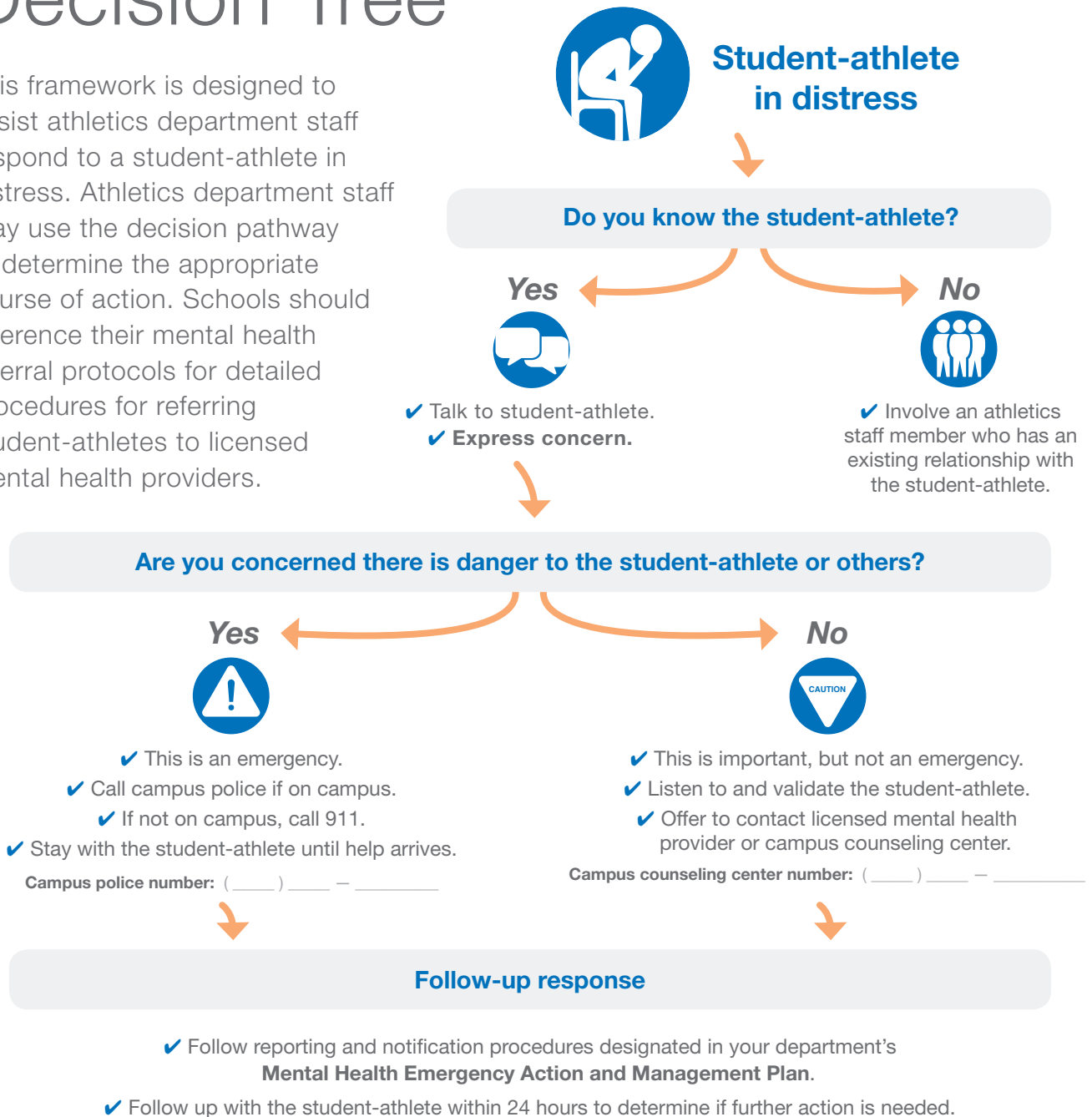


Mental Health Referral Decision Tree

This framework is designed to assist athletics department staff respond to a student-athlete in distress. Athletics department staff may use the decision pathway to determine the appropriate course of action. Schools should reference their mental health referral protocols for detailed procedures for referring student-athletes to licensed mental health providers.



For potential suicide emergencies, contact the National Suicide Prevention Lifeline at 1-800-273-8255.

