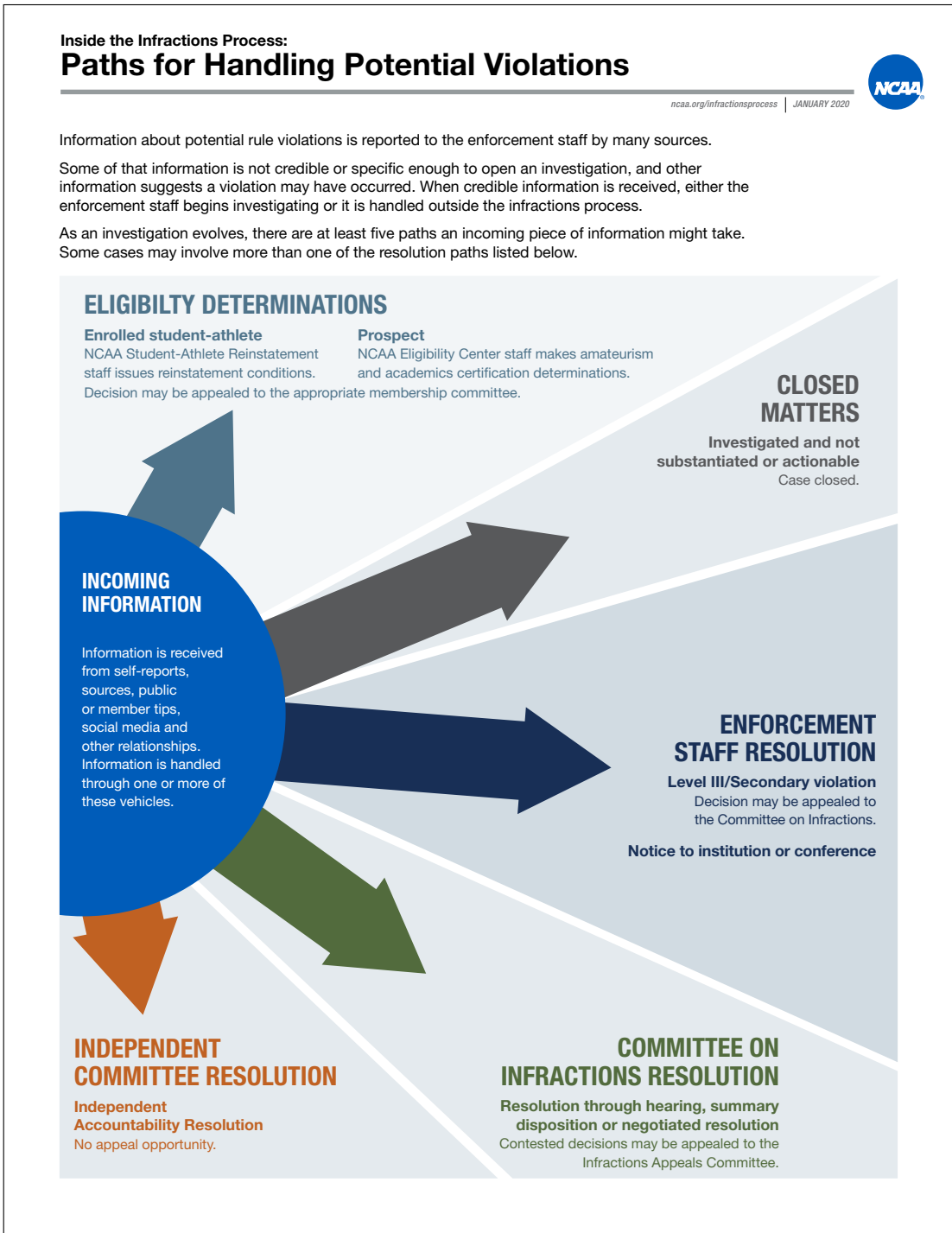


Job details: Use old Infractions case path diagram with updated information and content





Information about potential rule violations is reported to the enforcement staff by many sources.

Some of that information is not credible or specific enough to open an investigation, and other information suggests a violation may have occurred. When credible information is received, either the enforcement staff begins investigating or it is handled outside the infractions process.

As an investigation evolves, there are at least five paths an incoming piece of information might take. Some cases may involve more than one of the resolution paths listed below.

