

RACE/ETHNICITY RESOURCES: WEBSITES & TED TALKS

COMPILED BY NCAA OFFICE OF INCLUSION



**BLACK
LIVES
MATTER**

Q

DONATE

SIGN THE PETITION

See the demands. Sign the petition. [#DefundThePolice](#)

Join the Movement to fight for Freedom, Liberation and Justice by signing up for updates, supporting our work, checking out our resources, following us on social media, or wearing our dope, official gear.

Sign up here for updates on special launches,
network actions, programs, partnerships, and
more!



FIRST NAME

LAST NAME

EMAIL *

Facing History and Ourselves

[Register for our Webinar: Back to School: Attending to Students' Social-Emotional Needs in the New Normal](#) [LEARN MORE](#) ×

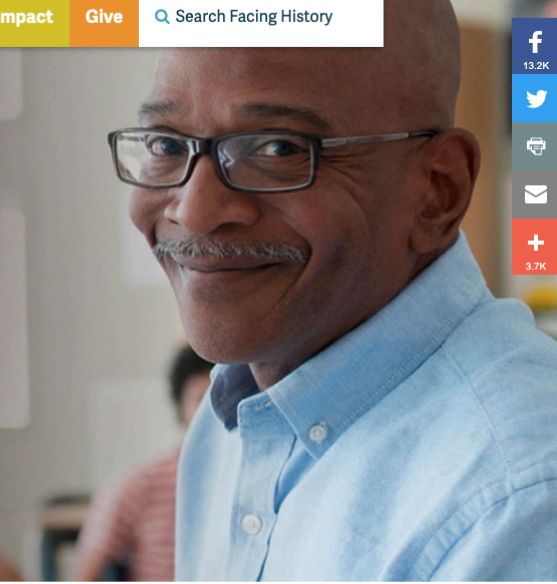
 [About Us](#) [Topics](#) [Educator Resources](#) [Professional Development](#) [Get Involved](#) [Create Account](#) [Sign In](#) 






[Why Facing History](#) [Our Work](#) [Our Impact](#) [Give](#)


People Make Choices. Choices Make History.

We help students learn about hatred and bigotry so they can stop them from happening in the future.

[LEARN MORE →](#)

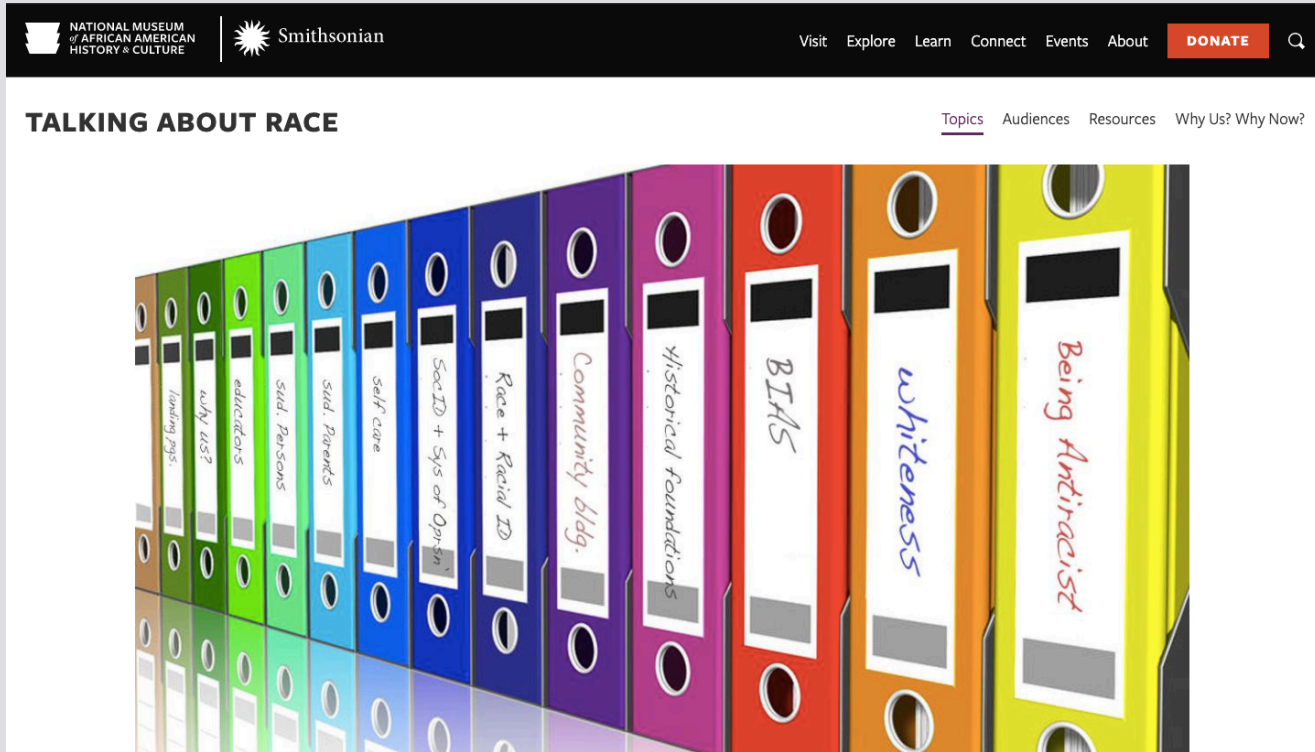


 13.2K



 3.7K

 [Contact us](#)



National Museum of African American History & Culture: Talking About Race



Racial Equity Tools



RACIAL EQUITY TOOLS

[HOME](#)

[ABOUT US](#)

[GLOSSARY](#)

[FAQ](#)

[SEARCH](#)

[FUNDAMENTALS](#)

[PLAN](#)

[ACT](#)

[EVALUATE](#)

[CONNECT](#)

[CURRICULA](#)

[Home](#) / [Plan](#) / [Change process](#)

Individual Transformation

Everyone is impacted by the system of racism, and therefore has to tenaciously walk against that system. As [Beverly Daniel Tatum](#) describes, *"I sometimes visualize the ongoing cycle of racism as a moving walkway at the airport. Active racist behavior is equivalent to walking fast on the conveyor belt...Passive racist behavior is equivalent to standing still on the walkway. No overt effort is being made, but the conveyor belt moves the bystanders along to the same destination as those who are actively walking. Some of the bystanders may feel the motion of the conveyor belt, see the active racists ahead of them, and choose to turn around...But unless they are walking actively in the opposite direction at a speed faster than the conveyor belt – unless they are actively antiracist – they will find themselves carried along with the others."* Whites and people of color are both impacted by structural racism, though the costs and consequences are significantly different, and our awareness of the system usually also differs greatly. Working for racial equity at the individual level often involves understanding the concepts, building the confidence and skills to work toward racial justice, and being accountable.

The system of racism is set up to be manipulative, enigmatic, and vicious, which means it is critical to be supportive of each other, to not expect perfection, to always remember our linked fate, and also to take time for self-care.

📌 Barriers to Organizing Between Anti-Racist White People

Joanie Mayer

📌 Guidelines for Being Strong White Allies

Paul Kivel

📌 The Journey from Mind to Spirit

Lisa Charley, Movement Strategy Center

📌 Moving Beyond White Guilt

Amy Edgington



Tipsheet: How Can We Avoid "Blaming The Victim" When We Present Information On Poor Outcomes For Different Groups In Our Community? »

GLOSSARY

[Movement Building](#)

[Cultural Racism](#)

[Racial Equity](#)

Resources for Educators Focusing on Anti-Racist Learning and Teaching

EARLY CHILDHOOD EDUCATION ASSEMBLY AWARDS SCHOLARSHIPS JOURNAL: PERSPECTIVES AND PROVOCATIONS

PROFESSIONAL DYADS AND CULTURALLY RELEVANT TEACHING (PDCRT) ECEA ACTION STATEMENTS

RESOURCES FOR EDUCATORS FOCUSING ON ANTI-RACIST LEARNING AND TEACHING

ANTI-RACISM EDUCATIONAL CONSULTANTS NETWORK


Resources for Educators Focusing on Anti-Racist Learning and Teaching

**Resources for Educators Focusing on Anti-Racist Learning
and Teaching**

USC Race and Equity Center

USC Race and Equity Center

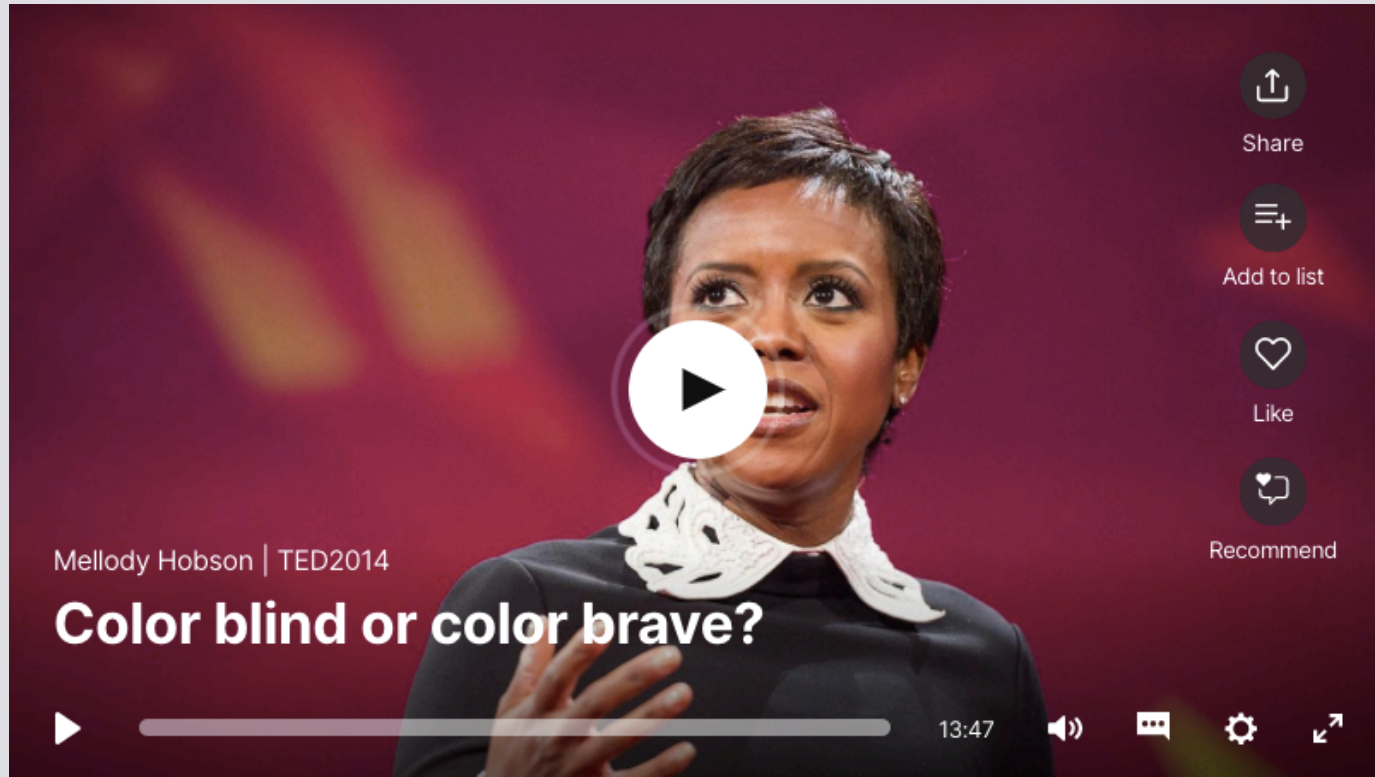
USC University of Southern California



ABOUT US

The University of Southern California is home to a dynamic research and organizational improvement center that works with professionals in educational institutions, corporations,

Mellody Hobson: Color blind or color brave?



Clint Smith: The danger of silence



Clint Smith: How to raise a black son in America



Bryan Stevenson: We need to talk about an injustice



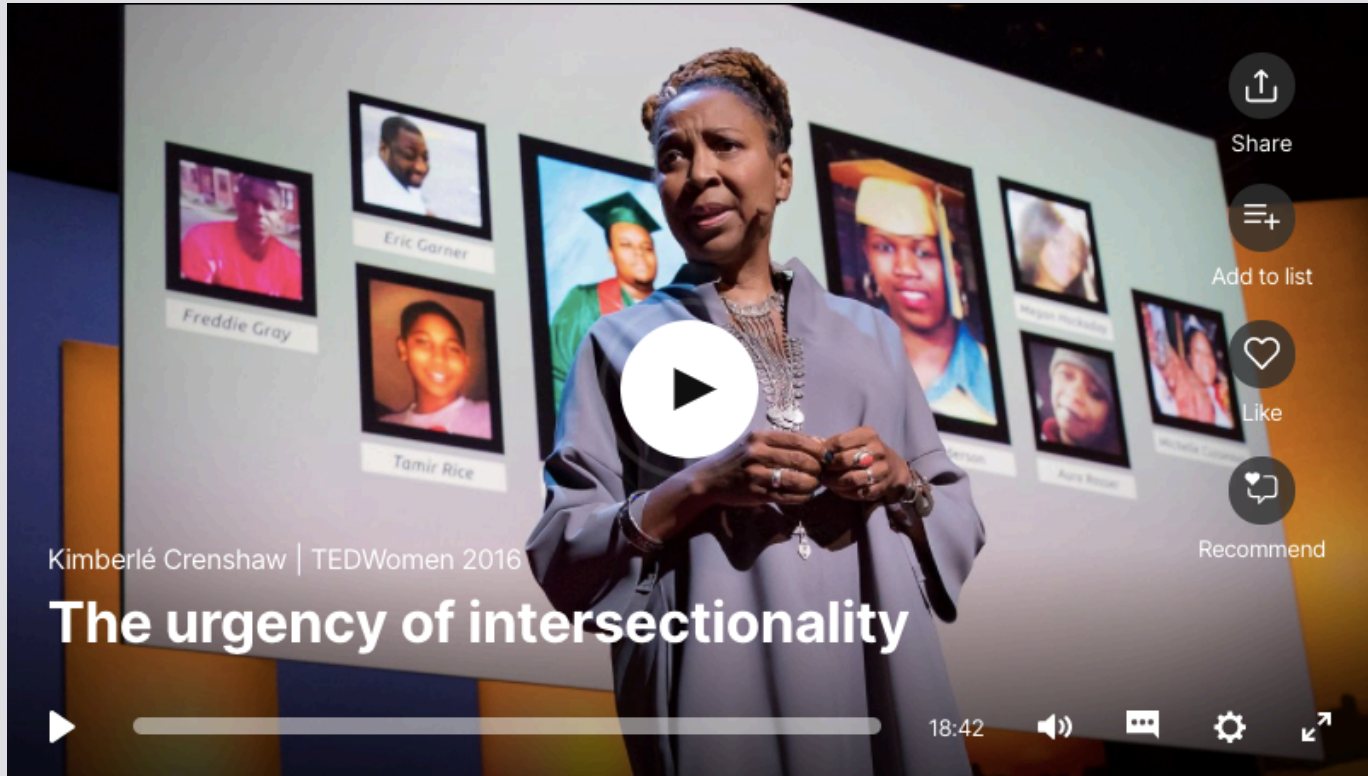
Bryan Stevenson: The Power of Proximity



Camara Jones: Allegories on race & racism



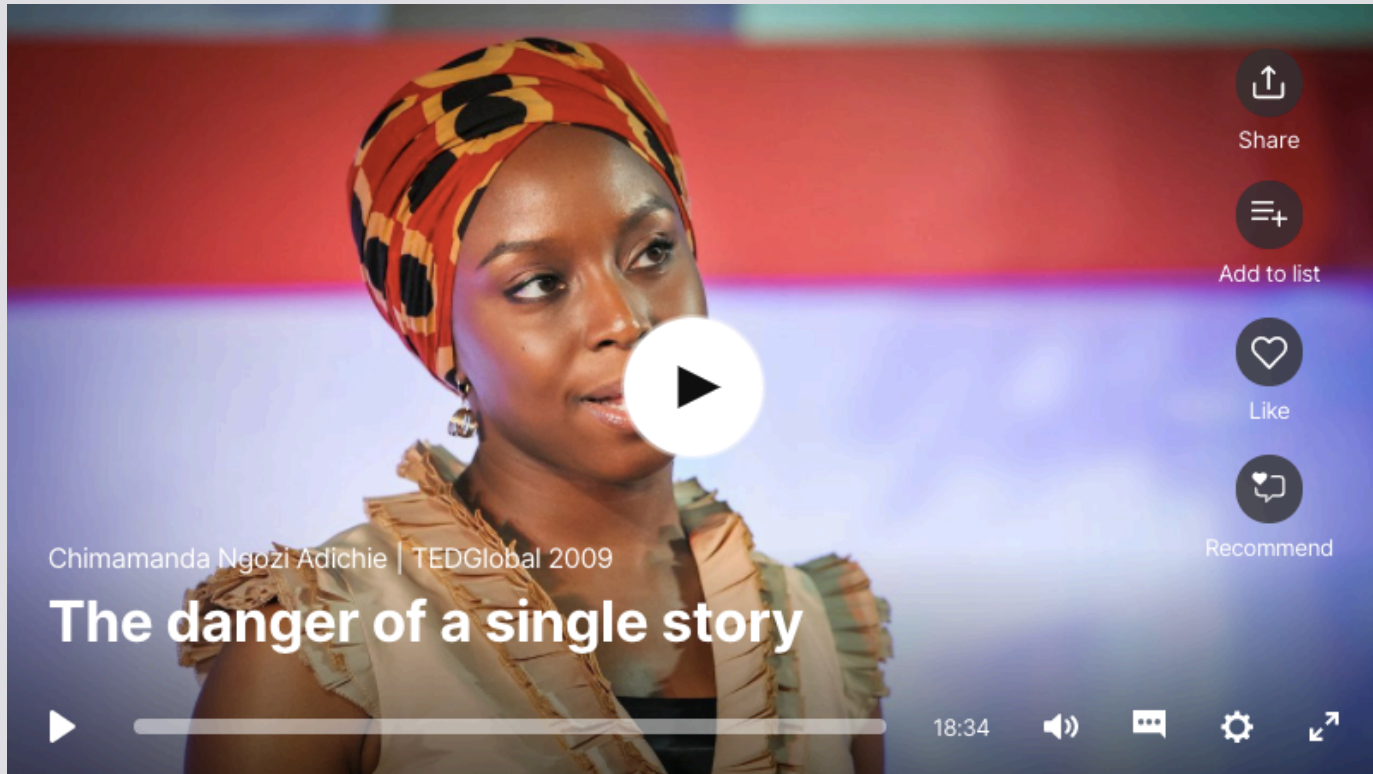
Kimberlé Crenshaw: The urgency of intersectionality



An interview with the founders of Black Lives Matter



Chimamanda Ngozi Adichie: The danger of a single story



Tim Wise: Higher Education's Urgent Imperative to Become Anti-Racist

