



1

---

---

---

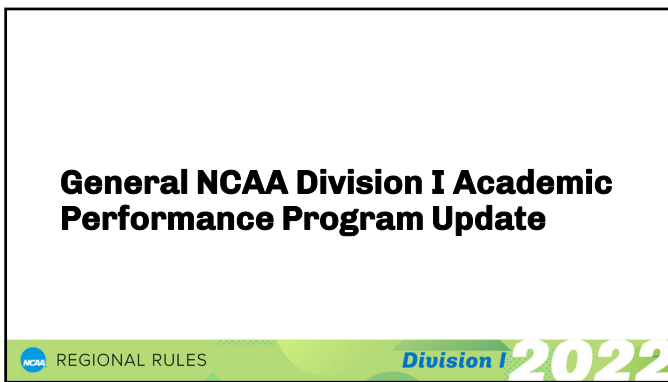
---

---

---

---

---



2

---

---

---

---

---

---

---

---



3

---

---

---

---

---

---

---

---

## Overview of APP

NCAA REGIONAL RULES

Division I 2022

4

---

---

---

---

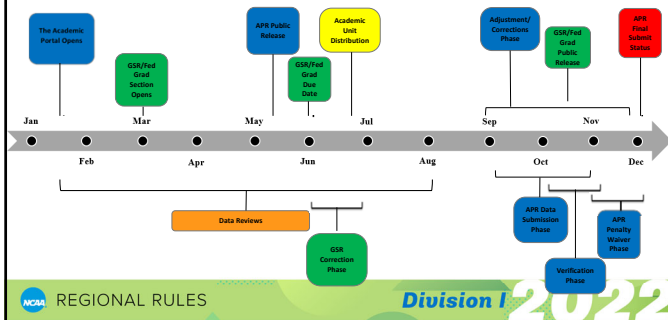
---

---

---

---

## APP Process Overview Timeline



NCAA REGIONAL RULES

Division I 2022

5

---

---

---

---

---

---

---

---

## APP Data Collection

NCAA Division I Graduation Success Rate

NCAA Division I Academic Progress Rate

NCAA REGIONAL RULES

Division I 2022

6

---

---

---

---

---

---

---

---

## Graduation Success Rate

- Annual submission deadline of June 1.
- Outcome at end of six-year period.
- Calculated for every sport and reported as a four-year rate.
- More specific than Federal Graduation Rates.
  - Starts with Federal Graduation Rate calculation
  - Includes:
    - > Transfers into an institution; and
    - > Midyear enrollees.
  - Removes:
    - > Student-athletes who withdraw and would have been academically eligible to compete the next term had they returned.

NCAA REGIONAL RULES

Division I 2022

7

---

---

---

---

---

---

---

---

## GSR Calculation

- For each team, determine number of student-athletes in entering cohort (e.g., first time full-time freshman enrolled full time on athletics aid).
- Add midyear enrollees (i.e., January enrollees) and transfers.
- Remove student-athletes who leave institution but would have been academically eligible to compete if they return.

$$\frac{\text{Number of graduates}}{\text{Number SAs in cohort}} \times 100 = \text{Team GSR}$$

NCAA REGIONAL RULES

Division I 2022

8

---

---

---

---

---

---

---

---

## Academic Progress Rate

- Real-time rate, calculated term-by-term.
- Includes all student-athletes on a team in a given year (as opposed to entering class).
- Who is in the cohort?

\$ Based on any degree of athletics ability **AND** Full-Time Enrollment

As of the institution's 5<sup>th</sup> week of class or official census date, whichever is earlier

NCAA REGIONAL RULES

Division I 2022

9

---

---

---

---

---

---

---

---

## Academic Progress Rate

- Reported as a four-year rate.
- Submitted data is from the previous academic year.
- Used in analysis for postseason competition, APP penalties and public recognition of top academically performing teams.
- Annual submission deadline eight weeks after the first date of class of institution's fall term.

NCAA REGIONAL RULES

Division I 2022

10

---

---

---

---

---

---

---

---

## APR Calculation

- Points awarded for eligibility/graduation and retention.
- Two available points each academic term.
- Eligibility "E" point = student-athlete meets academic eligibility standards *as of the end of the academic term*.
- Retention "R" point = student-athlete is enrolled full time as of the census date or the fifth week of classes *of the next term*.

NCAA REGIONAL RULES

$\times 1000$  = Team APR

Division I 2022

11

---

---

---

---

---

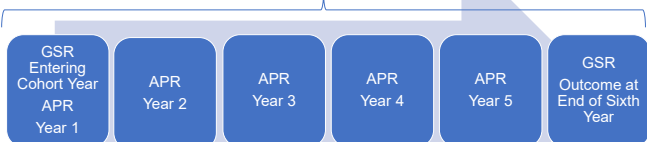
---

---

---

## APP Student-Athlete Academic Metrics

### Six-Year Graduation Rate



### Real-Time Academic Rate

NCAA REGIONAL RULES

Division I 2022

12

---

---

---

---

---

---

---

---

## Update on Status of APP

NCAA REGIONAL RULES

Division I 2022

13

## Suspension of APR Penalties/Access to Postseason Competition

**Current state:** APP penalties and loss of access to postseason have been suspended since fall 2020.

- No penalties and loss of access to postseason competition imposed 2021 and 2022.
- No public release of APRs in 2021 and 2022.
- No public recognition of highest performing teams in 2021 and 2022.
- No public release of head coaches' APR in 2021 and 2022.
- Continued data collection for both APR and GSR; adjustments and corrections available.
- Continued the public release of GSR.
- Continued APP Data Reviews.
- Continued using single-year APRs for eligibility for the Academic Unit.

NCAA REGIONAL RULES

NCAA Division I Committee on Academics

Division I 2022

14

## Suspension of APR Penalties/Access to Postseason Competition

**April Committee on Academics Recommendation:** Continue to suspend APP penalties and loss of access to postseason competition for one more year.

- Reinstate the public release of APRs in summer 2022.
- Reinstate the release of head coaches' APR in summer 2022.
- No penalties and loss of access to postseason competition imposed 2023.
- No public recognition of highest performing teams in 2023.
- Continue data collection for both APR and GSR; adjustments and corrections available.
- Continue the public release of GSR.
- Continue APP Data Reviews.
- Continue using single-year APRs for eligibility for the Academic Unit.

NCAA REGIONAL RULES

NCAA Division I Committee on Academics

Division I 2022

15

## Suspension of APR Penalties/Access to Postseason Competition

### Rationale:

- Committee continues to review the metric and its impact on teams, especially Historically Black Colleges and Universities, limited-resource institutions, and other schools and student-athletes that may have experienced unique or difficult challenges during the pandemic.
- The review will continue over the next several months and may result in changes to certain aspects of the program.
- *After completing its review, the committee is committed to restarting this important program while ensuring the framework is structured to effectively and equitably facilitate program objectives related to academic success.*

16

---

---

---

---

---

---

---

---

## Suspension of APR Penalties/Access to Postseason Competition

Data Year	Data Years in the Multi-Year APR	Data Submitted	Public Release	Year Penalty Taken	Penalties
2018-19	15-16, 16-17, 17-18, 18-19	Fall 2019	May 2020	2020-21	Level 1 and 2 No Postseason
2019-20	16-17, 17-18, 18-19, 19-20	Fall 2020	No Release	2021-22	No Penalties
2020-21	17-18, 18-19, 19-20, 20-21	Fall 2021	Summer 2022	2022-23	No Penalties
2021-22	18-19, 19-20, 20-21, 21-22	Fall 2022	May 2023	2023-24	No Penalties
2022-23	19-20, 20-21, 21-22, 22-23	Fall 2023	May 2024	2024-25	Level 1 and 2 No Postseason
2023-24	20-21, 21-22, 22-23, 23-24	Fall 2024	May 2025	2025-26	Level 1 and 2 No Postseason
2024-25	21-22, 22-23, 23-24, 24-25	Fall 2025	May 2026	2026-27	Level 1 and 2 No Postseason

17

---

---

---

---

---

---

---

---

## Thank you!

- Contact Information
  - Leilani Hubbard, Assistant Director of Academic and Membership Affairs, [lhubbard@ncaa.org](mailto:lhubbard@ncaa.org)
  - Sadie Martinez, Administrative Assistant of Law, Policy and Governance, [smartinez@ncaa.org](mailto:smartinez@ncaa.org)
  - DeAnna Wiley, Assistant Director of Academic and Membership Affairs, [dwiley@ncaa.org](mailto:dwiley@ncaa.org)

18

---

---

---

---

---

---

---

---



19

---

---

---

---

---

---

---