

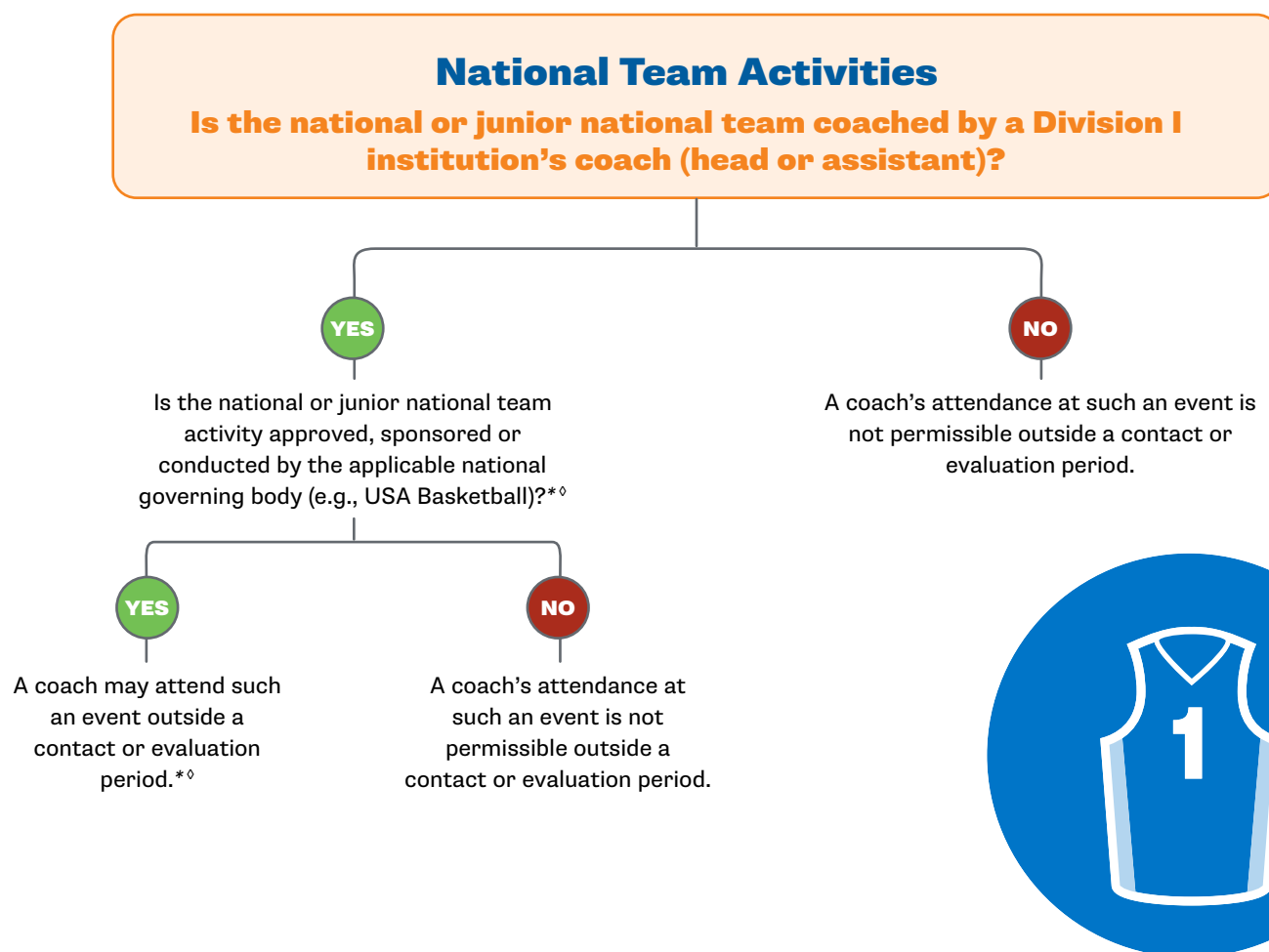
Coaches' Attendance at National Team Activities and Elite Level Events

This document is intended to assist the membership in determining if an event meets the criteria set forth in NCAA legislation for national team activities, regional championships approved, sponsored or conducted by FIBA and elite and junior level international events.

COACHES' ATTENDANCE AT NATIONAL TEAM ACTIVITIES ANALYSIS

NCAA Bylaw 13.1.7.6.8-(a)

Up to two coaching staff members per institution per calendar day may attend any live organized athletic activity (e.g., training camps, mini-camps, tryouts, intra-squad competition) involving a national team, including junior level teams (e.g., U18 national team), outside a contact or evaluation period, provided the team is coached by a Division I institution's coach (head or assistant) or has a Division I coach involved (e.g., floor coach, selection committee member, evaluator) and the activity is approved, sponsored or conducted by the applicable national governing body (e.g., USA Basketball).



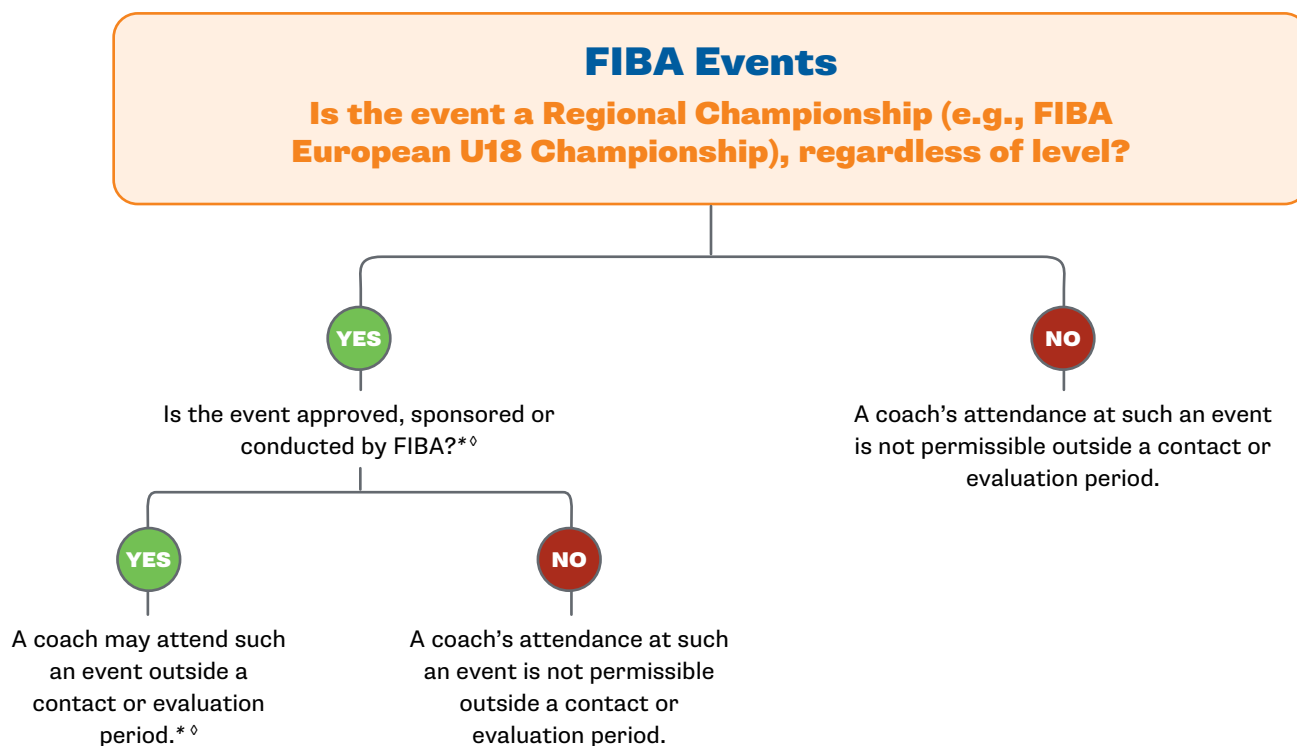
* **Subject to any additional attendance restrictions by the NGB.**

◇ **Coaches may not attend these events during a recruiting shutdown period.**

COACHES' ATTENDANCE AT REGIONAL CHAMPIONSHIPS APPROVED, SPONSORED OR CONDUCTED BY FIBA ANALYSIS

NCAA Bylaw 13.1.7.6.8-(b)

Up to two coaching staff members per institution per calendar day may attend any regional championship [e.g., International Basketball Federation (FIBA) U18 European Championship, FIBA Americas U18 Championship, etc.] that is approved, sponsored or conducted by FIBA. A coaching staff member may attend organized practices associated with FIBA Regional Championship events, provided the practice time has been designated as part of the event by the event organizer.



* **Subject to any additional attendance restrictions by FIBA.**

◇ **Coaches may not attend these events during a recruiting shutdown period.**

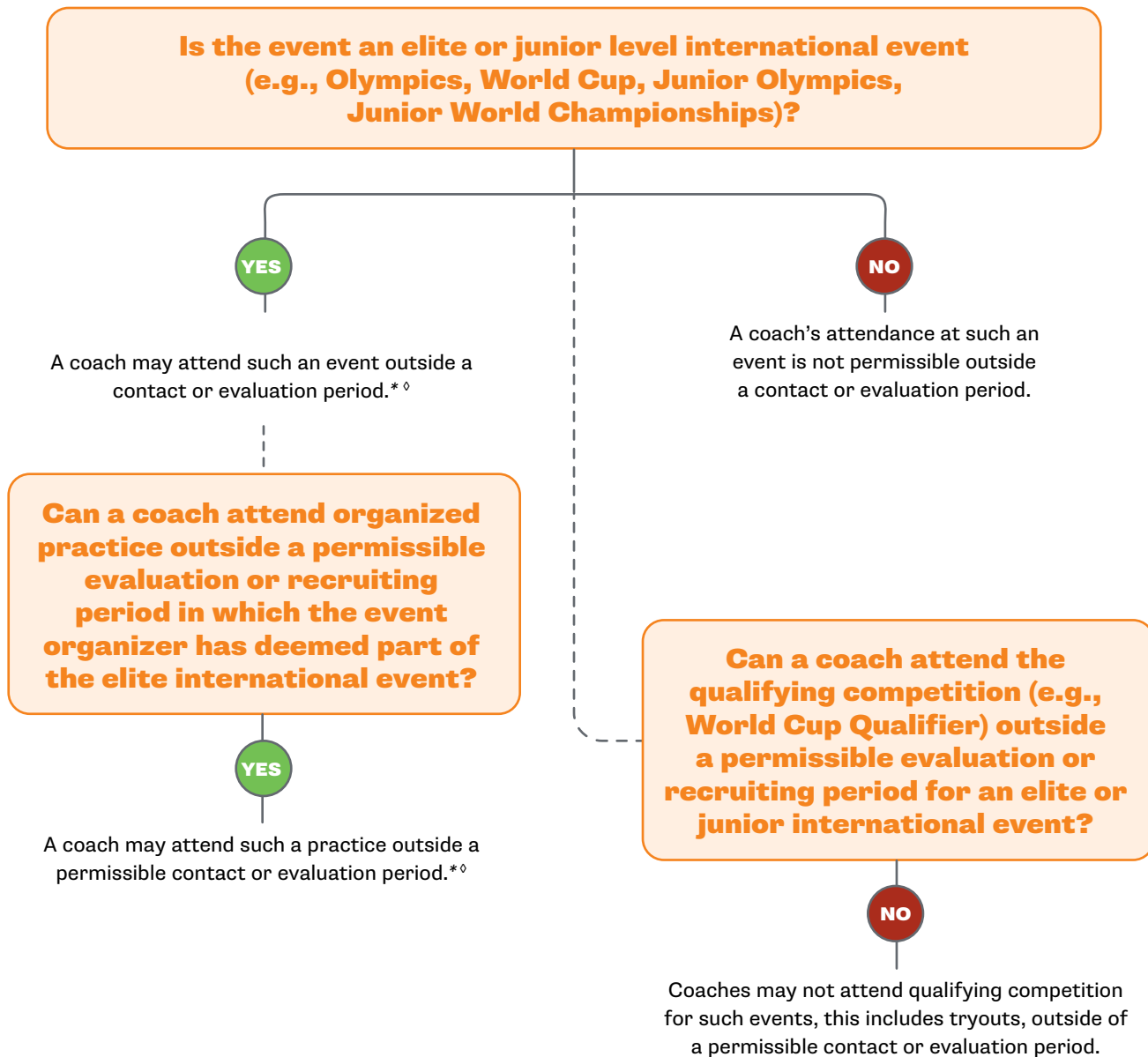


COACHES' ATTENDANCE AT ELITE AND JUNIOR LEVEL INTERNATIONAL EVENTS ANALYSIS

NCAA Bylaw 13.1.7.16

Coaches may attend Olympic, Pan American, World Championships, World Cup, World University Games (Universiade) or World University Championships competition or the junior level equivalent competition (e.g., Youth Olympic Games, Junior World Championships, U19 World University Games) that occurs outside permissible contact and evaluation periods. Additionally, coaches may attend organized practices associated with the elite or junior level international event provided the practice time has been designated as part of the event by the event organizer.

Coaches' attendance at qualifying competition for such events, including tryouts, remains subject to the applicable recruiting calendars.



* Subject to any additional attendance restrictions by the operators of the events.

◇ Coaches may not attend these events during a recruiting shutdown period.