

Coaches' Attendance at National Team Activities and Elite Level Events

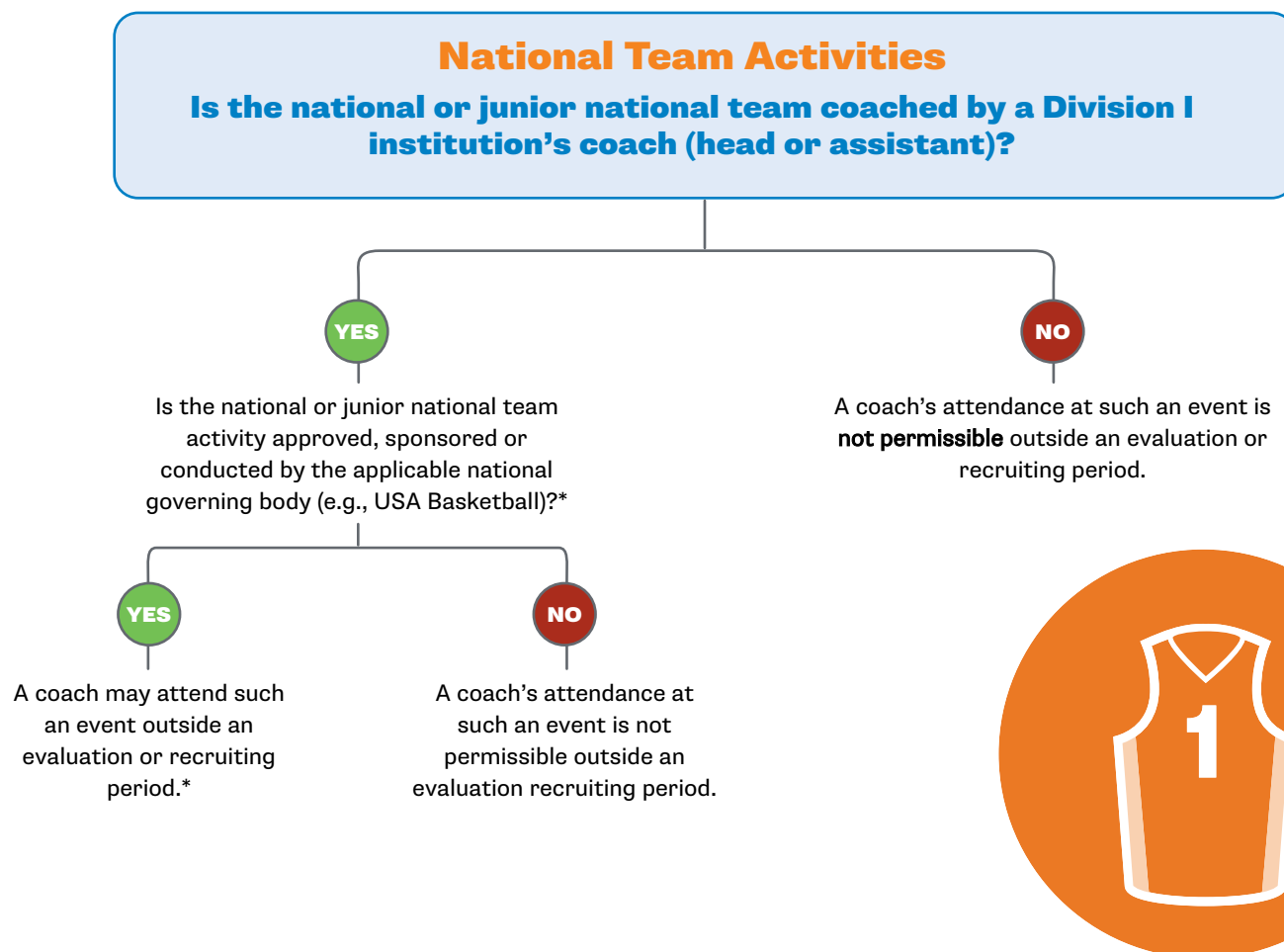
This document is intended to assist the membership in determining if an event meets the criteria of national team activities, regional championships approved, sponsored or conducted by FIBA and elite and junior level international events set forth in NCAA legislation.

COACHES' ATTENDANCE AT NATIONAL TEAM ACTIVITIES ANALYSIS

NCAA Bylaw 13.1.7.5.6.1

A coaching staff member may attend a live organized athletic activity (e.g., training camps, mini-camps, tryouts, competition) involving a national team, including junior level teams (e.g., U18 national team), outside an evaluation or recruiting period, provided the team is coached by a Division I institution's coach (head or assistant) and the activity is approved, sponsored or conducted by the applicable national governing body (e.g., USA Basketball).

Pursuant to NCAA Bylaw 13.1.7.5.6.2, during June, July and August, a coaching staff member's attendance at a USA Basketball Junior National Team mini-camp is not subject to the restrictions of the men's basketball recruiting calendar.

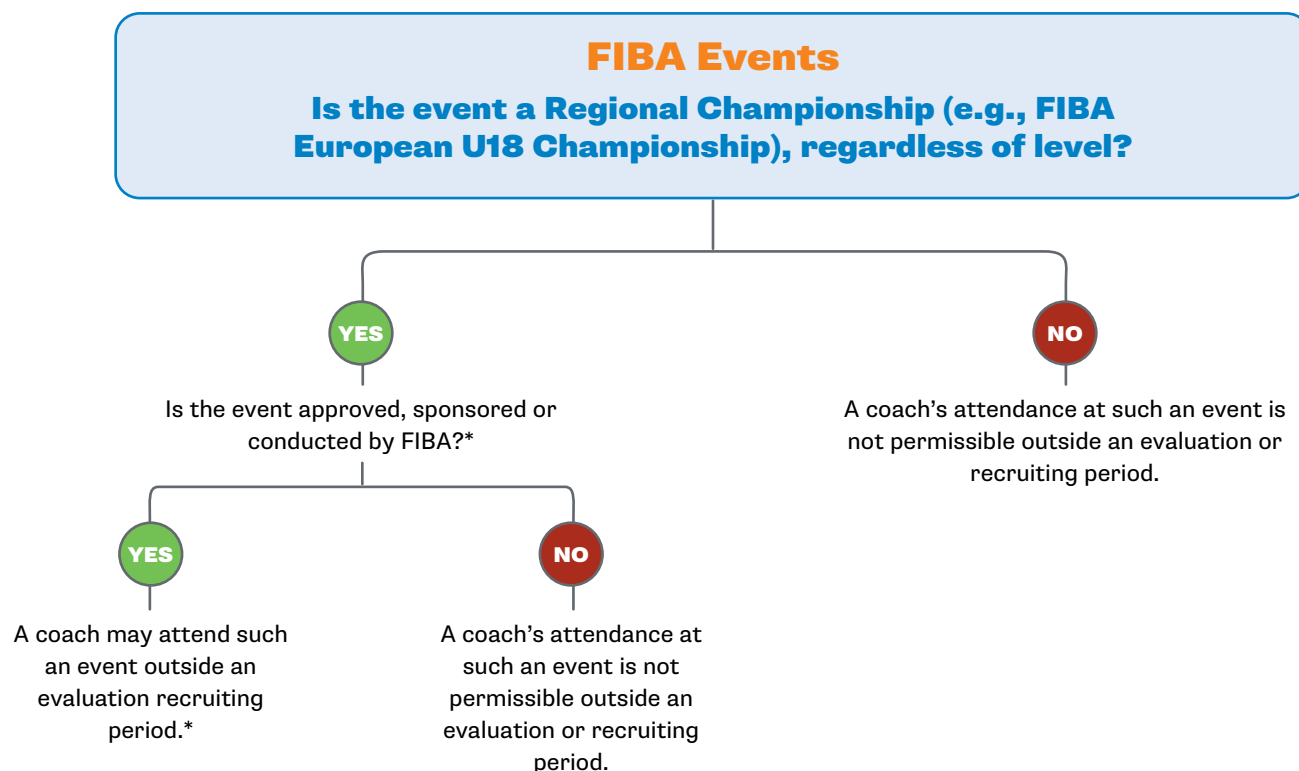


* **Subject to any additional attendance restrictions by the NGB.**

COACHES' ATTENDANCE AT REGIONAL CHAMPIONSHIPS APPROVED, SPONSORED OR CONDUCTED BY FIBA ANALYSIS

NCAA Bylaw 13.1.7.5.7

A coaching staff member may attend regional championships (e.g., FIBA U18 European Championship, FIBA Americas U18 Championship, etc.) that are approved, sponsored or conducted by International Basketball Federation (FIBA) outside permissible recruiting and evaluation periods. A coaching staff member may attend organized practices associated with such events, provided the practice time has been designated as part of the event by the event organizer.



* **Subject to any additional attendance restrictions by FIBA.**

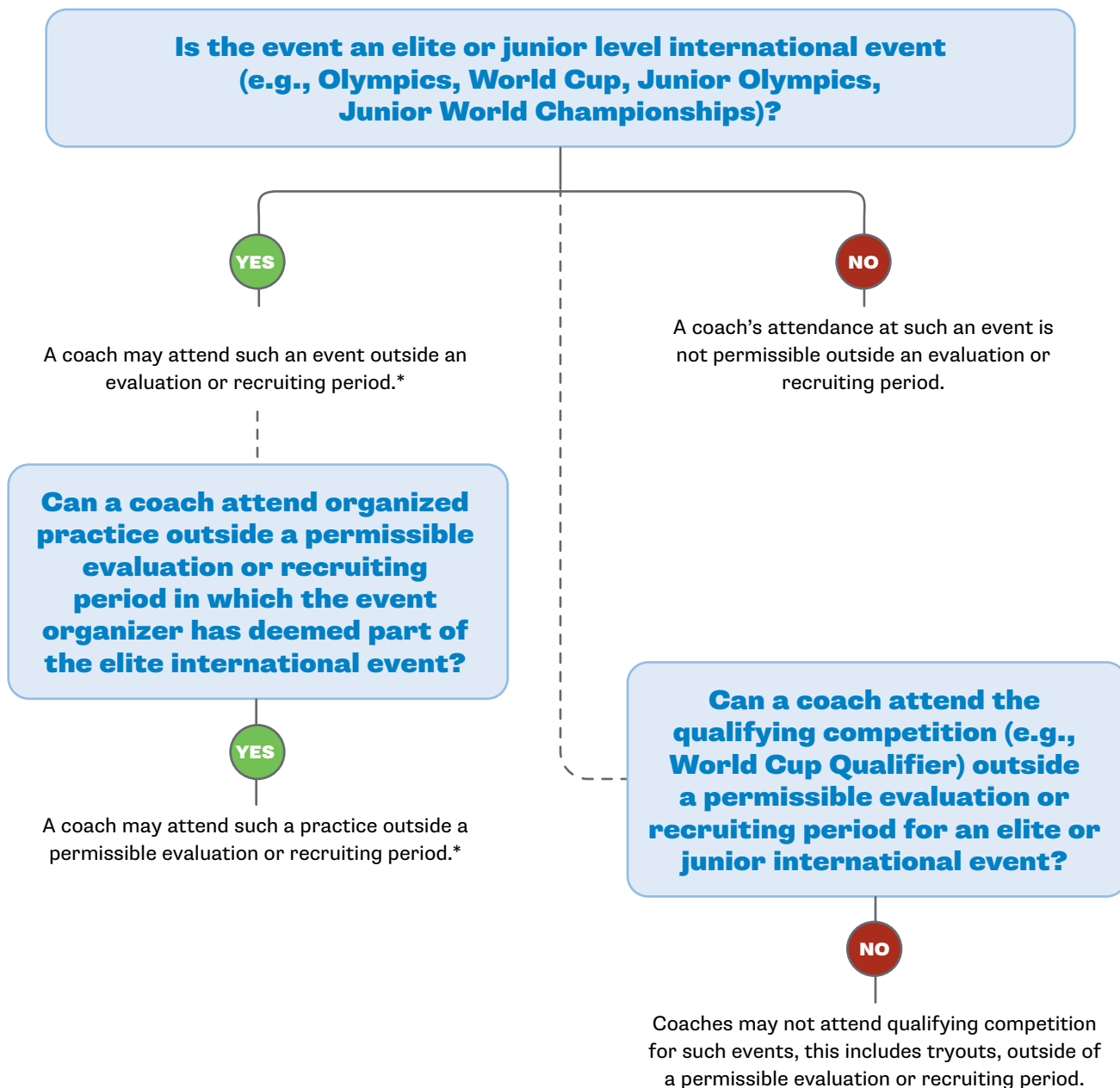


COACHES' ATTENDANCE AT ELITE AND JUNIOR LEVEL INTERNATIONAL EVENTS ANALYSIS

NCAA Bylaw 13.1.7.16

Coaches may attend Olympic, Pan American, World Championships, World Cup, World University Games (Universiade) or World University Championships competition or the junior level equivalent competition (e.g., Youth Olympic Games, Junior World Championships, U19 World University Games) that occurs outside permissible evaluation or recruiting periods. Additionally, coaches may attend organized practices associated with the elite or junior level international event provided the practice time has been designated as part of the event by the event organizer.

Coaches' attendance at qualifying competition for such events, including tryouts, remains subject to the applicable recruiting calendars.



* Subject to any additional attendance restrictions by the operators of the events.