

## NCAA Division I Women's Basketball

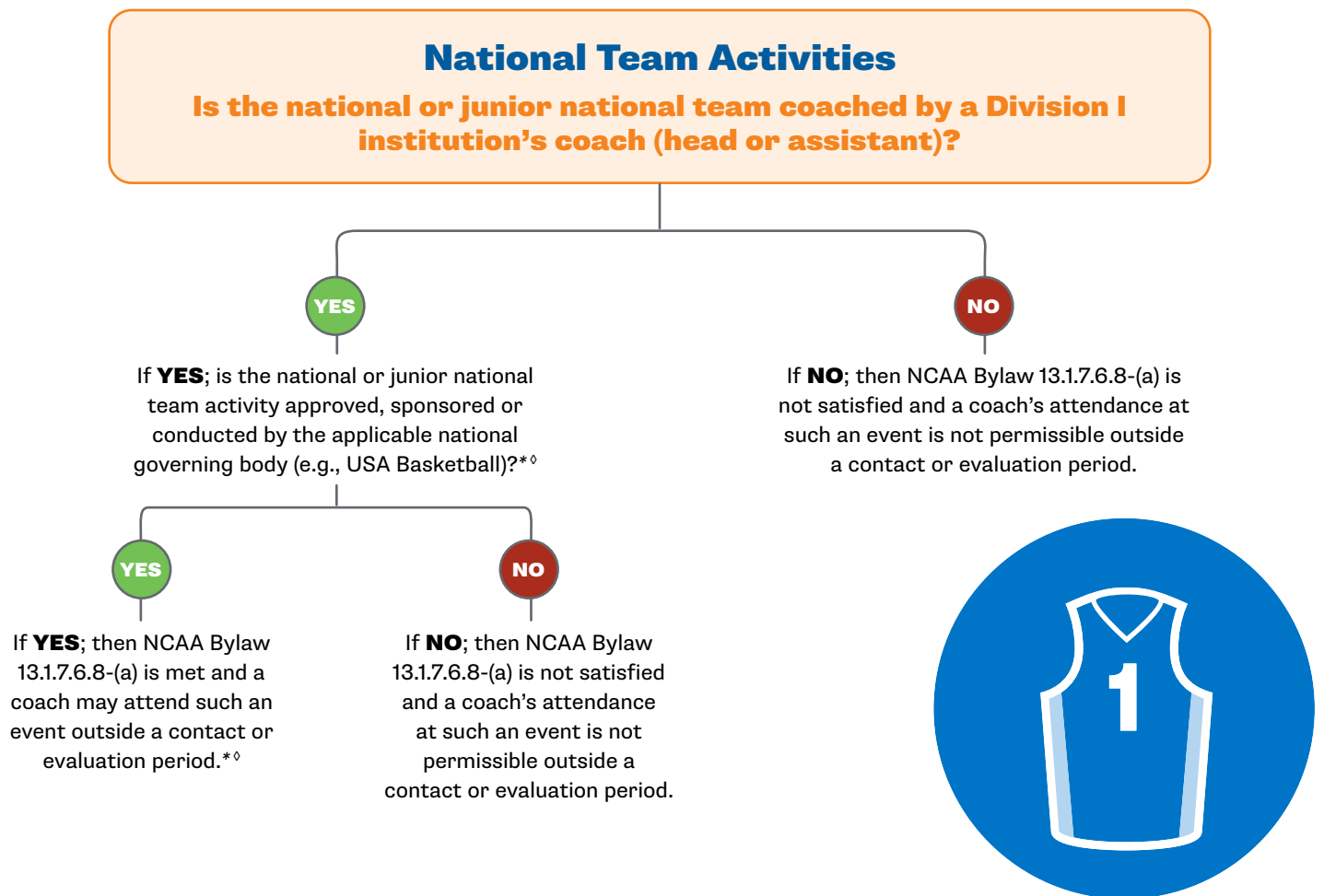
# Coaches' Attendance at National Team Activities and Elite Level Events

The below graphics are meant to provide guidance to the membership and empower compliance administrators to evaluate applicable events and have the autonomy to determine if events meet the criteria of national team activities, regional championships approved, sponsored or conducted by FIBA and elite and junior level international events set forth in NCAA legislation.

### COACHES' ATTENDANCE AT NATIONAL TEAM ACTIVITIES ANALYSIS

#### NCAA Bylaw 13.1.7.6.8-(a)

A coaching staff member may attend a live organized athletic activity (e.g., training camps, minicamps, tryouts, competition) involving a national team, including junior level teams (e.g., U18 national team), outside a contact or evaluation period, provided the team is coached by a Division I institution's coach (head or assistant) and the activity is approved, sponsored or conducted by the applicable national governing body (e.g., USA Basketball).



\* Subject to any additional attendance restrictions by the NGB.

◇ Coaches may not attend these events during a recruiting shutdown period.

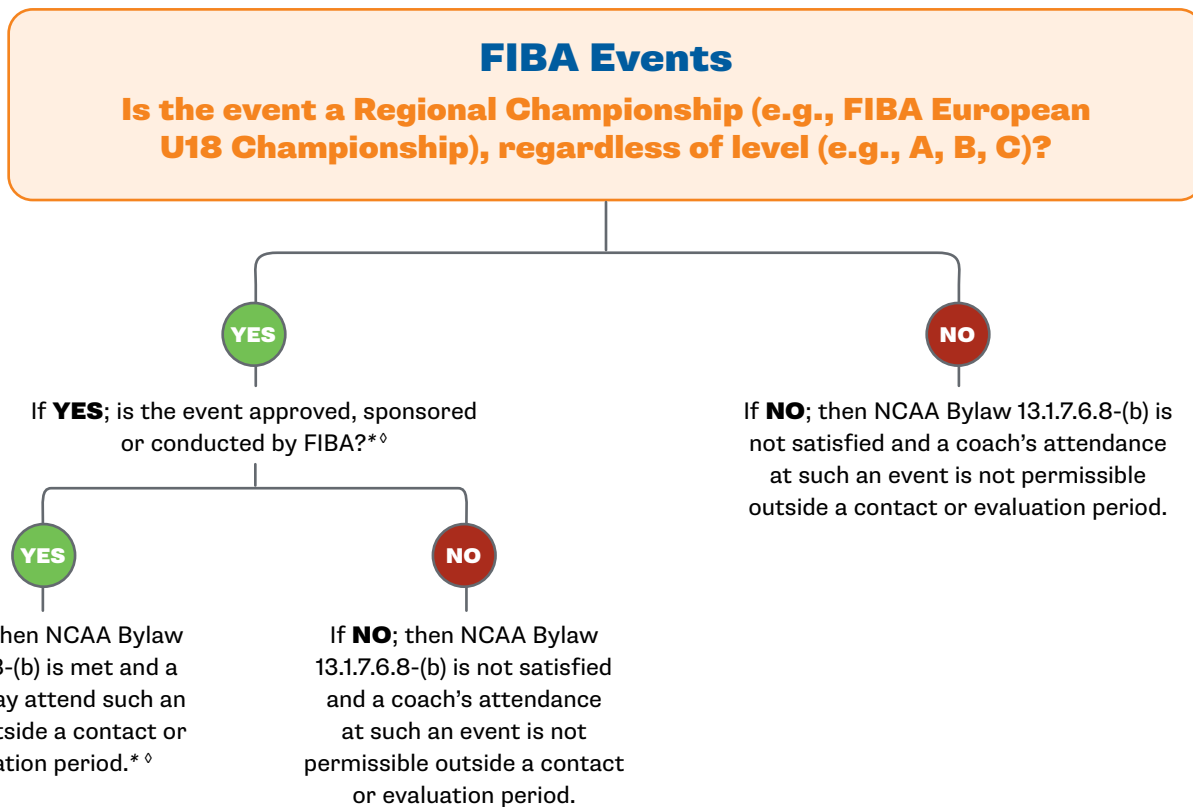


## COACHES' ATTENDANCE AT REGIONAL CHAMPIONSHIPS APPROVED, SPONSORED OR CONDUCTED BY FIBA ANALYSIS

### NCAA Bylaw 13.1.7.6.8-(b)

A regional championship is intended to include a group of nations (e.g., several countries from one continent, region of continent) participating in an elite level championship. It is not intended to include, for example, a team from the southeast region (e.g., South Carolina, Virginia) of the United States competing against a team from the northwest region (e.g., Washington, Oregon) of the United States.

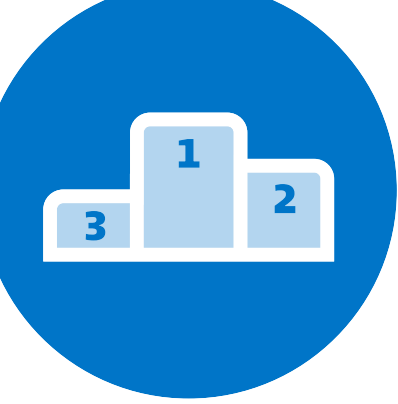
A coaching staff member may attend organized practices associated with FIBA Regional Championship events, provided the practice time has been designated as part of the event by the event organizer.



\* Subject to any additional attendance restrictions by FIBA.

◇ Coaches may not attend these events during a recruiting shutdown period.



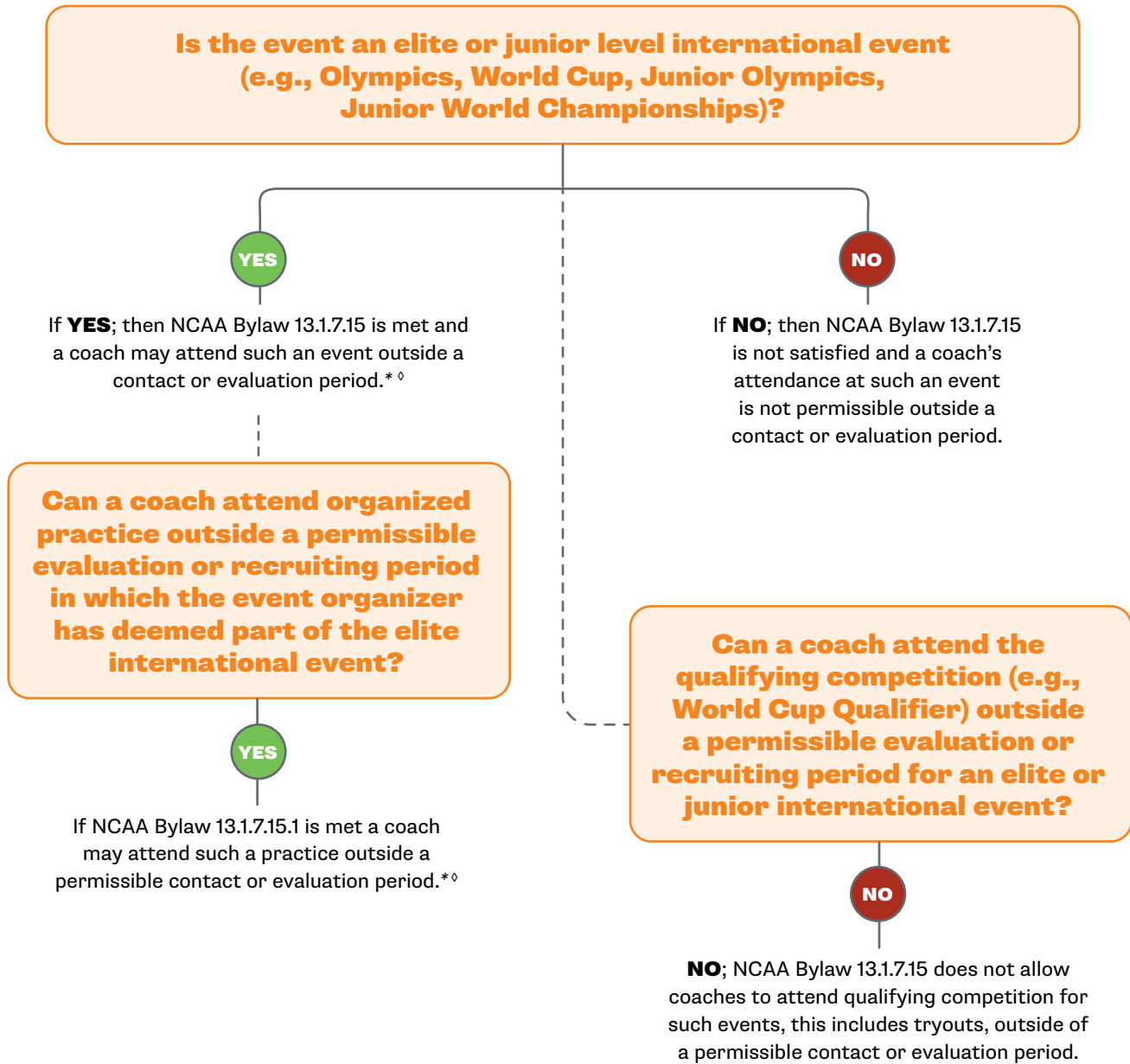


## COACHES' ATTENDANCE AT ELITE AND JUNIOR LEVEL INTERNATIONAL EVENTS ANALYSIS

### NCAA Bylaw 13.1.7.15

Coaches may attend Olympic, Pan American, World Championships, World Cup, World University Games (Universiade) or World University Championships competition or the junior level equivalent competition (e.g., Youth Olympic Games, Junior World Championships, U19 World University Games) that occurs outside permissible contact and evaluation periods. Additionally, coaches may attend organized practices associated with the elite or junior level international event provided the practice time has been designated as part of the event by the event organizer.

Coaches' attendance at qualifying competition for such events, including tryouts, remains subject to the applicable recruiting calendars.



\* Subject to any additional attendance restrictions by the operators of the events.  
◊ Coaches may not attend these events during a recruiting shutdown period.

