



*2024 DIVISION I WOMEN'S*  
**SWIMMING  
& DIVING  
CHAMPIONSHIPS**

*ATHENS, GA • University of Georgia, Host*

***PARTICIPANT  
2023-24 MANUAL***

Update

[Table of Contents](#)

Introduction .....	3
Coaches Checklist.....	3
NCAA Committee/Staff .....	4
Host Personnel.....	5
Host Welcome.....	6
Schedule.....	7
Awards .....	8
Championship Operations .....	9
Community Engagement .....	13
Competition Site/Venue Information .....	14
Drug Testing.....	15
Host City Information.....	15
Lodging – Team Hotels.....	16
Media Services .....	16
Medical Information .....	18
NCAA Policies and Requirements .....	21
Participant Expectations and Guidelines .....	23
Spectator Information.....	26
Tickets .....	27
Transportation/Travel.....	28
APPENDIX A – TRAVEL INFORMATION AND ROSTER FORM .....	30
APPENDIX B – WOMEN’S COMPREHENSIVE SCHEDULE (all times local).....	31
APPENDIX C – WOMEN’S SWIMMING PRACTICE/WARM-UP SCHEDULE (all times local) .....	34
APPENDIX D – DIVING PRACTICE/WARM-UP SCHEDULE (all times local) .....	35
APPENDIX E – TEAM LOADING/UNLOADING MAP .....	36
APPENDIX F – DECK LEVEL MAP .....	37
APPENDIX G – CONCOURSE LEVEL MAP .....	38
APPENDIX H – TEAM SEATING CHART .....	39
APPENDIX I – PARKING MAP.....	40
APPENDIX J – EMERGENCY ACTION PLAN .....	41
APPENDIX K – FACILITY SPECIFIC INFORMATION.....	43

APPENDIX L – CLEAR BAG POLICY .....	45
APPENDIX M – ICE TUB FILL TIMES (all times local).....	47
APPENDIX N – UNIVERSITY OF GEORGIA CAMPUS MAP .....	48
APPENDIX O – ATHENS AREA MAP .....	49
APPENDIX P – NCAA EVENTDIRECT INFORMATION.....	50
APPENDIX Q – PARTICIPATION AWARDS .....	52

## Introduction

Congratulations on your selection to the 2024 NCAA Division I Women's Swimming and Diving Championships! This manual includes important information regarding the championships, and is a supplement, not a substitute, for the 2023-24 NCAA Division I Men's and Women's Swimming and Diving Pre-Championships Manual. Additional information is available on the championships website at [NCAA.com](http://NCAA.com) and on [NCAA.org](http://NCAA.org).

The championships will be held at the Jack Bauerle Pool at the Gabrielsen Natatorium, Athens, Georgia, March 20-23, 2024. The University of Georgia will serve as the host institution for the championships.

Detailed information regarding the selection process for swimmers and divers is included in the 2023-24 Pre-Championships Manual, which is available online at [NCAA.org](http://NCAA.org). The qualifying standards for the championships are also available on this page, and all other information pertinent to the championships will continue to be posted on this page.

## Coaches Checklist

- \_\_\_ Contact Short's Travel Management, the NCAA travel service, at 866-655-9215 to make air travel arrangements. Teams located within 400 miles of the competition site are required to travel via ground transportation. If extraordinary circumstances warrant an exception to the established travel policies, you must contact the NCAA's travel department at 317-917-6757 or [travel@ncaa.org](mailto:travel@ncaa.org) for approval prior to making any travel arrangements. All travel policies, including information on travel party numbers, is located on the [NCAA website](http://NCAA website).
  
- \_\_\_ Institutions that are eligible for relay events for the women's championships must declare all relays in which they want to participate by **3 p.m. Eastern time, Wednesday, March 13**. Declarations must be made via the [Relay Declaration Form](#). The new form includes space to name uninvited relay swimmers. Those names can be changed up to registration on site. Send questions or uninvited relay only swimmer changes to John Bugner ([jbugner@ncaa.org](mailto:jbugner@ncaa.org)).
  
- \_\_\_ Complete and submit TRAVEL INFORMATION AND ROSTER FORM to John Bugner ([jbugner@ncaa.org](mailto:jbugner@ncaa.org)) by **Noon Eastern time Sunday, March 17**. ([Appendix A](#))
  
- \_\_\_ Complete nominations for the Elite 90 Award by **5 p.m. (Eastern time) Monday, March 18**. Please click [here](#) to access the nomination form and other pertinent information regarding the award.
  
- \_\_\_ Coaches and/or institutional sports information staff will be provided a pre-made graphic and will be asked to include a photo of senior student-athletes that are part of their team. Please submit the pre-made graphic complete with student-athlete headshots to Jake Stanley, [jstanley@sports.uga.edu](mailto:jstanley@sports.uga.edu) by **March 15**. The photos will be used in the senior recognition presentation at the competition venue Saturday. Any photos sent after these days are subject to exclusion from the recognition.

**NCAA Committee/Staff****NCAA SWIMMING AND DIVING COMMITTEE**

<p>Matt Barany University of Richmond Phone: 804-349-4659 Email: <a href="mailto:mbarany@richmond.edu">mbarany@richmond.edu</a></p>	<p>Hollie Bonewit-Cron, chair Miami University (Ohio) Phone: 513-529-8150 Email: <a href="mailto:hbc@miamioh.edu">hbc@miamioh.edu</a></p>
<p>Charvi Greer Tulane University Phone: 504-862-8448 Email: <a href="mailto:jgreer1@tulane.edu">jgreer1@tulane.edu</a></p>	<p>Lisa Liotta Canisius College Phone: 716-888-2959 Email: <a href="mailto:liottal@canisius.edu">liottal@canisius.edu</a></p>
<p>Ryan Rougeux University of Louisville Phone: 502-210-0306 Email: <a href="mailto:ryanr@GoCards.com">ryanr@GoCards.com</a></p>	<p>Bridgette Cahill America East Conference Phone: 401-965-9684 Email: <a href="mailto:cahill@americaeast.com">cahill@americaeast.com</a></p>
<p>Steve Schaffer Grand Canyon University Phone: 602-403-8774 Email: <a href="mailto:steve.schaffer@gcu.edu">steve.schaffer@gcu.edu</a></p>	<p>Mike Spiegler University of Florida Phone: 352-316-4327 Email: <a href="mailto:mikes@gators.ufl.edu">mikes@gators.ufl.edu</a></p>
<p>Richard Marschner University of Utah Phone: 801-245-0014 Email: <a href="mailto:rmarschner@huntsman.utah.edu">rmarschner@huntsman.utah.edu</a></p>	<p>Jamie Greer Coastal Athletic Association Phone: 443-299-8795 Email: <a href="mailto:jgreer@caasports.com">jgreer@caasports.com</a></p>

**NCAA STAFF**

<p>Paige Newman Assistant Director of Championships (Men's) Phone: 317-778-9808 Email: <a href="mailto:pnewman@ncaa.org">pnewman@ncaa.org</a></p>	<p>John Bugner Director of Championships (Women's) Phone: 317-522-7220 Email: <a href="mailto:jbugner@ncaa.org">jbugner@ncaa.org</a></p>
<p>Antonio Cannavaro Coordinator of Championships (Men's) Phone: 317-917-6956 Email: <a href="mailto:acannavaro@ncaa.org">acannavaro@ncaa.org</a></p>	<p>Linda Godby Assistant Coordinator of Championships (Women's) Phone: 317-917-6507 Email: <a href="mailto:lgodby@ncaa.org">lgodby@ncaa.org</a></p>

**RULES**

<p>Ben Brownlee NCAA Phone: 317-917-6944 Email: <a href="mailto:bbrownlee@ncaa.org">bbrownlee@ncaa.org</a></p>	<p>Greg Lockard Secretary Rules-Editor Phone: 973-486-5501 Email: <a href="mailto:greg@swimdiverules.com">greg@swimdiverules.com</a></p>
--	--

**Host Personnel**

<b>UNIVERSITY OF GEORGIA</b>	
<b>Tournament Manager</b> Christie Purks Cell: 706-540-4913 Email: <a href="mailto:cpurks@uga.edu">cpurks@uga.edu</a>	<b>Assistant Tournament Manager</b> Will Riggan Cell: 540-649-4051 Email: <a href="mailto:wariggan@uga.edu">wariggan@uga.edu</a>
<b>Athletic Training</b> Beth Harness Cell: 407-621-1478 Email: <a href="mailto:elizabeth.harness@uga.edu">elizabeth.harness@uga.edu</a>  Anna Randa Cell: 706-338-0129 Email: <a href="mailto:aranda@sports.uga.edu">aranda@sports.uga.edu</a>	<b>Facility Director</b> Brooke Freudenhammer Cell: 229-220-6679 Email: <a href="mailto:brooke.freudenhammer@uga.edu">brooke.freudenhammer@uga.edu</a>
<b>Marketing Director</b> Zoe Kreyenbuhl Cell: 912-656-3171 Email: <a href="mailto:zoe.kreyenbuhl@uga.edu">zoe.kreyenbuhl@uga.edu</a>	<b>Media Coordinator</b> Jake Stanley Cell: 513-382-9703 Email: <a href="mailto:jstanley@sports.uga.edu">jstanley@sports.uga.edu</a>
<b>Ticket Manager</b> Jack Flood Cell: 770-545-3231 Email: <a href="mailto:jflood28@sports.uga.edu">jflood28@sports.uga.edu</a>	



UNIVERSITY of GEORGIA ATHLETIC ASSOCIATION

January 2, 2024

Dear NCAA Women's Swimming and Diving Championships Participants:

It is my pleasure to welcome you to Athens, Georgia, for the 2024 NCAA Division I Women's Swimming and Diving Championships. The championships will be held at the Jack Bauerle pool in the Gabrielsen Natatorium inside the Ramsey Center, which has been the site of several NCAA championships.

The University of Georgia Athletic Association and Ramsey Center staffs are working hard to prepare for this event. It is our goal to host the finest championship possible. Upon your arrival in Athens, the staff and Athens community will continue to do everything possible to make your visit to Athens an enjoyable one.

If our staff can be of assistance to you, please contact us.

Again, welcome to Athens and the University of Georgia. I look forward to seeing you at the championship in March. Best of luck to you this season.

Sincerely,

Josh Brooks

J. Reid Parker Director of Athletics

## Schedule

The championships will take place March 20-23. For swimming, the preliminary sessions will begin at 10 a.m. and the finals sessions will begin at 6 p.m., Eastern time.

Preliminary rounds for diving for the women's championships will take place at 12:15 p.m. Thursday and Friday and Noon Saturday. Diving finals will take place in the appropriate order during the evening finals session. A comprehensive schedule is included in [Appendix B](#).

### Pool Availability

The Jack Bauerle Pool at the Gabrielsen Natatorium will be available for participating student-athletes during the hours listed below. Only student-athletes from competing institutions may use the pool during these times. **There is no warm-up allowed in the diving well.**

<b>Monday</b>	4 p.m. to 8 p.m.
<b>Tuesday</b>	8 a.m. to 9 p.m.
<b>Wednesday</b>	8 a.m. to 10 p.m.
<b>Thursday</b>	6 a.m. to one hour after the conclusion of finals
<b>Friday</b>	6 a.m. to one hour after the conclusion of finals
<b>Saturday</b>	6 a.m. to conclusion of awards ceremony

The Gabrielsen Natatorium **will not** be available to competing teams **prior to 4 p.m. Monday**.

### Registration/Package Pick-up

Registration will take place at the participant entrance (see map, [Appendix E](#)). Registration hours are as follows:

<b>Monday</b>	4 p.m. to 8 p.m.
<b>Tuesday</b>	8 a.m. to 5 p.m.
<b>Wednesday</b>	8 a.m. to 5 p.m.

**Massage therapists should arrive at the venue NO EARLIER THAN Tuesday, March 19 at 8 a.m. to be assigned a spot according to the massage table selection procedures (See [Medical Information](#) section for more information). All tables will be placed in the volleyball arena adjacent to the competition venue ([Appendix G](#)).**

After Wednesday, any late registrations will take place at the participant entrance. A representative from each participating institution must register their team and pick up the team packet. The following will take place at registration:

- Pick up team packets, which will contain credentials and parking information;
- Review and sign the team entry list, confirming that all student-athletes on the list are present and eligible to compete;
- Declare any uninvited swimmers that may serve as a relay alternate during the meet (up to four);
- Pick-up participant medallions for student-athletes who were selected to the championships;
- Pick-up PowerAde squeeze bottles for student-athletes; and
- Pick-up student-athlete participation awards and towels.

### Practice/Warm-Up Schedule - Swimming

The pool will be available for practice as noted previously. On competition days, there will be one pace and one sprint lane designated in the warm-up pool. Practice and warm-up schedules for the competition



pool are included in [Appendix C](#). The administrative referee will determine what lanes may be used for warmups during diving.

### **Practice/Warm-up Schedule – Diving**

A dry land area with mats for stretching and warm up will be available in the volleyball arena, adjacent to the competition venue.

The diving practice and competition schedule is in [Appendix D](#).

### **Administrative Meeting**

A **mandatory** administrative meeting will be held **Wednesday, March 20**, for all coaches. The swimming coaches meeting will be held at 11:30 a.m., followed by the diving coaches meeting at 1 p.m. All meetings will be conducted **virtually**. All head coaches or their institutional designee are required to attend to hear important information specific to the championships and the facility. **Institutions failing to have representation at the meeting will be fined.**

### **CSCAA Meetings**

The College Swimming and Diving Coaches Association of America will host a pre-championship virtual meeting for all Division I coaches **Monday, March 11, 2023, at 1 p.m. Eastern time**. Coaches will be provided with the registration link in a separate email from the CSCAA.

### **National Anthem**

The national anthem will be performed prior to the start of the evening session each day.

### **Timed Finals Events**

**ALL RELAYS** will be timed finals and will take place during the evening finals session each night. Swimmers will parade for all relays.

The season's best competitive time for the 1,650-yard freestyle shall be used to seed that event. The eight fastest competitors will swim in the evening finals session at 6 p.m. Saturday. This heat will parade to the starting blocks. All other heats will be swum slowest to fastest, beginning at approximately **3:45 p.m. and ending at approximately 5:15 p.m.** These heats will not parade. **Please note the competition pool will not be made available for warm-up for the evening session until 5:15 p.m.**

## **Awards**

### **Awards Ceremony**

An awards ceremony will be held immediately after the conclusion of each event and NCAA awards will be presented to the top eight finishers in each event. Team awards will be presented to the top **THREE** teams after the presentation of the 400-yard freestyle relay awards.

Student-athletes are required to wear official school uniforms/warm-ups for awards ceremonies. All individuals receiving an award must be represented on the awards stand.

**If a student-athlete is swimming in the event immediately after the awards ceremony, and only in that circumstance, another participating student-athlete from that institution MAY stand in to receive the award, unless a record has been broken.**

**If an individual is swimming in multiple events that session, the coach must inform the committee and NCAA staff prior to the start of that session if that student-athlete may/will have a substitute for any of the award ceremonies. Failure to adhere to this policy will be reviewed as a potential misconduct.**

Swimmers' baskets will be taken to the awards staging area during the race. Divers must change into warm-ups and walk immediately to the awards stand at the conclusion of the diving finals events. Please see the venue map in [Appendix F](#) for the location of the awards staging area and the awards stand.

If a tie occurs in the finals, it will not be broken. ***The place trophy will be given to the oldest individual by birthday.*** The other individual will get the other trophy for purposes of the awards photograph. A duplicate award will be ordered by the NCAA and sent to the institution after the championships. Institutions interested in purchasing additional awards that they receive on site can do so at <https://services.mtmrecognition.com/ncaa/>.

### **Elite 90 Award**

The NCAA Elite 90 Award will be presented to the student-athlete with the highest cumulative grade-point average competing at the championships. The coach of the recipient will be notified in advance but will be asked NOT to notify the student-athlete. A day/time for presenting the award will be determined at that time, based on the events in which the student-athlete is participating. Coaches must submit nominees for the Elite 90 award by **5 p.m. (Eastern time) Monday, March 18**. Please visit the [NCAA website](#) to access the nomination form and other pertinent information regarding the award.

### **Locker Room Program**

The national championship team will receive champion t-shirts and hats as part of the NCAA locker room program. These items will be presented at the team awards ceremony after the final event.

### **Participant Medallions**

Participant medallions will be provided to all student-athletes selected to the championships. **Medallions will NOT be given to uninvited relay swimmers.** Medallions will be given to the institutional representative at registration. Institutions interested in purchasing participant medallions can do so at the following website: <https://services.mtmrecognition.com/ncaa/>. Additional medallions will NOT be provided at registration.

### **Student-Athlete Participation Awards**

Participation awards will be distributed onsite at the finals location for all members of the official NCAA travel party. Participation awards are not provided for institutionally funded divers or uninvited relay swimmers. See [Appendix Q](#) for more details, including ordering instructions for additional participation awards.

## **Championship Operations**

### **Banners**

The only banners allowed in or around the competition area are those approved by the swimming and diving committee and the NCAA. Banners advertising equipment of manufacturers are strictly prohibited.

**NEW for 2024:** Team-provided banners **may not** be hung or displayed at the championships. The NCAA will incorporate participating team logos into the championship décor at the competition venue. **Any banners hung by the teams or spectators will be removed.**

### **Deck Passes/Credentials**

Deck passes/credentials will be produced by the NCAA for all participating teams and will be distributed to teams at registration.

Team staff will receive numbered wristbands and student-athletes will receive labeled credentials. No one will be allowed to enter the facility or access the pool deck without proper identification. Wristbands should be worn on the wrist at all times on deck and in the facility.

Teams will receive deck passes for selected student-athletes and a designated number of institutional personnel (see chart below). Eligible institutions will be allowed to bring up to four uninvited relay swimmers to the championships, not to exceed the maximum of 18 student-athletes. Uninvited relay swimmers must be designated at registration and will receive credentials.

The number of deck passes for institutional personnel is based on the total number of student-athletes attending from their institution – including selected swimmers and divers, uninvited relay swimmers and institutionally funded divers. NOTE: An institution’s maximum limit of 18 total student-athletes must be maintained.

<b>Number of Selected Student-Athletes</b>	<b>Number of Deck Passes for Institutional Personnel</b>
1-4 participants	Four
5-9 participants	Five
10-14 participants	Six
15 or more participants	Seven

One additional deck pass will be allocated for the diving coach from each institution with qualified divers. A second credential may be issued for an additional diving coach *if all other passes have been exhausted*. Two credentials will be issued for **diving only** programs.

Teams can request up to one medical credential for a certified athletic trainer through the host athletic trainer. Any other athletic trainers must be accommodated through the deck pass allotment noted above. **Massage therapists must be included in the institutional allotment noted in the chart above.** Coaches/institutional personnel outside of the allotted number must pay the regular admission fee and will not be allowed on deck. There are no exceptions to this policy.

Institutional personnel who receive deck passes through the allotment may purchase a replacement deck pass if one is misplaced. The replacement deck pass will cost the same as an all-session ticket (\$130). Replacement deck passes can be purchased prior to each session (from two hours prior to the session until 30 minutes prior) at the team registration area, located at the participant entrance.

Misuse of credentials by an institution may result in a misconduct.

Media credential requests, including sports information directors for participating institutions, must be made online at [www.ncaa.com/media](http://www.ncaa.com/media).

### **EventDirect**

The NCAA EventDirect application will be used at the **final site** of this NCAA championship. This application will be used as the primary communication and organizational tool, allowing for direct communication to participating institutional staff via text and email, as well as access to important files and other information all directly through the NCAA EventDirect web-based App. If you have not done so, participating institutional staff must download and register through the web-based App. for their specific championship event to access the necessary championship information and receive important updates in the lead up to and during this championship.

Please be sure to reference the directions in [Appendix P](#) on how to install and/or register on your mobile device, through the EventDirect web-based App., to get set-up and be confirmed as a user within the NCAA EventDirect application for this championship. If you have previously used EventDirect, please reference the “Returning” user instructions. If you are a new EventDirect user, please reference the “New” user instructions.

We highly recommend that you share this with your additional staff (assistant coaches, sport administrators, directors of operations, etc.) and encourage them to register using their institutional email address in order to receive important communication in the lead up to and during the championships.

### **Heat Sheets**

Coach heat sheets will be available on the pool deck at the head table. Heat sheets for the following day will be finalized and distributed by email and placed at the head table after the scratch deadline each day.

### **Hospitality**

Snacks, water and Powerade products will be available for competitions in the Student-Athlete Hospitality Room and on the pool deck, adjacent to the warm-up pool. Please refer to the map in [Appendix F](#).

Hospitality for institutional personnel, officials, meet management personnel and coaches will be available Wednesday, Thursday, Friday and Saturday. The hospitality area is located inside the volleyball arena on the second floor of the Ramsey Center (see map, [Appendix G](#)). NCAA guests, with hospitality passes, may access the hospitality area.

Breakfast (Thursday through Saturday) will be available beginning at 7:30 a.m. and ending at 9:30 a.m. Lunch (Thursday through Saturday) will be provided between 11 a.m. and 1:30 p.m. Dinner (Wednesday through Saturday) will be served between the hours of 4:30 p.m. and 8 p.m. Coffee, drinks and snacks will be available from 7:30 a.m. to 10 p.m. Wednesday through Saturday. **Individuals must have a credential for access to the hospitality areas.**

### **Merchandise**

Official NCAA championship merchandise will be available for purchase at the championships. Participants will also be given the opportunity to pre-order apparel through Event 1, Inc., the official souvenir merchandiser for the NCAA. Participants may also order merchandise at the following link: <https://www.event1teamstore.com>.

Merchandise will be available for purchase from 9 a.m. to 2 p.m. and 4:45 p.m. to 7p.m. on Thursday through Saturday and from 4:45 p.m. to 7 p.m. on Wednesday. The merchandise stand is located in the spectator lobby of the Ramsey Center (see map, [Appendix G](#)).

### **Music**

**No individual speakers** will be allowed on the pool deck – either during practices or competition. House music will be provided during practices.

### **Relays**

**ALL RELAYS** will be timed finals and will take place during the evening finals session each night.

### **Results**

Results from each session will be distributed via the head table. Results will also be available on Meet Mobile and [www.ncaa.com](http://www.ncaa.com).

### **Swim-Offs**

Per rule 5-8-3, If a tie occurs during preliminary heats, ties may be decided by a method other than a swim-off, such as a coin toss, if agreed upon by both coaches in consultation with the athlete(s). If there is no agreement, a swim-off will be held.

Swim-offs may be held at a mutually agreed-upon time by the teams involved. If a mutual time cannot be agreed upon, the meet referee will have the authority to set a time, which may be no sooner than 30 minutes after the last event of that session. Swim-offs will NOT be conducted before Finals. Please check with the meet referee before leaving the venue following prelims if you have a student-athlete that could possibly be affected by a swim-off.

### **Team Seating**

On **Monday and Tuesday**, the top 15 teams from the previous year will be given their choice of location, in order of finish during practice. Coaches must be prepared to make their selection when approached or called by the NCAA committee.

At the conclusion of that process, on **Tuesday and Wednesday**, coaches from teams 16 through the last scoring team from the previous year's championship in attendance will select their team seating in order of finish from the previous year. Coaches must be prepared to make their selection when approached or called by the NCAA committee.

The remaining teams that did not score or did not participate in the previous year's championship will be ordered by the number of student-athletes entered in the meet. Those entering the same number of student-athletes shall be ordered alphabetically within that group. Once the order has been established, teams shall select from the remaining seating locations. Refer to [Appendix H](#) for a map of the on-deck seating. **NOTE:** Diving only programs will not be part of the team seating process.

The top 15 teams from the 2023 championship are as follows:

<b>WOMEN</b>	
1.	Virginia
2.	Texas
3.	Stanford
4.	Louisville
5.	North Carolina State
6.	Ohio State
7.	Indiana
8.	Tennessee
9.	Florida
10.	North Carolina
11.	California
12.	Southern California
13.	LSU
14.	Alabama
15.	Wisconsin

### **Team Video**

Due to space limitations in the Gabrielsen Natatorium, there will be **NO** team video space provided. Sideline Scout will film all heats and provide links to coaches after each session. Specific details will be reviewed during the coaches meeting.

### Video Review

Per rule 4-14-7, video review will be used at the championships to determine if relay takeoff disqualifications are accurate. All reviews must be conducted before qualifiers/results are announced. Such equipment shall be used if both relay judges independently record opposite of the equipment or anytime the electronic equipment reading is a negative number that leads to disqualification. The designated official shall review the video to determine if clear video evidence exists to overturn the call. The referee has sole jurisdiction over the review and their decision is a judgment call not subject to further review or appeal. **Challenges by coaches are not permitted as part of this rule.** The video shall not be used to detect any other rule infractions. If conclusive video evidence exists to overturn the call, the result of the relay takeoff equipment is voided, no electronic result is recorded, and the referee may overturn the disqualification for that heat. Any obstruction to the view of the exchange is sufficient to void the video from evidence. All video reviews will take place after the heats of the event are completed.

### Video Review – 15-Meter Violation

Per Rule 4 Section 10, video review will be used at the championships to determine if an official's call of a 15-meter violation is accurate. All video reviews will take place after the heats of the event are completed and must be conducted before qualifiers/results are announced. All 15-meter violation disqualifications will be reviewed to evaluate if the 15-meter violation should be upheld. Only the referee and the designated officials may view the video that is being used for review. The referee shall review the video to determine if clear video evidence exists to overturn the call. The referee has sole jurisdiction over the review and their decision is a judgment call not subject to further review or appeal.

**Challenges by coaches are not permitted as part of this rule, and coaches are not permitted to view the video being used at any time.** The meet committee (in consultation with the meet referee) will confirm that the video equipment is in place, before the respective event, and it is aligned with a direct side view(s) of the 15-meter mark. It is important to note that the result of the video review is merely to determine if the infraction is confirmed. The video will not be used to detect any other rule infractions. If conclusive video evidence exists that the swimmer did not cross the 15-meter mark, the referee may overturn the disqualification. Any obstruction to the view of the 15-meter mark is sufficient to void the video from evidence.

### Water/PowerAde for Participants

Water and PowerAde product will be available for student-athletes during practice and competition. Teams will receive PowerAde squeeze bottles for the student-athletes. Squeeze bottles will be distributed at registration. Equipment carrying any branding other than PowerAde will not be permitted on deck during the championships and all product must be consumed out of the NCAA-provided PowerAde-branded water cups or squeeze bottles only.

### **Community Engagement**

Participating student-athletes for the 2024 NCAA Division I Women's Swimming and Diving Championships are encouraged to join the host in a book drive for the Athens Area Boys and Girls Club and the Athens-Clarke County School System. Please consider bringing NEW/UNUSED books to the championship.

Students were recently surveyed on their book preferences and interests and to assist in this community service opportunity. In general, the most popular topics for reading are sports, princesses/fairies, fantasy, animals, scary, and mystery. The students showed strong interest in graphic novels, which are longer comic books. Any picture books, early chapter books, and some middle grades novels are all appropriate.

At team registration, each team will be given large labels to place on the inside cover of the books, which will illustrate to the school/club which team donated the book. Teams are encouraged to be creative with the labels. NEW/UNUSED books can be dropped off throughout the championship in the hallway by the participant entrance.

A Mystery Reader Event will be conducted on Tuesday, March 19 at local Athens-Clarke County Schools with student-athletes from the University of Georgia Swimming and Diving Team. Any student-athletes in Athens, Georgia, for the NCAA Championship are welcome to participate.

## **Competition Site/Venue Information**

### **Competition Site Maps**

A map of the venue is available in [Appendix F](#) and [Appendix G](#) and outlines all areas on the main pool deck as well as the second seating levels.

### **Emergency Evacuation Plan**

The Ramsey Center/Gabrielsen Natatorium Emergency Evacuation Plan is provided in [Appendix J](#). This plan will also be provided in the team packets at registration and reviewed at the coaches meeting prior to the meet.

### **Facility Regulations – Prohibited Items**

- Artificial noisemakers/noise irritants.
- Non-collapsible strollers are not permitted.
- Tripods and other equipment that could pose a tripping hazard are not permitted.
- Consideration will be provided to teams regarding bringing food inside the venue if needed for participants; however, the venue will limit outside food for spectators. NOTE: That a search of all bags will occur at the ticket entrance to the facility.
- Any bags/items brought into the building are subject to inspection and the building policy. As a rule, bags size 16x16 are acceptable. Other bags may be refused entry. Refer to [Appendix L](#) for the clear bag policy that will be implemented at the Ramsey Center.
- No weapons or any kind will be allowed in the building. Firearms, knives, chains, lasers, or any other items that may be considered harmful will not be allowed inside.
- Pets (except for service animals).
- Hoverboards.
- Tobacco products.
- Alcoholic beverages.
- Glass containers.
- Laser pointers.
- Strobe lights.
- Any other items deemed dangerous or inappropriate by security or game management.

Additionally, smoking (including e-cigs) is strictly prohibited on campus.

### **Locker Rooms / Changing Stations**

The Gabrielsen Natatorium has locker rooms dedicated to the users of the competition pool located off the pool deck. Single-use, gender-neutral restrooms and male coach restrooms are available off the pool deck. Additional restrooms are available on the second level of the facility. See the venue map in [Appendix F](#) and [Appendix G](#).

Participating teams will not have assigned lockers, and all participants will be responsible for their personal items. Team bags can be placed on or under team bleachers on the pool deck. Please remove items from the bleachers each day, in order to clean the deck nightly.

The NCAA and the University of Georgia are not responsible for lost or stolen items.

### **Participant Entrance**

Participants will enter through the back hallways on the lower level of the facility or through the spectator entrance of the Ramsey Center. Credentials can be obtained at the team registration tables within the participant entrance (see map, [Appendix E](#)).

### **Towels**

Towel service will not be provided during the championships for coaches or student-athletes.

### **Drug Testing**

All student-athletes are subject to NCAA drug testing at all NCAA championships or in conjunction with all postseason certified events. The goal of the drug-testing program is to provide safe, fair and equitable competition as well as to protect the health and safety of all NCAA student-athletes participating in NCAA championships and postseason certified events.

The drug-testing program involves collecting urine specimens from student-athletes at various times throughout an NCAA championship. Student-athletes may be selected for drug testing based on their place of finish, position and/or an approved random selection method. A student-athlete may be selected for drug testing on more than one occasion during the championship event. All urine specimens provided by student-athletes are analyzed by a World Anti-Doping Agency accredited laboratory and the results are then reported to the institution's director of athletics.

The WADA laboratory analyzes each urine specimen for substances and related compounds from a list of banned-drug classes developed by the NCAA Executive Committee. Refer to the 2023-24 Drug-Testing Programs booklet on the [NCAA website](#) for the procedural guidelines for testing. Also review the published list of [banned drug classes](#). Athletic administrators are urged to review the NCAA Drug Education and Testing video, the NCAA Banned Drug Classes List as well as the NCAA Drug-Testing Program booklet with all coaches and student-athletes in advance of any NCAA championship or postseason certified event. Student-athletes who test positive as a result of a drug test administered by the NCAA or who breach the NCAA drug-testing program protocol shall lose one year of eligibility and shall be charged with the loss of a minimum of one season of competition in all sports.

***Please note, if NCAA drug testing does not occur during a championship round and/or a drug test is required outside of the standard championship protocol (e.g., national record, world junior record, etc.), the cost associated with such a drug test will be the responsibility of the tested student-athlete's institution.***

Additional information regarding the NCAA's championship drug-testing program is located on the [NCAA website](#).

### **Host City Information**

[www.visitathensga.com](http://www.visitathensga.com) – Accommodations, maps, dining, shopping, places of interest, and more.



## **Lodging – Team Hotels**

Due to other events in the city, teams are encouraged to reserve hotel rooms immediately. Multiple properties at various price ranges have been identified and are currently holding rooms for the event. A complete listing of the properties, rates and contact information is located on the [Division I swimming and diving landing page](#).

## **Media Services**

Important information regarding NCAA media policies is located online at [www.ncaa.com/media](http://www.ncaa.com/media).

### **Championships Coverage**

**NOTE:** ESPN+ will provide digital coverage for the women’s championship week for the morning prelims and evening finals sessions Wednesday through Saturday. Tape-delayed coverage of the women’s championships will be on ESPNU at 7 p.m. Eastern, March 27.

### **Championship Websites**

The official website for the women’s championships is <http://www.ncaa.com/championships/swimming-women/d1>. Additional information specific to participants is located on [NCAA.org](http://NCAA.org).

The championship microsite is located here: <https://georgiadogs.com/feature/ncaa-swim2024>

### **Footage Usage and Licensing**

For more information, go to [Broadcast Services | NCAA.com](#).

### **Credentials - Media Representatives**

Media representatives will be admitted to the championships in accordance with established NCAA policies and procedures. All media credential requests, including requests for institutional sports information and creative personnel, must be submitted online at [www.ncaa.com/media](http://www.ncaa.com/media).

### **Media Credentials Pickup**

Credentials can be picked up beginning at 2 p.m. Wednesday, March 20. For all other days of the championship, credential pickup will open when gates open prior to each session (9 a.m. and 4:45 p.m.). Credential pickup will be located at the spectator entrance to the Ramsey Center.

### **Media Hospitality**

Hospitality will be available to media throughout the Championships. Hospitality will be served in the media workroom.

Lunch (Thursday through Saturday) will be provided between 11 a.m. and 1:30 p.m. Dinner (Wednesday through Saturday) will be served between the hours of 4:30 p.m. and 8 p.m. Coffee, drinks and snacks will be available from 8 a.m. to 10 p.m. Wednesday through Saturday.

### **Media Workroom and Seating**

During the championships, the media headquarters will be in the volleyball arena (refer to [Appendix G](#)). This work area will be equipped with hardline Ethernet connections and wireless access. Snacks and beverages will be available in this room during each session. Seating for media will be located inside the Gabrielsen Natatorium in Sections E and H. Complimentary wireless internet access will be provided, and several high-speed Ethernet connections will be made available for photographers.

**NOTE:** There will be no access to the pool deck for media.

### **Interview Procedures**

ESPN may conduct interviews with each event champion prior to the awards ceremony. The interviews will be conducted on the pool deck near Lane 1, closest to the awards area.

Post-race interviews will take place in the squash courts on deck level located outside the natatorium near the warm-up cool-down pool. (refer to [Appendix F](#)). Champions of each individual event and relay are required to participate in a press conference shortly after the conclusion of their event – following awards podium and optional warm-down swim. If a champion has another race to participate in the same evening, they are not obligated to participate in the press conference until after their final race of the evening.

The head coach and one to three (1-3) student-athletes from the winning team are required to participate in a press conference following the conclusion of the championships on Saturday evening.

Any other media requests will be coordinated by each institution's SID or team representative.

### **Parking**

Credentialed media will be provided parking in East Campus Parking Deck.

### **Photo Locations**

Photographers and videographers may shoot from the following locations:

- On the side of the pool opposite the spectator seating, photographers/videographers may shoot from the starting blocks to the backstroke flags on the start end of the pool and from the backstroke flags to the turn on the turn end of the pool.
- On the side of the pool with the spectator seating, photographers/videographers may shoot from the backstroke flags to the turn on the turn end of the pool.
- Photographers/videographers are permitted on the second bulkhead at the turn end of the pool.
- Photographers/videographer will not be permitted on the end of the pool where the starting blocks are located, except after starts of the breaststroke.
- For diving, photographers/videographers will not be permitted behind (on the stairs side) of any boards that are in use.
- Please remember, space for photographers/videographers is **EXTREMELY LIMITED!** NCAA Photos and ESPN broadcast cameras will always have priority over any other photographers/videographers. If locations are crowded, please be courteous to other photographers/videographers. Specifically, if members of your team are not swimming in a particular event, please yield space to photographers/videographers from a team who does have participants in that event if necessary.

### **Pool Deck Access**

To access the pool deck, an individual with a PHOTO credential must have their credential AND a photo or video armband. General members of the media are not allowed on the pool deck.

Armbands will be provided to credentialed media photographers, credentialed team photographers (one per school) and credentialed team videographers (one per school).

### **Programs**

LEARFIELD is partnering with the NCAA to produce digital game programs for NCAA Championships. The Division I Women's Swimming and Diving program can be viewed at [NCAA.com/gameprograms](http://NCAA.com/gameprograms). The program is free to view and can be downloaded and printed. Using a digital platform will allow LEARFIELD to add extra pages to program in addition to extending deadlines to allow for the most up-to-date

information to be included in the program. In addition, after the championship has concluded, the program will be updated with a recap and a new cover photo from the recently completed championship.

### **Publicity**

Participating institutions are asked to send press guides and other pertinent publicity and promotional materials to the following:

#### **Jake Stanley**

NCAA Swimming and Diving Media Notes  
1 Selig Circle  
Athens, GA 30602  
[jstanley@sports.uga.edu](mailto:jstanley@sports.uga.edu)

### **Results**

Results will be emailed to all coaches and SIDs after each session. In addition, hard copies will be available in the media headquarters and near the head table on the pool deck. Live results will be available at Meet Mobile and [www.ncaa.com](http://www.ncaa.com).

### **Senior Recognition Photos**

Coaches and/or institutional sports information staff will be provided a pre-made graphic and will be asked to include a photo of senior student-athletes that are part of their team. Please submit the pre-made graphic complete with student-athlete headshots to Jake Stanley, [jstanley@sports.uga.edu](mailto:jstanley@sports.uga.edu) by March 15. The photos will be used in the senior recognition presentation at the competition venue Saturday.

### **Medical Information**

All medical care will be coordinated through the Georgia Athletic Training staff.

### **Sports Medicine Staff**

<b>Anna Randa</b> Associate Athletic Director, Sports Medicine Cell: 706-338-0129 Email: <a href="mailto:aranda@sports.uga.edu">aranda@sports.uga.edu</a>	<b>Beth Harness</b> Associate Athletic Trainer Cell: 407-621-1478 Email: <a href="mailto:elizabeth.harness@uga.edu">elizabeth.harness@uga.edu</a>
--	--

### **Staff on Duty**

- At least two certified athletic trainers will be present during all practice and competition times.
- Lifeguards are on duty at all times the Gabrielsen Natatorium is open. Coverage includes both the competition and warm-up pools and the diving well.
- An EMT and paramedic are also on-site for the posted open hours for the competition. Their station is located near the dive well on the spectator seating side of the venue.
- Team physician will be on deck during event finals each night.

### **Sick Call**

Georgia Athletics will conduct a "sick call" from 6 to 7:30 a.m. Wednesday through Saturday in the Athletic Training Room. After 8 a.m., Wednesday through Friday, the University Health Center, located across the street from the Gabrielsen Natatorium, is available should adjunct medical care be required such as laboratory or pharmacy services.

### **Traveling Without Sports Medicine Staff**

If your team is traveling without a certified athletic trainer, advanced notification is appreciated. Written prescriptions from physicians and/or certified athletic trainers are required for any treatment outside of ice and heat in such situations. In addition, Georgia's Sports Medicine personnel is available to assist with any taping and wrapping needs, provided that student-athletes provide their own taping supplies.

### **Sports Medicine / Athletic Training Room Facilities**

Athletic training room facilities are available at the Gabrielsen Natatorium in the athletic training room on the pool deck next to the lifeguard office and adjacent to the warm-up pool (see map, [Appendix F](#)). Access will be available the entire time the facility is open. Specific requests should be made through Beth Harness. The room contains five treatment tables, three modality units, hydrocollator, ice machine, stretching area, first aid supplies, biohazard disposal and emergency equipment.

The athletic training room connects to a wet room housing eight to 10 cold tubs to be shared by all teams. Ice tubs will be monitored and maintained by the Georgia Athletic Training staff. A detailed schedule of ice tub fill times is included in [Appendix M](#). **Due to limited space, set up of individual team ice baths will not be permitted.**

Emergency equipment, including AED, trauma kit, and splint bag are maintained in the athletic training room. AED and spine board are also maintained in the lifeguard office next to the athletic training room.

### **Other Medical Facilities**

The Georgia Athletics' sports medicine physicians will be on call throughout the entirety of the week. Beth Harness has quick access to them throughout the day Monday through Saturday, should a need arise.

- **University Health Center** (located across the street from Gabrielsen Natatorium)
  - *Purpose*: General medical, allergy, dental, vision, women's health.
  - *Hours*: Monday through Friday 8 a.m. to Noon and 1 p.m. to 5 p.m.
  - *Address*: 55 Carlton Street, Athens, GA 30602
  - *Phone*: 706-542-1162
  
- **Piedmont Athens Regional Medical Center**
  - *Purpose*: Emergency, urgent care after hours, ambulance transport location.
  - *Address*: 1199 Prince Avenue, Athens, GA 30606
  - *Phone*: 706-475-7000
  
- **Piedmont Urgent Care Athens**
  - *Purpose*: Non-emergency illness/injury.
  - *Hours*: Sunday through Saturday 8 a.m. to 8 p.m.
  - *Address*: 1305 Jennings Mill Road, Suite 120, Watkinsville, 30677
  - *Phone*: 706-410-2005
  
- **EMS**
  - *Phone*: 911
  
- **University of Georgia Police**
  - *Phone*: 706-542-2200

### Local Pharmaceutical Facilities

**\*\*NOTE: Athens and surrounding areas DO NOT have a 24-hour pharmacy\*\***

- **University Health Center Pharmacy** (located across the street from Gabrielsen Natatorium)
  - Hours: Monday through Friday 8 a.m. to 6 p.m.
  - Address: 55 Carlton Street, Athens, GA 30602
  - Phone: 706-542-9979
  
- **Piedmont Athens Regional Medical Center Pharmacy**
  - Hours: Monday through Friday 9 a.m. to 8 p.m.; Saturday and Sunday 10 a.m. to 6 p.m.
  - Address: Prince Tower 1<sup>st</sup> Floor, 1199 Prince Avenue, Athens, GA 30606
  - Phone: 706-475-1920
  
- **Kroger Pharmacy**
  - Hours: Monday through Friday 8 a.m. to 8 p.m.; Saturday 9 a.m. to 6 p.m.; Sunday 11 a.m. to 5 p.m.
  - Address: 191 Alps Road, Athens, GA 30606
  - Phone: 706-543-3553

### Massage Area

All massage tables will be located in the volleyball arena on the second floor of the Ramsey Center, adjacent to the Gabrielsen Natatorium ([Appendix G](#)).

Massage therapists will select their spot in order based on the team's place finish from the previous year's championship. The remaining teams that did not score or did not participate in the previous year's championship will be ordered by the number of student-athletes entered in the meet. Those entering the same number of student-athletes shall be ordered alphabetically within that group.

Teams will be allowed to place multiple tables adjacent to each other as they arrive. If spots fill up in the main area before all teams arrive, any teams with more than two spots already taken will be asked to remove or move one of their tables. If there are no teams with more than two tables, the last team with two tables to choose their spot will be asked to remove or move the second table. This will ensure that all teams have at least one spot in the main area.

**Massage therapists should arrive at the venue NO EARLIER THAN Tuesday, March 19 at 8 a.m. to select a location. Those who are not present at that time will be skipped and select at the end. Please keep in mind that ALL massage therapists should be included on your TRAVEL INFORMATION AND ROSTER FORM, even if you contract with one locally.**

### Concussion Management

The NCAA has adopted legislation that requires all active member institutions to have a concussion management plan for their student-athletes. Participating institutions shall follow their concussion management plan while participating in NCAA championships. If a participating team lacks appropriate medical staff to activate its concussion management plan, the host championship concussion management plan will be activated.

The legislation notes, in part, that a student-athlete who exhibits signs, symptoms or behaviors consistent with a concussion shall be removed from athletics activities (e.g., competition, practice, conditioning sessions) and evaluated by a medical staff member (e.g., sports medicine staff, team physician) with experience in the evaluation and management of concussions; a student-athlete diagnosed with a

concussion is precluded from returning to athletics activity for at least the remainder of that calendar day; and medical clearance for return to athletics activity shall be determined by the team physician or the physician's designee from the student-athlete's institution. In the absence of a team physician or their designee, the NCAA tournament physician will examine the student-athlete and will determine medical clearance.

A concussion is a brain injury that may be caused by a blow to the head, face, neck or elsewhere on the body with an "impulsive" force transmitted to the head. Concussions can occur without loss of consciousness or other obvious signs. A repeat concussion that occurs before the brain recovers from the previous one (hours, days or weeks) can slow recovery or increase the likelihood of having long-term problems. In rare cases, repeat concussions can result in brain swelling, permanent brain damage and even death.

For further details please refer to the "NCAA Sports Medicine Handbook Guideline on Concussions" online at [www.NCAA.org/health-safety](http://www.NCAA.org/health-safety).

### **Gabrielsen Natatorium Emergency Action Plan**

The emergency action plan is located in [Appendix J](#).

#### **First Aid Kits**

- Lifeguard Room
- Athletic Training Room

#### **Public Access AEDs**

- Lifeguard Room
- Athletic Training Room

### **Emergency Medical Service**

EMS will be on site for practice and competition. Certified athletic trainer, athletic training student(s), and lifeguards on site for practice and competition. Additional sports medicine staff may be accessible from the University Health Center Sports Medicine Department, which is located across the street from the Ramsey Center.

### **Non-Student Athlete Medical Issues on Deck:**

Will be managed by the Ramsey Center lifeguard staff and/or the Championship medical staff.

### **Spectator Medical Issues:**

Spectators in the stands should contact the nearest Event Staff worker or Event Security personnel for assistance. EMS or Championship medical staff may provide necessary care.

## **NCAA Policies and Requirements**

### **Certification of Eligibility/Availability**

Only student-athletes eligible under NCAA Bylaws 12, 13, 14, 15 and 16 may compete in NCAA championships. In accordance with Bylaw 3.2.4, member institutions are required to certify the eligibility of their student-athletes before the beginning of each academic year and to withhold ineligible student-athletes from all intercollegiate competition. Institutions are responsible for monitoring/determining the eligibility of student-athletes at the start of each semester/quarter. Member institutions are reminded to notify the NCAA national office before the selection date for each championship of any student-athlete who may have participated in regular-season competition but subsequently is determined to be ineligible or unavailable for NCAA championships competition.

It is critical for coaches to immediately inform the NCAA championship manager, John Bugner ([jbugner@ncaa.org](mailto:jbugner@ncaa.org); 317-522-7220), of student-athletes who have become unavailable to compete, since another student-athlete could lose the opportunity to participate in the championships if this information is not received. This applies to student-athletes who have been selected to the championships and become ineligible.

### **Ethical Behavior by Coaches**

As a member of the coaching profession, coaches have inherent obligations and responsibilities to the profession, to the student-athletes, and to all those with whom they come into contact. Coaches are expected to be role models and to conduct themselves with integrity and high ethical standards at all times. In order to fulfill these responsibilities, a coach must do the following:

1. Per NCAA Bylaws, conduct all intercollegiate competition in accordance with the playing rules of the Association;
2. Place the safety and welfare of others ahead of winning and personal prestige;
3. Treat all people with honesty, fairness and respect. (In particular, such things as vulgar and profane language or taunting, intimidating or baiting opponents or the media, are not acceptable from a coach or a student-athlete.);
4. Teach and model for student-athletes and staff members strict adherence to the rules and regulations of the sport and its governing bodies; and
5. Recognize, accept and teach to the team and the staff that their public behavior projects an image of the program and the university or college they represent. Therefore, behavior should be appropriate and honorable at all times.

### **Misconduct/Code of Conduct**

Misconduct is defined as **“any act of dishonesty, unsportsmanlike conduct, unprofessional behavior or breach of law, occurring from the time the championship field is announced through the end of the championship that discredits the event or intercollegiate athletics.”**

Public criticism of officials may subject the individual, institution or conference to the misconduct provisions.

The games committee is authorized to (1) reprimand publicly or privately, (2) disqualify from future participation and/or (3) ban from subsequent competition a student-athlete or representative of the institution who is guilty of misconduct at any time during the championship.

### **Sports Wagering**

The NCAA defines sports wagering as putting something at risk – such as an entry fee or a wager – with the opportunity to win something in return. The NCAA opposes all forms of legal and illegal sports wagering on college sports. Student-athletes and athletics administrators cannot place a sports wager for any NCAA-sanctioned sport. This includes wagering on the intercollegiate, amateur or professional level.

Student-athletes found in violation of NCAA sports wagering rules will be ineligible for competition, subject to appeal to the Committee on Student-Athlete Reinstatement. The appropriate penalties will be considered on a case-by-case basis based on the division’s student-athlete reinstatement sports wagering penalty guidelines.

### **Tobacco Ban**

The use of tobacco products is prohibited by all game personnel (e.g., coaches, athletic trainers, managers and game officials) in all sports during practice and competition. Uniform penalties (as determined by the applicable rules-making committees and sports committees with rules-making responsibilities) shall be established for such use.

The use of tobacco products by a student-athlete is prohibited during practice and competition. A student-athlete who uses tobacco products during a practice or competition shall be disqualified for the remainder of that practice or competition.

## **Participant Expectations and Guidelines**

### **Alternates**

Individuals on the alternate list may be added to the championship up until the start of the first race on Wednesday. Once the first race has started, no more alternates will be added.

### **Uninvited Relay Swimmers**

Institutions that have at least one invited swimmer and are eligible to swim relays through Steps 1 through 3 of the Relay Qualification Procedures as outlined in the 2023-24 Division I Swimming and Diving Pre-Championships Manual are allowed to bring **up to four student-athletes** to the championships to serve as uninvited relay swimmers as long as the maximum number of student-athletes per team do not exceed 18. Uninvited relay swimmers are student-athletes who were not invited to the championships in an individual event but can serve as relay alternates if needed. **The following policies apply to uninvited relay swimmers:**

- Uninvited relay swimmers will not receive reimbursement from the NCAA (travel and per diem) for attending the championships;
- Uninvited relay swimmers may participate as alternates on any relay for which an institution is eligible;
- Uninvited relay swimmers must be eligible student-athletes who are listed on the team roster online.
- Uninvited relay swimmers may not swim any individual events;
- Institutions must designate any potential uninvited relay swimmers (up to four) at the time of registration. Only student-athletes who were invited in individual events or the designated uninvited relay swimmers (up to four) may be used as alternates for relays;
- Uninvited relay swimmers will count towards the limit of 18 participants;
- If an institution scratches a student-athlete after selections, that student-athlete cannot be used as an uninvited relay swimmer; and
- Uninvited relay swimmers do not count towards parking pass numbers but do count towards deck pass allotment.

Submit uninvited relay swimmer names via the new [relay declaration form](#) due 3 p.m. Wednesday, March 13. Those names can be changed up to registration on site. Send questions or uninvited relay only swimmer changes to John Bugner ([jbugner@ncaa.org](mailto:jbugner@ncaa.org)).

### **Appeals**

All appeals must be submitted on the official appeal form, which will be available at the head table on deck. The form must be completed in full and submitted to the referee not later than 15 minutes after the finish of the final heat in that session of the event in which the appeal is applicable. Appeals will be acted upon by the appropriate meet committee. The decision of this committee is final. Any appeal before, during or immediately after a race should be resolved at the earliest opportunity, but not later than immediately following the current session. The use of video is not permitted during the appeal process.



### Diving Lists

Each competitor who qualifies for the NCAA championships must submit their list of dives to DiveMeets Monday before the championships begin. These lists of dives must be verified and signed by the diver and the coach by the scratch deadline, and shall include the international dive numbers, position letters, the degree of difficulty and the platform height. Each competitor shall be responsible for the correctness of these areas. Failure to follow proper entry procedures may result in a financial penalty.

### Diving Signal

In the finals of all diving events, the dive shall be executed after an auditory signal is given by the referee. The signal shall not be given before the diver has assumed a ready position on the board or platform and the referee has checked the master sheet and indicator board. For backward and inward take-offs, the diver shall not proceed to the end of the springboard or platform until the signal has been given by the referee.

### Diving Tiebreaker

**In the event of a tie for eighth place in the prelims** of diving 1-meter, 3-meter or platform events, the tie-breaking method is to take all nine divers to the final. The consolation finals will thus have seven competitors in the event, none finishing higher than 10th place in the final standings. In the evening's final, the nine competitors will do a six-dive list. The highest place finisher of the tied divers will remain in the place that they finished, while the other diver will place ninth.

**In the event of a tie for 16<sup>th</sup> place in the prelims** of diving 1-meter, 3-meter or platform events, the tie-breaking method is to take all nine divers to the consolation final. In the consolation final the nine competitors will do a six-dive list. The highest place finisher of the tied divers will remain in the place that they finished, while the other diver will place 17th overall in the contest and not be awarded any team points.

**NOTE:** If there are more than two divers tied for eighth or 16th place, all tied divers will move into the appropriate final.

### Maximum Number of Events

A student-athlete is permitted to compete in a maximum of seven events, of which not more than three may be individual events. If a student-athlete is competing in the NCAA championships in three individual events, that student-athlete may only swim in up to four relays. **A student-athlete who swims more than the allowable number of individual or total events will be disqualified from any excess events and shall be prohibited from participating in the remainder of the meet.**

### Participation Requirements

Once officially entered, a competitor must complete all heats, swim-offs, trials (diving) and finals in which the competitor qualifies. This applies to all competitors designated by their coaches to participate in the heats and/or finals of relay events and to all competitors in individual events. Failure to compete for any reason, except in the case of disqualification outlined in the NCAA Men's and Women's Swimming and Diving Rules Book and provisions in this manual, shall disqualify the competitor(s) from that event and shall prohibit any further competition in the meet.

At the championships site, coaches will receive an entry list at registration and will be asked to confirm by their signature that all student-athletes listed are present and will be competing in the championships. Failure to comply with the notification procedures for scratches that are outlined above could result in a substantial penalty to an institution and may include the disqualification of a competitor.

### **Required Events – Diving**

Divers who advance to the championships must compete in at least one event in which they qualified to the championships. In order to enter a diving event at the NCAA championships, a diver must have been in the top 12 and achieved a qualifying score. **A declared false start will NOT count as competing in a required event for NCAA reimbursement.**

### **Required Events – Swimming**

Student-athletes selected to the championships must compete in at least one of the events in which they qualified. If, at the conclusion of the championships meet, a student-athlete has competed in one or more events on an optional-entry basis but has not competed in at least one event in which they qualified for the championships, that competitor will be disqualified from any events in which they participated. In the case of such disqualification(s), the points scored by other teams shall be altered.

Student-athletes who do not meet the participation requirements will not receive transportation and per diem reimbursement. Additionally, institutions that have student-athletes selected to the championships who do not compete may be issued a misconduct with a potential financial penalty. **A declared false start will NOT count as competing in a required event for NCAA reimbursement.**

### **Scratches**

Scratches for specific events will be made on site during the designated hours, and coaches must receive a receipt for scratches to be valid. If a student-athlete has to scratch from their required event(s) on site, there must be a medically-documented reason for scratching and the host athletic trainer/physician must sign-off on the medical scratch.

**NOTE: Scratches submitted after the scratch deadline will be fined \$500. Once the heat sheet is published (emailed to coaches), non-medical scratches will not be accepted, and meet management should be notified of an intended declared false start if the athlete will not compete in the event as published in the heat sheet.**

Scratch box hours for championships are as follows:

**Tuesday:** 8:30 a.m. to Noon and 4 to 5 p.m. for Wednesday events  
**Wednesday:** 8:30 a.m. until the end of the swimming coach's administrative meeting for Wednesday events; 8:30 a.m. to Noon and 4 to 5 p.m. for all Thursday events  
**Thursday:** 8:30 a.m. to Noon and 4 to 5 p.m. for all Friday events  
**Friday:** 8:30 a.m. to Noon and 4 to 5 p.m. for all Saturday events

### **Squad Size Limitations**

An institution shall be allowed no more than 18 competitors (including uninvited relay swimmers and institutionally-funded divers), which will be counted as follows:

- An entrant who swims will be counted as one competitor;
- An entrant who swims and dives will be counted as one competitor;
- An entrant who only dives will be counted as one-half of a competitor in the total team limit; and
- For relays, actual participation in the timed finals of an event shall be counted against the 18 competitors allowed.

### **Uniforms**

Regulations regarding uniforms for swimmers and divers are detailed in Rule 3-1 of the 2023-24 and 2024-25 NCAA Swimming and Diving Rules Book. **If a student-athlete competes in an illegal swimsuit, that**

**student-athlete shall be disqualified from that event. In the event of a relay, the rule shall apply to the disqualification of the relay.** During awards ceremonies, participants must wear their institution's official warm-up uniform.

### **Logo Policy**

An institution's official uniform and all other items of apparel (e.g., team jersey, socks) that are worn by student-athletes in competition may bear a single manufacturer's or distributor's normal trademark, not to exceed 2¼ square inches, including any additional material (i.e., patch) surrounding the normal trademark or logo. The logo or trademark must be contained within a four-sided geometrical figure (i.e., rectangle, square, parallelogram).

In addition, an institution's official uniform cannot bear a design element similar to the manufacturer's that is in addition to another logo or that is contrary to the size restriction.

A student-athlete representing an institution in intercollegiate competition is limited to wearing apparel items that include only the logo (not to exceed 2¼ square inches) of an apparel manufacturer or distributor. This restriction shall not include logos that identify the student-athlete's institution or conference.

These restrictions apply to all apparel worn by student-athletes during the conduct of competition, which includes pre-race or post-race activities.

This bylaw will be strictly enforced at all NCAA championships and the names of individuals and institutions that are not in compliance with this bylaw shall be forwarded to the NCAA enforcement staff.

## **Spectator Information**

### **Artificial Noisemakers**

No air horns or artificial noisemakers are allowed, and electronic effects and bands may not play when the meet is in progress.

### **Banners**

Only banners allowed in or around the competition area are those approved by the NCAA Division I Swimming and Diving committee. **Any banners hung by the teams or spectators will be removed.**

### **Concessions**

Concessions offering food and beverages will be located in the spectator hallway of the Ramsey Center.

Concessions will be available for purchase at the venue on competition days from 9:30 a.m. until 30 minutes before the end of the morning session and reopen at 5:00 p.m. until 30 minutes before the end of competition.

### **Entrance**

Spectators must enter the facility through the spectator entrance of the Ramsey Center (see map, [Appendix G](#)). Doors will open for spectators at 9 a.m. every morning for the preliminary sessions. Doors will open at 4:45 p.m. every evening for the finals sessions.

### **First Aid**

First aid for fans is available by contacting an usher or ticket taker in your seating area. They will alert event medical staff and provide care as quickly as possible.

### **Flash Photography**

Flash photography is prohibited at the start of each race and/or during diving events any time it may distract and potentially endanger the student-athletes.

### **Heat Sheets**

Heat sheets will be available for purchase in the merchandising area, located near the spectator entrance.

### **Parking for Spectators**

Parking for spectators is available at the Intramural Fields Parking Deck. A complimentary shuttle will run from the parking deck to the Ramsey Center. See the map in [Appendix I](#) for more details.

## **Tickets**

If available, tickets are available to purchase online at [ncaa.com/tickets](http://ncaa.com/tickets), and on-site at the Ramsey Center on competition days. The ticket office will be open 90 minutes prior to competition. Doors will open 60 minutes before competition for prelim sessions and 75 minutes before competition for finals sessions.

### **Administrative Tickets**

All administrators must have a ticket to access the facility if not part of the team's deck pass allotment. Hospitality passes are available for administrators who have tickets, which will provide access to the hospitality area but **NOT** the deck. Please direct requests to John Bugner ([jbugner@ncaa.org](mailto:jbugner@ncaa.org)).

### **Allotments**

Each institution was offered the opportunity to purchase 40 premium seats on a first-come-first-served basis. Any additional tickets over the initial 40 tickets will be assigned after the deadline in the next best available location on a first-come-first-served basis.

### **Complimentary Tickets**

There are no complimentary tickets for this event.

### **Diving**

In the event of a sellout, a limited number of preliminary diving-only tickets will be available following the conclusion of each preliminary swimming session at Ramsey Center Ticket Office. These tickets will only be good for preliminary diving sessions – not for finals.

- There will NOT be an opportunity to purchase a Finals or All-Session ticket, even if your diver advances out of preliminaries;
- If tickets are sold out for the 10 a.m. swimming preliminaries and the 6 p.m. finals each day, the preliminary diving ticket will NOT provide access to any of these sessions.
- These tickets are valid for general admission between 11:45 a.m. and 3:30 p.m. Thursday, Friday and Saturday. While diving warm-ups begin prior to noon, diving preliminary ticketholders will not be allowed into the facility until 11:45 a.m. Following preliminary diving competition, all diving preliminary ticketholders will be required to exit the facility.
- Tickets will be general admission and be \$10/day. A separate ticket will be required for each day.

Anyone wishing to purchase a diving preliminary ticket may do on-site after Noon Eastern time, Monday, March 18. These tickets will NOT be available prior to Noon on Monday or online.

### **Will Call Tickets**

All tickets will be mobile tickets. Individuals must download the Georgia Athletics app and have the tickets transferred to them.

### **Institutional-Guest Tickets**

If an institution purchases tickets for student-athlete/coach guests, the institution should provide appropriate staff or other university personnel to distribute tickets on site, if needed. Georgia will provide tables inside the entrance of Ramsey Center for ticket distribution. Institutions should contact Jack Flood in the event (a) there is a need for space to distribute tickets on site, and/or (b) an institution does not have plans to provide a staff member to manage distribution. In the event an institution's will call is greater than 20, Georgia can provide a staff member to manage that individual institution's will call at a cost of \$150. Arrangements for this service must be made with Jack Flood by no later than the Sunday before the start of each week of competition. All tickets will be mobile tickets.

### **Payment**

Credit cards (MasterCard/Visa/American Express/Discover) and cash will be accepted on-site.

### **Ticket Office Hours**

If available, tickets can be purchased from the Ramsey Center ticket office 60 minutes before the start of each session Wednesday through Saturday. The ticket office will close one hour after the start of each session Wednesday through Saturday.

### **Ticket Policies**

All fans must possess a ticket and will be asked to show their ticket each time they enter the seating area of the facility. The only exception is for a child under two years of age that will be sitting on an adult's lap. If the child needs his or her own seat at any point during the session, a ticket must be purchased.

### **Ticket Prices**

All Session – \$130

Single Session – \$20

## **Transportation/Travel**

### **Expenses/Reimbursement for Participant Institutions**

Expense reimbursement for participation in the championships will be filed through an online system. All competing institutions must request reimbursement through the system in order to receive the appropriate reimbursement. Transportation expenses and per diem allowances shall be provided for all qualifying student-athletes and all eligible non-athletes. The Travel Expense System, as well as per diem allowance policies, are available on the [NCAA website](#).

### **Air Travel**

Based on the travel policies, if you are eligible for a flight, please contact Short's Travel Management at 866-655-9215 as soon as possible to arrange your air travel. At any time prior to the selection announcement, you may access the travel portal at [www.shortstravel.com/ncaachamps](http://www.shortstravel.com/ncaachamps) to update your team contact information, travel party roster, equipment manifest and any preferences. Entering this information prior to selections will help expedite the travel booking process required to issue tickets.

Your institution user ID and password login credentials, for the Short's Portal, were emailed to the university director of athletics prior to Fall 2023 championships. If you still need assistance with your Short's Portal user ID and password, please email [ncaalo@shortstravel.com](mailto:ncaalo@shortstravel.com) or [travel@ncaa.org](mailto:travel@ncaa.org).

### **Ground Transportation**

Individual sports will be reimbursed a mileage rate per person per mile in accordance with the NCAA travel policy. Individual sports who wish to drive instead of fly will be reimbursed mileage up to the cost of a commercial flight (quote to be obtained from Short's Travel).

### **Travel Expense System**

Per diem will be provided for an official travel party. Please reference the NCAA travel policies for all information regarding transportation and per diem reimbursement. Per diem and other eligible expenses will be reimbursed through the Travel Expense System (TES). Please go to [travel.ncaa.org](http://travel.ncaa.org) to file for reimbursement or request a travel exception. Registration with an institutional email address is required to access TES through NCAA My Apps. The NCAA travel department may be reached at 317-917-6757, or by email at [travel@ncaa.org](mailto:travel@ncaa.org).

Please reference the NCAA travel policies [here](#). The NCAA travel policy is updated annually and the travel policies supersede all other documents.

### **Parking for Teams**

Each team will receive complimentary parking passes based on the number student-athletes selected from the institution. The number of passes being provided is outlined in the table below.

<b>Number of Selected Swimmers</b>	<b>Number of Complimentary Parking Passes</b>
1 – 3 swimmers	One
4 – 7 swimmers	Two
8 – 10 swimmers	Three
11 or more swimmers	Four

Please note that, in the event an institution uses a **charter bus**, this will take the place of **two** parking passes.

In the event a team is bringing at least one diver, an additional parking pass will be added to the team's diving packet.

Parking passes will be included in the team packets picked up at registration. The parking passes provided will allow teams/coaches to park in the surface lot out front of the Ramsey Center. Refer to [Appendix I](#) for specific parking locations.

If a team has the need to purchase additional parking passes, they may do so by contacting Christie Purks ([cpurks@sports.uga.edu](mailto:cpurks@sports.uga.edu)) no later than Tuesday, March 19. Additional passes are \$50 for buses and \$30 for cars.

Information on spectator parking is located in the **Spectator Information** section of this manual.

### **Travel Party Size**

Please refer to the NCAA travel policies for all information regarding transportation and per diem expenses. Travel policies are located online [here](#). Please reference [Appendix A](#) of the travel policies for reimbursable travel party numbers.

Reimbursement and per diem **will not** be provided for any uninvited relay swimmers that were not selected to the championships in an event, any institutionally-funded diver or for any student-athletes who are selected but do not participate in their required event(s).

**APPENDIX A – TRAVEL INFORMATION AND ROSTER FORM**

**Contact Information:**

Title	Name	Cell Phone	Email
Institution			
Head Coach			
Sports Information Director			
Athletic Trainer			
Onsite Administrator			

**Travel Logistics:**

Arrival Date	Click here to enter a date.	Arrival Time		Check here if you are driving	<input type="checkbox"/>
Airline		Flight Number		Hotel	
Number of vehicles on site:		Buses		Vans	
				Cars	

**Team Roster:** An institution shall be allowed no more than 18 competitors (including uninvited relay swimmers and institutionally-funded divers), which will be counted as follows:

- An entrant who swims will be counted as one competitor;
- An entrant who swims and dives will be counted as one competitor;
- An entrant who only dives will be counted as one-half of a competitor in the total team limit; and
- For relays, actual participation in the timed finals of an event shall be counted against the 18 competitors allowed.

**MAXIMUM LIMITS: 1-4 PARTICIPANTS (FOUR PASSES); 5-9 PARTICIPANTS (FIVE PASSES); 10-14 PARTICIPANTS (6 PASSES); 15+ PARTICIPANTS (7 PASSES); 1 DIVING COACH WITH QUALIFIED DIVER**

Student-Athletes		Student-Athletes	
1.		11.	
2.		12.	
3.		13.	
4.		14.	
5.		15.	
6.		16.	
7.		17.	
8.		18.	
9.		19.	
10.		20.	
Institutional Staff		Title (coach, athletic trainer, etc.)	
1.		Coach	
2.		Coach	
3.		Coach	
4.		Coach	
5.		Coach	
6.		Support Staff	
7.		Diving Coach (with qualified diver)	
8.		Athletic Trainer	
9.		Massage Therapist	
10.		Sports Information Director	

**Please email by Noon Eastern time, Sunday, March 17 to the following:  
John Bugner, [jbugner@ncaa.org](mailto:jbugner@ncaa.org)**

**APPENDIX B – WOMEN’S COMPREHENSIVE SCHEDULE (all times local)**

<b>Monday</b>	4 to 8 p.m.		Gabrielsen Natatorium open
	2 p.m.	Committee Walkthrough	Gabrielsen Natatorium
	4 to 8 p.m.	Registration	Gabrielsen Natatorium
<b>Tuesday</b>	8 a.m. to 9 p.m.		Gabrielsen Natatorium open
	8 a.m. to 5 p.m.	Registration	Gabrielsen Natatorium
	8:30 a.m. to Noon	Scratch box open	
	4 to 5 p.m.	Scratch box open	
<b>Wednesday</b>	8 a.m. to 10 p.m.		Gabrielsen Natatorium open
	8 a.m. to 5 p.m.	Registration	Gabrielsen Natatorium
	8:30 a.m. to end of coaches mtg	Scratch box open (Wednesday event)	
	8:30 a.m. to Noon	Scratch box open (Thursday events)	
	11:30 a.m.	Swimming coaches meeting – <b>VIRTUAL</b>	
	1 p.m.	Diving coaches meeting – <b>VIRTUAL</b>	
	4 to 5 p.m.	Scratch box open (Thursday events)	
	4 to 5:50 p.m.	Warm ups	
	5:50 p.m.	Pool Cleared	
	5:51 p.m.	National Anthem	
	<b>6 p.m.</b>	<b>Day 1 Finals</b>	
		200 Medley Relay – all heats of timed final	
		<b>AWARDS 200 MEDLEY RELAY</b>	
		<b>45-minute break after completion of last heat</b>	
		800 Freestyle Relay – all heats timed final	
		<b>AWARDS 800 FREESTYLE RELAY</b>	
<b>Thursday</b>	6 a.m. to 10 p.m.		Gabrielsen Natatorium open
	8:30 a.m. to Noon	Scratch box open (All Friday events)	
	6 to 9:50 a.m.	Warm ups	
	9:50 a.m.	Pool Cleared	
	<b>10 a.m.</b>	<b>Day 2 Swimming Trials</b>	
	12:15 p.m.	One-Meter Diving Trials	
	4 to 5 p.m.	Scratch box open (All Friday events)	
	4 to 5:50 p.m.	Warm ups	
	5:15 p.m.	One-Meter Diving Consolation Finals	
	5:50 p.m.	Pool Cleared	
	5:51 p.m.	National Anthem	
	<b>6 p.m.</b>	<b>Day 2 Finals</b>	
		500 Freestyle Consolation	
		500 Freestyle Final	
		<b>AWARDS 500 FREESTYLE</b>	



200 Individual Medley Consolation  
200 Individual Medley Final  
**AWARDS 200 INDIVIDUAL MEDLEY**

50 Freestyle Consolation  
50 Freestyle Final  
**AWARDS 50 FREESTYLE**

One-Meter Diving Finals  
**AWARDS ONE-METER DIVING**

200 Freestyle Relay – all heats of timed final  
**AWARDS 200 FREESTYLE RELAY**

**Friday**                      6 a.m. to 10 p.m.    Gabrielsen Natatorium open

8:30 a.m. to Noon

6 to 9:50 a.m.

9:50 a.m.

**10 a.m.**

12:15 p.m.

4 to 5 p.m.

4 to 5:50 p.m.

5:15 p.m.

5:50 p.m.

5:51 p.m.

Scratch box open (All Saturday events)

Warm ups

Pool Cleared

**Day 3 Swimming Trials**

Three-Meter Diving Trials

Scratch box open, all Saturday events

Warm ups

Three-Meter Diving Consolation Finals

Pool Cleared

National Anthem

**6 p.m.**

**Day 3 Finals**

400 Individual Medley Consolation

400 Individual Medley Final

**AWARDS 400 INDIVIDUAL MEDLEY**

100 Butterfly Consolation

100 Butterfly Final

**AWARDS 100 BUTTERFLY**

200 Freestyle Consolation

200 Freestyle Final

**AWARDS 200 FREESTYLE**

100 Breaststroke Consolation

100 Breaststroke Final

**AWARDS 100 BREASTSTROKE**

100 Backstroke Consolation

100 Backstroke Final

**AWARDS 100 BACKSTROKE**

Three-Meter Diving Finals

**AWARDS THREE-METER DIVING**

400 Medley Relay – all heats of timed final  
**AWARDS 400 MEDLEY RELAY**

**Saturday**      6 a.m. to 10 p.m.      Gabrielsen Natatorium open

6 to 9:50 a.m.

Warm ups

9:50 a.m.

Pool Cleared

**10 a.m.**

**Day 4 Swimming Trials**

Noon

Platform Diving Trials

1 p.m.

1,650 Freestyle Warm ups

Approx. 3:45 p.m.

1,650 Freestyle (early heats)

4 to 5:50 p.m.

Warm ups

5:15 p.m.

Platform Diving Consolation Finals

5:50 p.m.

Pool Cleared

5:51 p.m.

National Anthem

**6 p.m.**

**Day 4 Finals**

1,650 Freestyle – last heat of timed finals

**AWARDS 1,650 FREESTYLE**

200 Backstroke Consolation

200 Backstroke Final

**AWARDS 200 BACKSTROKE**

100 Freestyle Consolation

100 Freestyle Final

**AWARDS 100 FREESTYLE**

200 Breaststroke Consolation

200 Breaststroke Final

**AWARDS 200 BREASTSTROKE**

200 Butterfly Consolation

200 Butterfly Final

**AWARDS 200 BUTTERFLY**

Platform Diving Finals

**AWARDS PLATFORM DIVING**

400 Freestyle Relay – all heats of timed final

**AWARDS 400 FREESTYLE RELAY**

**TEAM AWARDS**

*Note: All times are subject to change.*

**APPENDIX C – WOMEN’S SWIMMING PRACTICE/WARM-UP SCHEDULE (all times local)**

**PRELIMINARIES**

<b>6 to 8:30 a.m.</b>	Open warm-up
<b>8:30 to 9:30 a.m.</b>	<i>All kicking must move to warm-up pool. Swimming only in competition pool. – <b><u>NO equipment permitted.</u></b> Swimmers may only dive off the blocks in sprint lanes.</i>
	Lanes 1, 8 PACE
	Lanes 2, 7 SPRINT (one way only)
	Lanes 3, 4, 5, 6 GENERAL
<b>9:30 to 9:50 a.m.</b>	<i>Swimmers may only dive off the blocks in sprint lanes.</i>
	Lanes 1, 8 PACE
	Lanes 2, 3, 7 SPRINT (one way only)
	Lanes 4, 5, 6 GENERAL
<b>9:50 a.m.</b>	Clear competition pool.

**FINALS**

<b>4 to 5:30 p.m.</b>	<i>All kicking must move to warm-up pool. Swimming only in competition pool. – <b><u>NO equipment permitted.</u></b> Swimmers may only dive off the blocks in sprint lanes.</i>
	Lanes 1, 8 PACE
	Lanes 2, 7 SPRINT (one way only)
	Lanes 3, 4, 5, 6 GENERAL
<b>5:30 to 5:50 p.m.</b>	<i>Swimmers may only dive off the blocks in sprint lanes.</i>
	Lanes 1, 8 PACE
	Lanes 2, 3, 7 SPRINT (one way only)
	Lanes 4, 5, 6 GENERAL
<b>5:50 p.m.</b>	Clear competition pool.

***Note: All times are subject to change.***

**APPENDIX D – DIVING PRACTICE/WARM-UP SCHEDULE (all times local)**

<b>Monday</b>	4 to 8 p.m.	Open training	
<b>Tuesday</b>	8 a.m. to 9 p.m.	Open training	
<b>Wednesday</b>	8 a.m. to 12:45 p.m. 12:45 to 2 p.m. 2 to 10 p.m.	Open training Diving well closed (Coaches Meeting) Open training	
<b>Thursday</b>	6 to 8:05 a.m. 8:05 to 11:35 a.m. 11:35 a.m. to 12:10 p.m. 12:15 p.m. After prelims 4:30 p.m. 5:15 p.m. 6 p.m. Approx. 7 p.m.	Open training Assigned training (3 grps, 70 min each) Open training 1-meter prelims begin Open training 1-meter closed to consolation finalists only Consolation finals 1-meters closed to finalists only 1-meter finals (see official timeline)	<b>A:</b> _____ <b>B:</b> _____ <b>C:</b> _____
<b>Friday</b>	6 to 8:05 a.m. 8:05 to 11:35 a.m. 11:35 a.m. to 12:10 p.m. 12:15 p.m. After prelims 4:30 p.m. 5:15 p.m. 6 p.m. Approx. 7:20 p.m.	Open training Assigned training (3 grps, 70 min each) Open training 3-meter prelims begin Open training 3-meter closed to consolation finalists only Consolation finals 3-meters closed to finalists only 3-meter finals (see official timeline)	<b>A:</b> _____ <b>B:</b> _____ <b>C:</b> _____
<b>Saturday</b>	6 to 7:50 a.m. 7:50 to 11:20 a.m. 11:20 to 11:55 a.m. Noon After prelims 4:30 p.m. 5:15 p.m. 6 p.m. Approx. 7:20 p.m.	Open training Assigned training (3 grps, 70 min each) Open training Platform prelims begin Open training Platform closed to consolation finalists only Consolation finals Platforms closed to finalists only Platform finals (see official timeline)	<b>A:</b> _____ <b>B:</b> _____ <b>C:</b> _____

***Note: All times are subject to change. Please double check with scoring table for any changes.***

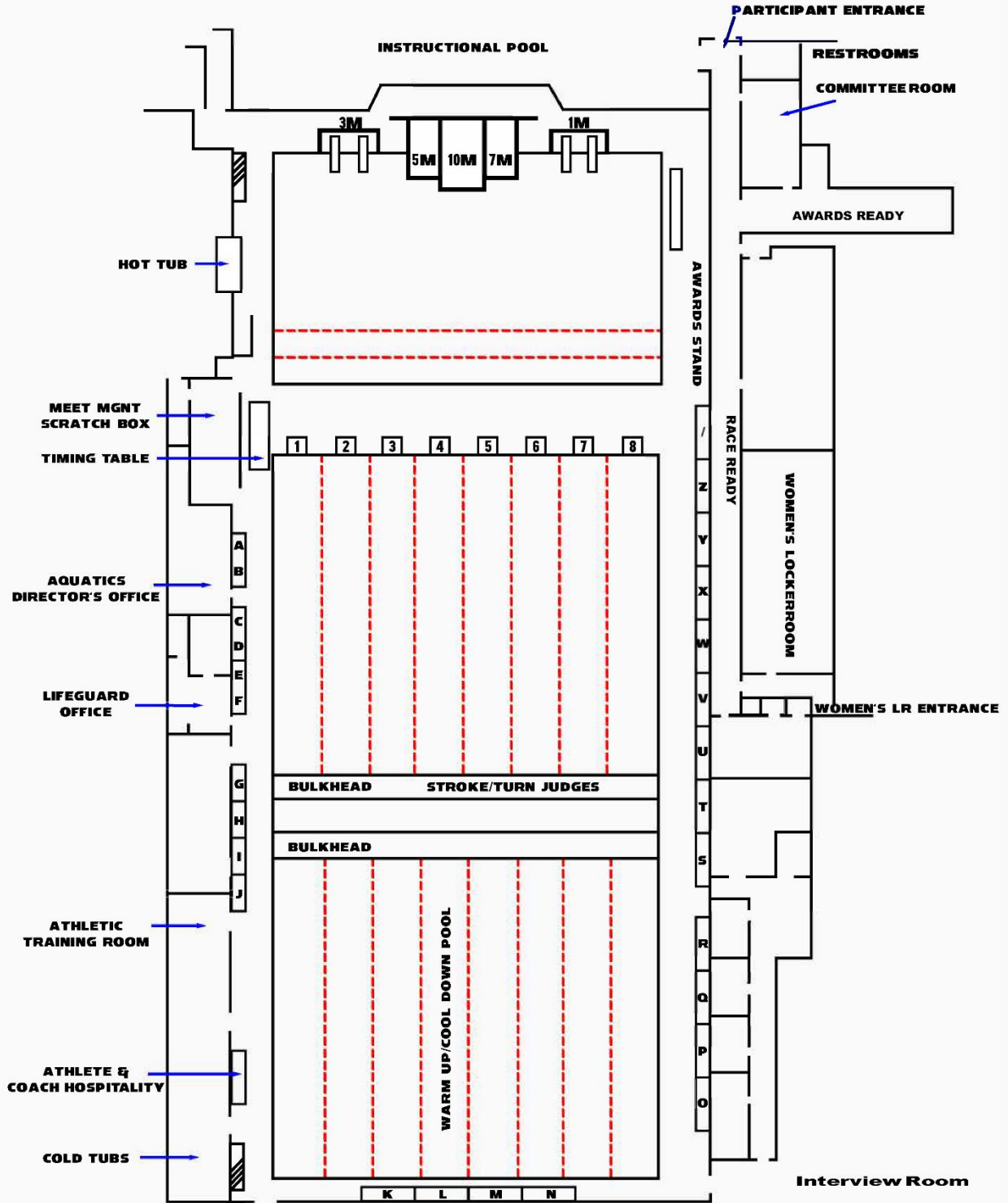
APPENDIX E – TEAM LOADING/UNLOADING MAP

2024 NCAA Swimming & Diving Championships  
Team Loading/Unloading Directions



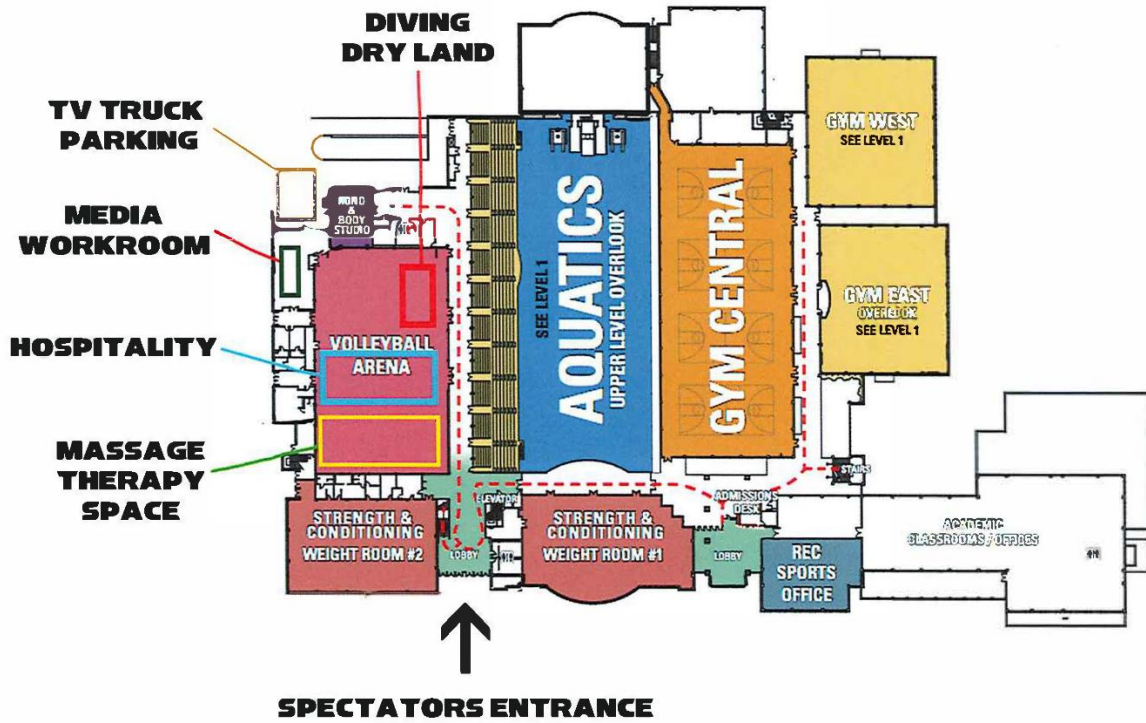
- Buses are to travel in the right lane around the Ramsey Center.
- UGA Police officers and members of the UGA Event Staff will be outside to indicate where buses are to stop in the right lane.
- Participants are to unload on the sidewalk and follow orders from the UGA Police and Event Staff when crossing the street.
- Participants are NOT allowed to cross the road at any point.
- Participants MUST cross the road at the crosswalk designated by UGA Police.
- Buses will NOT be allowed to pull out into traffic in the left lane.
- Buses must proceed around the Ramsey Center in the right lane.

**APPENDIX F – DECK LEVEL MAP**



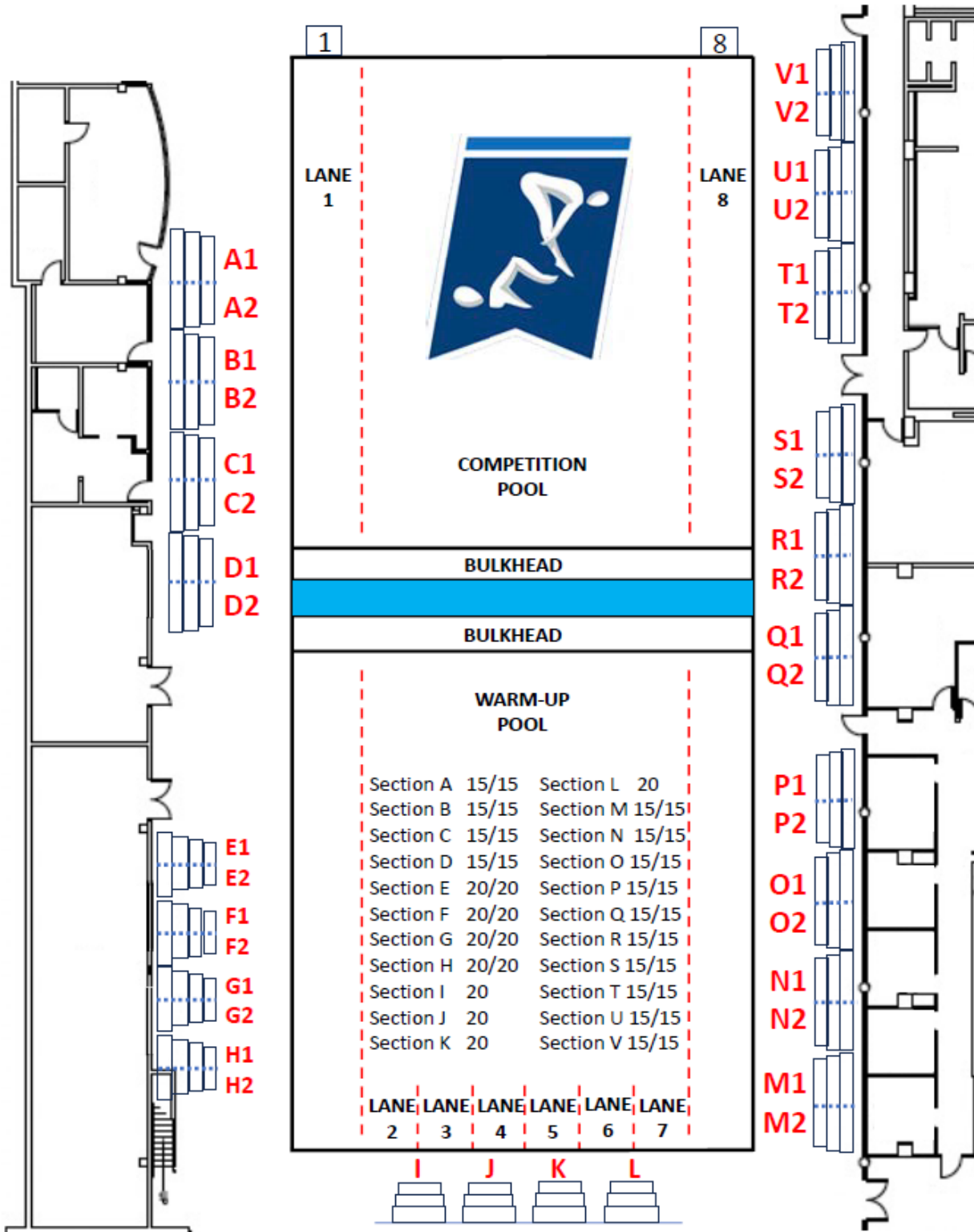
# THE RAMSEY STUDENT CENTER

2ND FLOOR



**APPENDIX H – TEAM SEATING CHART**

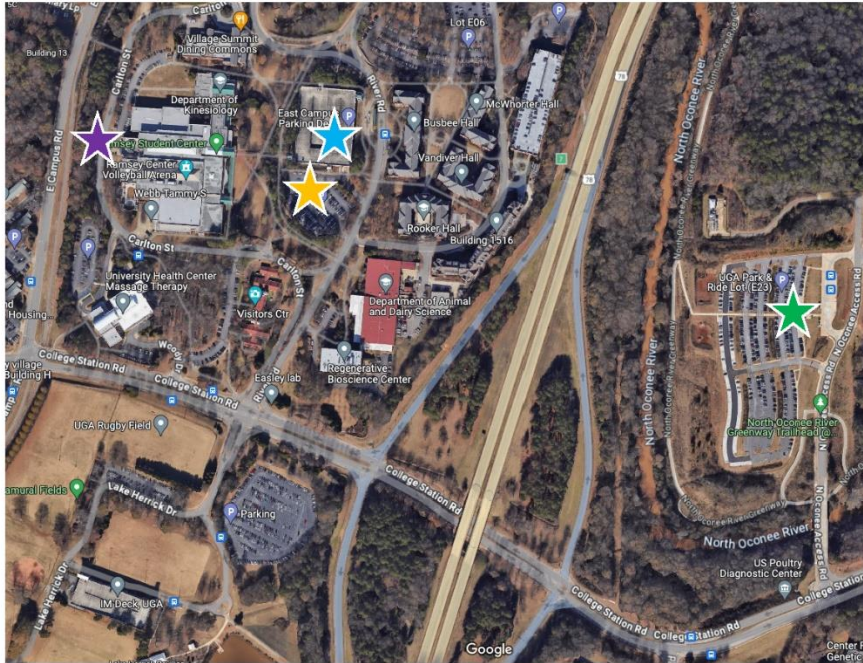
**TEAM SEATING DIAGRAM**





**APPENDIX I – PARKING MAP**

**2024 NCAA SWIMMING & DIVING  
PARKING MAP**



- ★ Team Van Parking
- ★ Team Bus Drop Off
- ★ Spectator Parking
- ★ Thursday & Friday  
8:45 AM – 4:00 PM
- \* Complimentary Shuttle  
to Ramsey Center
- ★ Spectator Parking
- ★ Wednesday,  
Thursday & Friday  
Evening Sessions
- ★ All Day Saturday

\* Complimentary shuttle to the Ramsey Center will operate from 8:45 AM to 4:00 PM on Thursday and Friday.

## APPENDIX J – EMERGENCY ACTION PLAN

**\*\* Note EMS will be on site during practice and competition \*\***

Should an injury occur in a competition pool, incident reports will be completed by both the University of Georgia staff as well as NCAA Division I championships meet personnel.

**Address:** 330 River Road, Athens, Georgia 30602

**GPS Coordinates:** 33.937877, -83.370840

**Access:** Manual garage door



### Role of First Responders

1. Immediate care of the injured or ill athlete.
2. Lifeguards will execute the water rescue and transfer care to the athletic trainer when the patient reaches the pool deck.
  - a. Designate an individual to call 911.
  - b. Provide pertinent information: name, location, telephone number, number of injured individuals, condition of the injured, first aid rendered, specific directions, other information as requested.
  - c. Notify Campus Police at 706-542-2200.
  - d. Notify Ramsey Center Staff at 706-542-1454 or via two-way radio in lifeguard office
3. Retrieve emergency equipment.
4. Direct EMS to scene.
5. Scene control.

### Venue Directions

The Ramsey Center is located on River Road, which combines with Carlton Street to form a one-way loop around the facility. Two roads provide access to this loop: College Station Road and East Campus Road. Designate an individual to wait for EMS at the appropriate location and direct to the pool deck.

**Position 1: Ambulance Loading Dock:** Most direct access to the natatorium on the west side of the building. Open natatorium loading dock door manually.

**Position 2: Ramsey Center Front Desk:** Notify Ramsey Center staff to remove the **sidewalk posts (X)** at the east side of the building.

**Emergency Personnel:** Certified athletic trainer, athletic training student(s), and lifeguards on site for practice and competition. Additional sports medicine staff may be accessible from the University Health Center Sports Medicine Department, which is located across the street from the Ramsey Center.

**Emergency Communication:**

<b>Beth Harness</b>	407-621-1478
<b>Anna Randa</b>	706-338-0129
<b>Swimming and Diving satellite athletic training room</b>	706-542-7745
<b>University Health Center Sports Medicine Department</b>	706-542-8636

**Emergency Equipment:**

AED, trauma kit, and splint bag are maintained in the swimming and diving satellite athletic training facility. AED and spine board are also maintained in the lifeguard office located next to the athletic training room.

**Medical Facilities:**

Ambulance transports will go to Piedmont Athens Regional Medical Center, a Level II Trauma Center. Located at 1199 Prince Avenue. Main switchboard: 706-475-7000. Emergency Department: 706-475-3304.

**Medical Time Out:**

A meeting should be conducted with medical staff prior to start of athletic events to complete a pre-athletic checklist reviewing: the venue EAP, staff members (roles and locations), communication, location of ambulance, emergency equipment (type and location), designated transport facility, emergency protocols, and any issues that could potentially impact the EAP (i.e. crowd flow, weather, construction).

Again, if you have any questions/concerns or if we can be of any assistance during your stay, please feel free to contact us, and welcome to The University of Georgia!

## APPENDIX K – FACILITY SPECIFIC INFORMATION



### TIMING SYSTEM/TOUCHPADS

The OMEGA Timing System will be used for the NCAA Division I Men's and Women's Swimming and Diving Championships. The touchpads allow each swimmer to stop the clock by exerting pressure of between 3.3 and 5.5 pounds on panels at the ends of each lane.

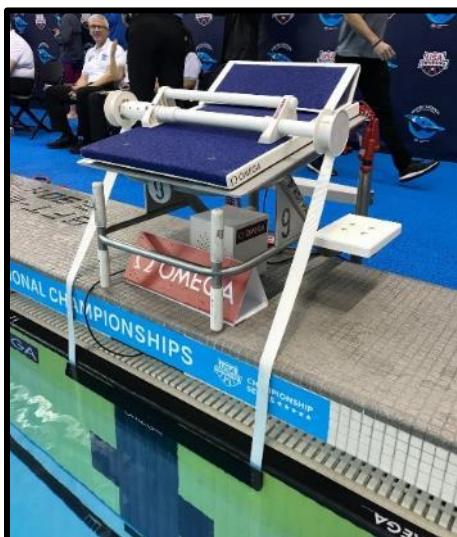
All touchpads will be gutter-hung design. Both the start end and the turn end of the pools will be equipped with gutter-hung touchpads. The warm-up pool will have two lanes equipped with gutter-hung touch pads at each end, along with OSB Tops.



### OLYMPIC STARTING BLOCK

The Olympic Starting Block Top is a part of the new generation of starting blocks. It has an inclined foot-rest, which allows a significant improvement of thrust when the swimmer starts. This proven technology has been adapted to the new starting block. The OSB is designed in fiberglass to ensure the platform robustness while optimizing its weight. The platform is covered with an anti-skid surface providing comfort and safety.

**Please note:** The wedge on the block top is adjustable, however; not removable.\*



### BACKSTROKE LEDGE

The OSB are equipped with the Backstroke Ledge OBL2 Pro. The OBL2 Pro improves the start push and trajectory of the swimmer when entering the water. The length can be set to give different positions using a manual rotating system.

**Please note:** Timing staff will place the backstroke ledge prior to Relay event, but removal during the relay will be the responsibility of the athletes.\*





### **RELAY EXCHANGE REVIEW CAMERAS**

The Swiss Timing High Speed Video system will be used for relay exchanges and backup timing. The High-Speed Video system is a hardware/software solution for video-based time measurement. The high-speed cameras of the system are directed at the finish. During a race, the system captures the video data generated by the cameras on hard disk. Browsing through the recorded video sequence, the system provides the time of race for every recorded image. This approach makes it possible to judge exactly when a competitor reaches a defined location, by finding the corresponding image in the video.

A big advantage of the system is the high temporal resolution. Its high-speed cameras generate 100 full frames per second. An important feature of the High-Speed Video system is the camera synchronization. The system guarantees that the images for all cameras are grabbed synchronously. This makes it possible to film the finish from multiple perspectives or divide a long finish line into up to 4 sections without losing comparability of times. Another advantage of the system is that it is equipped with its own high precision time base so that it can be used as a full back up in competitions.

### **15-METER MARK REVIEW CAMERAS**

The NCAA Division I Men's and Women's Swimming and Diving Championships will be deploying a Swiss Timing camera system for review of any 15-meter mark violation. This is a 4-camera system set from the vantage point of the official making the call. The system records at over 60 fps. The cameras will be used to determine if an official's call of a 15-meter mark violation is accurate and should be upheld.



**APPENDIX L – CLEAR BAG POLICY**

 **GEORGIA CLEAR BAG POLICY**

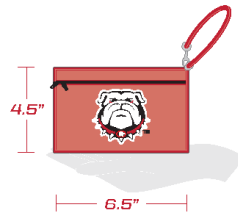
**APPROVED**



**CLEAR TOTE:** Plastic, vinyl or PVC and may not exceed 12" x 6" x 12"



**STORAGE BAG:** 1 gallon re-sealable, clear plastic freezer bag



**SMALL CLUTCH PURSE:** No larger than 4.5" x 6.5" with or without a handle or strap



**SEAT CUSHION/BACK:** No bigger than 16" and no arms or pockets

**PROHIBITED BAGS**



**Large Purse**



**Backpack**



**Duffel Bag**



**Diaper Bag**



**Fanny Pack**



**Drawstring Bag**



**Camera Bag**



**Non-Clear/Printed Pattern Tote**

A COMPLETE LIST OF PROHIBITED ITEMS IS AVAILABLE AT:  
[georgiadogs.com](http://georgiadogs.com)





## GEORGIA CLEAR BAG POLICY

### FREQUENTLY ASKED QUESTIONS

#### ***Why is UGA adopting this policy?***

Our guests are our most prized partners, and ensuring their safety is a top priority. World events continue to impact our security, and we cannot ignore them in the annual analysis of our public safety and stadium security policies at all of our venues.

#### ***How does this policy improve public safety?***

Clear bags provide layers of security with less inconvenience to our guests. As guests walk toward our events, law enforcement can easily spot prohibited items and have the ability to resolve issues before they even get into line. The clear bags are easier and faster to search, greatly reducing faulty bag searches. The policy supports the Department of Homeland Security's "See Something, Say Something" campaign. Additionally, inside the venue, staff members know that a clear bag has already been searched and that any non-clear bag without a security tag requires their attention.

#### ***How does this expedite my entry into the venue?***

This policy enables us to move guests through our security checkpoints faster, allowing staff to be more efficient and effective in checking bags that are brought into the venue. A standard size bag eliminates the need for bag templates to check sizes. Overall, shorter lines mean fewer hassles, and an improved sense of safety for all guests.

#### ***How many bags can each person bring into the venue?***

Each ticketed guest can carry one large clear bag – either a one-gallon Ziploc-style bag or the 12" x 6" x 12" clear bag – plus a small clutch purse [4.5" x 6.5"]. **The small clutch must be carried into the venue outside the clear bag and is subject to search.**

Do not place another bag inside the clear bag.

#### ***Are team-branded bags available?***

Guests who desire to carry Georgia branded bags may purchase them at local retailers. However, any clear 12" x 6" x 12" clear bag with no commercial identification or an inexpensive one-gallon Ziploc-style bag may be used. Clear bags may have only one logo no larger than 4.5" x 3.4" displayed on one side.

#### ***Can I bring my purse?***

Yes, as long as it meets the size requirements. A small clutch purse [4.5" x 6.5"], with or without a handle or strap, is permitted along with either the 12" x 6" x 12" clear tote bag or one-gallon freezer bag.

#### ***What about diaper bags?***

Diapers and other baby supplies can be carried in a clear bag. Each member of a family, including children, is allowed to carry one approved clear bag and a clutch purse into the stadium.

#### ***Can I carry cameras, binoculars, smart phones or tablets separately from the clear bag?***

Binoculars or a phone or camera can be carried into the venue so long as it is not in its own bag.

#### ***Are seat cushion/bags allowed to be carried into the venue?***

Approved seat cushions & seat bags may be carried into the stadium provided they are no wider than 16" and have no arms or pockets.

#### ***If I have certain items that I need to bring into the venue for medical reasons and they won't fit in the clear bag, what do I do?***

Guests carrying medically necessary bags or equipment into the venue will be required to have their bag/equipment inspected and tagged by security at specified locations within each venue. For the Ramsey Center, use the main spectator entrance.

#### ***Do I have to put everything I'm carrying into a permissible clear bag?***

No. This policy is designed to limit only the type of bags carried into the venue, not the permissible items that are brought to a game. In their pockets or jacket, guests can carry keys, makeup, feminine products, comb, phone, wallet, credit cards, etc., if they choose not to put them in a clear bag or clutch purse [4.5" x 6.5"]. And, they can carry a blanket over their shoulders, binoculars and/or camera without the case around their necks or in their hands. A complete list of prohibited items is available at <http://georgiadogs.com/clear-bag-policy/>.

#### ***Does this policy apply to me if I'm working at the game, not attending as a fan?***

Credentialed individuals will continue to enter the stadium through designated gates. These individuals and any items that they bring into the stadium will continue to be screened based on procedures that are already in place. Once screened, the bags will be temporarily tagged, showing that the bag has been screened and approved.



**APPENDIX M – ICE TUB FILL TIMES (all times local)**

**Wednesday**      8 a.m. to 9 p.m.                      Gabrielsen Natatorium open

9 a.m.                      Ice Tub Filled  
1 p.m.                      Ice Tub Filled  
6:15 p.m.                      Ice Tub Filled

**Thursday**      6 a.m. to 10 p.m.                      Gabrielsen Natatorium open

10:45 a.m.                      Ice Tub Filled  
Noon                      Ice Tub Filled  
6:30 p.m.                      Ice Tub Filled  
7:30 p.m.                      Ice Tub Filled

**Friday**      6 a.m. to 10 p.m.                      Gabrielsen Natatorium open

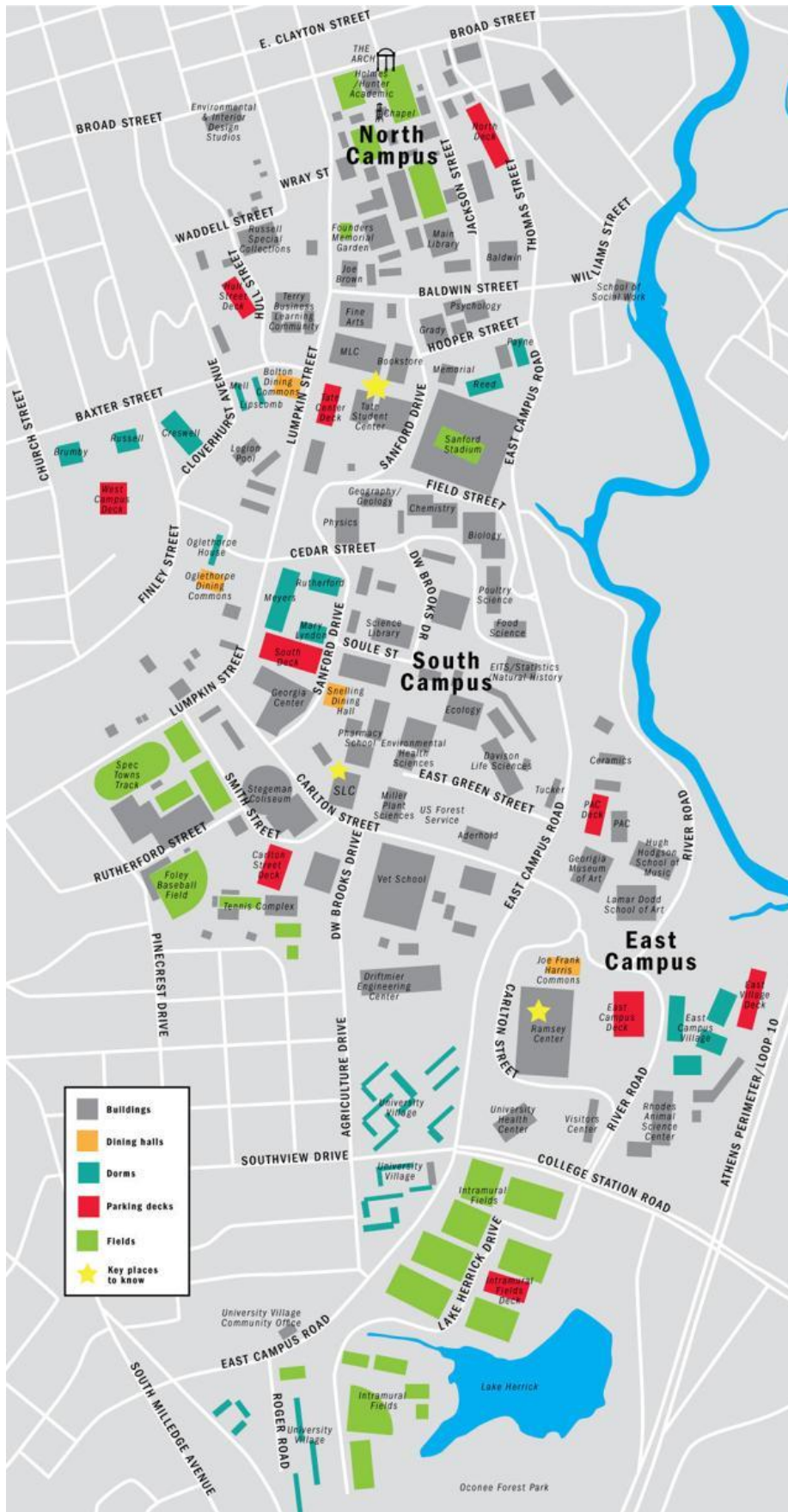
10:45 a.m.                      Ice Tub Filled  
Noon                      Ice Tub Filled  
6:30 p.m.                      Ice Tub Filled  
7:30 p.m.                      Ice Tub Filled

**Saturday**      6 a.m. to 10 p.m.                      Gabrielsen Natatorium open

10:45 a.m.                      Ice Tub Filled  
Noon                      Ice Tub Filled  
4:30 p.m.                      Ice Tub Filled  
6:30 p.m.                      Ice Tub Filled  
7:30 p.m.                      Ice Tub Filled

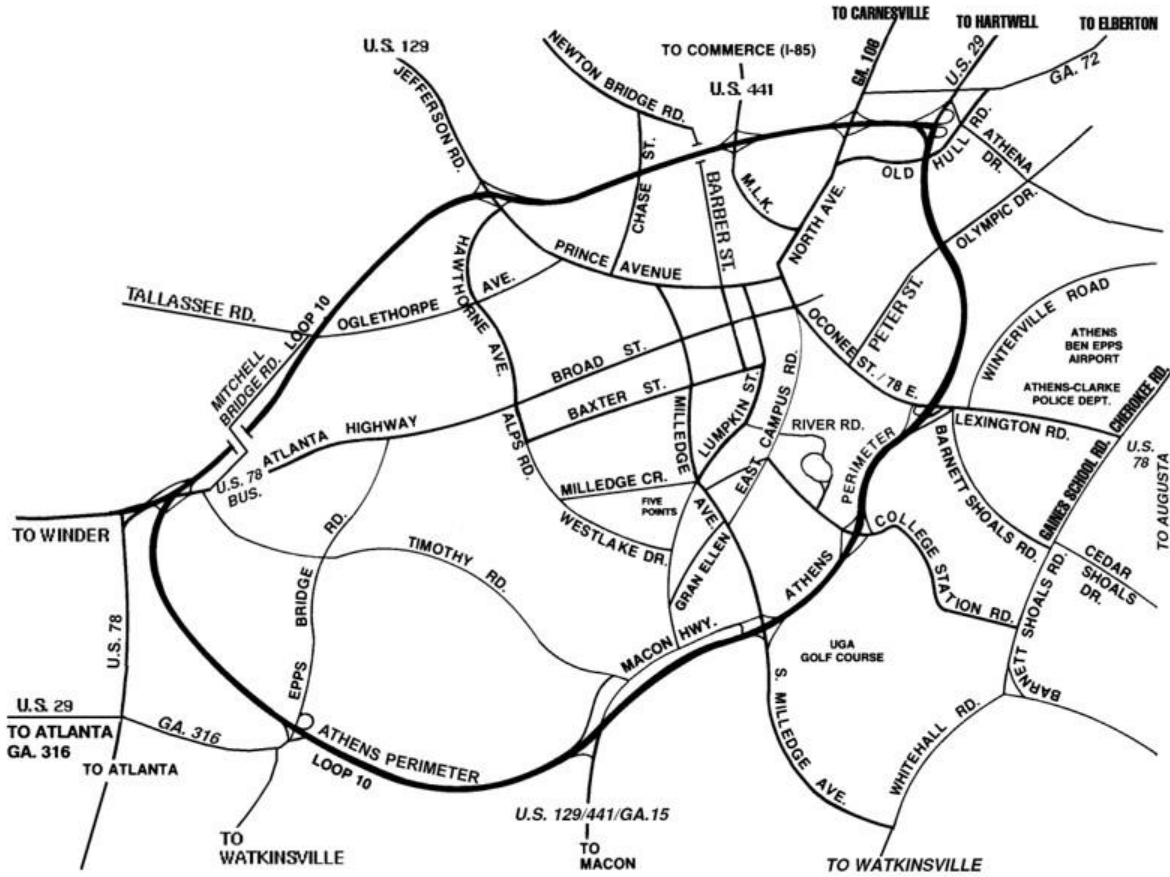


**APPENDIX N – UNIVERSITY OF GEORGIA CAMPUS MAP**




APPENDIX O – ATHENS AREA MAP

# ATHENS, GA





## NCAA Event Direct – NEW - First-time installation & registration instructions

1. Navigate to <https://web3.ncaa.org/eventdirect/pwa/index.html> on your mobile device. Do **NOT** utilize this link on a laptop; mobile devices only.
  - a. iOS – In Safari, tap the share icon  in the center at the bottom of your screen. Tap “Add to Home Screen” and click “Add” to confirm. Event Direct will now appear on your phone’s home screen.
  - b. Android – In Chrome, an onscreen prompt will appear with a prompt to add the app to the home screen. If this prompt does not appear, tap the “3 dots” icon to the top right and select “Add to Home Screen.” Event Direct will now appear on your phone’s home screen.

### I don’t have or I’m not sure if I have an NCAA/MyApps account

2. On the Event Direct home page, navigate to the dropdown menu via icon in the top left. Choose **Select an Event**.
3. Select the desired event from the list. You will be moved to that event’s home page.
4. Scroll to the bottom and select **Register for This Event**. You will be moved to the registration page for the event.
5. Upon entering your email address, if the app identifies you have an existing NCAA My Apps account, a screen will appear with the option to reset your password. **Skip ahead to step #18.**
6. Otherwise, proceed with entering all the requested information and then select **Register**.
7. A notice will appear indicating a validation email has been sent to the email address provided.
8. Locate the email **NCAA Event Direct System Account Request**. Click the link in the email. A new page will appear.
9. Create and confirm a password and select **Submit**
10. Return to the Event Direct app. On the Home page, navigate to the left column dropdown menu. Choose **Login**.
11. Enter the email address/password that comprise your newly created NCAA My Apps account. You are now logged into Event Direct and will return to the home page of your registered event. **Skip ahead to step #23.**

### I have an NCAA/MyApps account and I know my password

12. On the Event Direct home page, navigate to the dropdown menu via icon in the top left. Choose **Login**.
13. Enter the email address and password of your existing NCAA My Apps account. You are now logged into the Event Direct app and will be returned to the app home page.
14. Navigate again to the left column dropdown menu and choose **Select an Event**. Select the desired event from the list. You will be moved to that event’s home page.
15. Scroll to the bottom and select **Register for This Event**. You will be moved to the registration page for the event.
16. Your email address, first/last name, institution/organization will pre-populate. Enter your desired role(s) from the dropdown list of options as well as your mobile phone number. Select **Register**. **Skip ahead to step #23.**


### I have an NCAA/MyApps account and I don’t know my password

17. On the Event Direct Home page, navigate to the dropdown menu via the icon in the top left. Choose **Login**.
18. On the login screen, choose the Forgot Password option and proceed through that process. Upon resetting your password, navigate again to the left column dropdown menu of the Event Direct app and choose **Login**.
19. Enter the email address and password that comprise your NCAA My Apps account. You are now logged into the Event Direct app and will be returned to the app home page.
20. Navigate again to the left column dropdown menu and choose **Select an Event**
21. Scroll to the bottom and select **Register for This Event**. You will be moved to the registration page for the event.
22. Your email address, first/last name, institution/organization will pre-populate. Enter your desired role(s) from the dropdown list of options as well as your mobile phone number. Select **Register**.
23. A notice will appear on the bottom of the page indicating you have registered for the event and are awaiting confirmation by an NCAA championships operations administrator. Once confirmed, this message will disappear and you will have access to additional features for your selected event.



## **NCAA Event Direct - RETURNING - installation & registration instructions**

### **I utilized NCAA Event Direct during the 2022-23 Championship Season**

1. Navigate to the NCAA Event Direct app on your phone; this will be the same mobile app you utilized during the 2022-23 championship season. **Move ahead to step #5 or step #10 as appropriate.**
2. If you deleted the app, navigate to <https://web3.ncaa.org/eventdirect/pwa/index.html> on your mobile device. Do **NOT** utilize this link on a laptop; mobile devices only.
  - a. iOS – In Safari, tap the share icon  in the center at the bottom of your screen. Tap “Add to Home Screen” and click “Add” to confirm. Event Direct will now appear on your phone’s home screen.
  - b. Android – In Chrome, an onscreen prompt will appear with a prompt to add the app to the home screen. If this prompt does not appear, tap the “3 dots” icon to the top right and select “Add to Home Screen.” Event Direct will now appear on your phone’s home screen.
3. **Move ahead to step #4 or step #9 as appropriate.**

### **I have an NCAA/MyApps account and I know my password**

4. On the Event Direct Home page, navigate to the dropdown menu via the icon in the top left. Choose **Login**.
5. Enter the email address and password of your existing NCAA My Apps account. You are now logged into the Event Direct app and will be returned to the app home page.
6. Navigate again to the left column dropdown menu and choose **Select an Event**. Select the desired event from the list. You will be moved to that event’s home page.
7. Scroll to the bottom and select **Register for This Event**. You will be moved to the registration page for the event.
8. Your email address, first/last name, institution/organization will pre-populate. Enter your desired role(s) from the dropdown list of options as well as your mobile phone number (which is **required** to receive text message notifications). Select **Register**. **Skip ahead to step #15.**

### **I have an NCAA/MyApps account and I don’t know my password**

9. On the Event Direct Home page, navigate to the dropdown menu via the icon in the top left. Choose **Login**.
10. On the login screen, choose the Forgot Password option and proceed through that process. Upon resetting your password, navigate again to the left column dropdown menu of the Event Direct app and choose **Login**.
11. Enter the email address and password that comprise your NCAA My Apps account. You are now logged into the Event Direct app and will be returned to the app home page.
12. Navigate again to the left column dropdown menu and choose **Select an Event**. Select the desired event from the list. You will be moved to that event’s home page.
13. Scroll to the bottom and select **Register for This Event**. You will be moved to the registration page for the event.
14. Your email address, first/last name, institution/organization will pre-populate. Enter your desired role(s) from the dropdown list of options as well as your mobile phone number (which is **required** to receive text message notifications). Select **Register**.
15. A notice will appear on the bottom of the page indicating you have registered for the event and are awaiting confirmation by an NCAA championships operations administrator. Once confirmed, this message will disappear and you will have access to additional features for your selected event.

# CONGRATULATIONS ON YOUR TEAMS' SUCCESS!

*We are excited to share that this year, all Student-Athlete Mementos will be given out ONSITE at the Championship!*

## HOW TO PURCHASE ADDITIONAL STUDENT-ATHLETE MEMENTOS FOR YOUR TEAM



The NCAA provides BirdieBox with the email address of a designated point person for each sport and school. Make sure you have communicated to the NCAA the correct person to receive the email which will include your password to access the website for additional mementos. Once the email is sent, you will be instructed to the site to place your school's order: [ncaainstitutionalportal.com](https://ncaainstitutionalportal.com). The number of mementos you will receive will be the same number as the NCAA prescribed travel party. To purchase additional mementos outside of your travel party allotment, please follow below:

- Enter password
- Click "Purchase Additional Gifts"
- Select your division
- Select your sport
- Pick the quantity of additional gifts you want
- Add to your cart and select your school
- Enter your contact information and the shipping address the gifts should be delivered to
- Enter your payment information (all gifts must be paid for at time of checkout)
- Submit your order

Place your Order at: [ncaainstitutionalportal.com](https://ncaainstitutionalportal.com)

### Questions?

Email Christa Selner: [CSelner@BirdieBox.com](mailto:CSelner@BirdieBox.com)

# BirdieBOX New for 2023-2024!

At BirdieBox, we redefine collegiate gifting by transforming it into an unforgettable experience. With an unwavering commitment to quality, creativity, and personalization, we craft each BirdieBox to convey a purposeful message.