



2019 DIVISION II
FIELD HOCKEY
CHAMPIONSHIP

MILLERSVILLE, PA

Millersville University of Pennsylvania, Host

PARTICIPANT
2019-20 MANUAL

TABLE OF CONTENTS

2019 DIVISION II FIELD HOCKEY CHAMPIONSHIP PARTICIPANT MANUAL

SECTION NO.	SUBJECT	PAGE NO.
1	Welcome Letter	1
1	Host Contact Information	2
1	NCAA Contact Information	3
2	Championship Format	4
3	Championship Operations	5
4	Competition Site	5
5	Drug Testing	6
6	Expenses/Reimbursement	7
7	General Public	7
8	Participant Expectations and Guidelines	8
9	Travel Party	9
10	Trophies and Awards	11
11	Uniforms	12
12	Visitors Information	13
APPENDIXES	RESOURCES	
A	Administrative Meeting Agenda	
B	Travel Party Form (Due November 18)	
C	Schedule of Events	
D	Game Time Sheets	
E	Campus Maps	
F	Facility Map	
G	Bus Parking – Marriott Hotel	
H	Ware Center Map	
I	2019 Participant Awards	

SECTION 1 – Welcome/Contact Information



Dear NCAA Field Hockey Participant,

On behalf of Millersville University, I wish to personally congratulate you and your field hockey team on a tremendous season. In addition, it is my pleasure to welcome you to our campus for this weekend's NCAA Field Hockey National Championship.

You may or may not be familiar with Millersville University, so with that said, I hope you find the information contained within the following pages beneficial for your preparation. Our goal is to provide your student-athletes with a once in a lifetime championship experience. The Millersville Athletics staff is available to assist you with any questions, so please do not hesitate to reach out. Best of luck!

Sincerely,

Miles

Miles Gallagher
Director of Athletics

Contact information:
717-871-7694 office
717-278-3415 cell
Miles.gallagher@millersville.edu

Biemesderfer Stadium / Chryst Field
35 Pucillo Drive
Millersville, PA 17551

cc: Roberta Page
Field Hockey Committee

2019 NCAA Division II Field Hockey Host Information

Miles Gallagher, Director of Athletics

Office: 717-871-7694 Cell: 717-278-3415 E-mail: miles.gallagher@millersville.edu

Peg Kauffman, Associate Director of Athletics – Tournament Director

Office: 717-871-7693 Cell: 717-413-9263 E-mail: pkuffman@millersville.edu

Ethan Hulsey, Director of Athletic Communications

Office: 717-871-4154 Cell: 717-875-5395 E-mail: Ethan.Hulsey@millersville.edu

Larry Earnesty, Associate Director of Athletics

Office: 717-871-5157 Cell: 717-682-7313 E-mail: Larry.Earnesty@millersville.edu

Shelly Behrens, Millersville University Head Field Hockey Coach

Office: 717-871-7680 Cell: 717-250-2339 E-mail: Shelly.Behrens@millersville.edu

Roberta Page, Director of Championships - NCAA

Office: 317-917-6493 Cell: 317-966-6489 E-mail: rpage@ncaa.org

Heather Wolfe, Head Athletic Trainer, Drug Testing Coordinator

Office: 717-871-4781 Cell: 302-723-6801 E-mail: Heather.Wolfe@millersville.edu

Donna Bazow, Administrative Assistant

Office: 717-871-7694 Cell: 717-682-4740 E-mail: Donna.Bazow@millersville.edu

Donna Eshleman, Athletic Operations, Equipment Manager

Office: 717-871-4230 Cell: 717-371-7709 E-mail: Donna.Eshleman@millersville.edu

University Police

717- 871- 4357



2019-20 DIVISION II FIELD HOCKEY COMMITTEE ROSTER

<p><u>Michael McFarland, Chair (Atlantic)</u></p> <p>Director of Athletics Bloomsburg University of Pennsylvania 400 East Second Street Bloomsburg, Pennsylvania 17815-1301 Office Phone: 570-389-4050 Email: mcfarland@bloomu.edu</p> <p>Term Expires: 9/1/2020</p>	<p><u>Kate Kinsley (East)</u></p> <p>Assistant Director of Athletics/Operations/ Head Field Hockey Coach Mercy College 555 Broadway Dobbs Ferry, New York 10522 Office Phone: 914-674-7211 Email: kkinsley@mercy.edu</p> <p>Term Expires: 8/31/2020</p>
<p><u>Julie Swiney (Atlantic)</u></p> <p>Head Field Hockey Coach Slippery Rock University 1 Morrow Way Slippery Rock, Pennsylvania 16057 Office Phone: 724-738-2786 Email: kkinsley@pace.edu</p> <p>Term Expires: 8/31/2022</p>	
<p><u>Roberta Page</u></p> <p>NCAA Director of Championships P.O. Box 6222 Indianapolis, Indiana 46206-6222 Phone: 317-917-6493 Email: rpage@ncaa.org</p>	<p><u>Leslie Havens</u></p> <p>NCAA Assistant Coordinator P.O. Box 6222 Indianapolis, Indiana 46206-6222 Phone: 317-917-6483 Email: lhavens@ncaa.org</p>



SECTION 2 – Championship Format

Bracket Format

The championship provides for a 6-team, single elimination tournament. First-round competition will be conducted on the campus of one of the competing institutions at two sites. The four advancing teams will compete at Millersville University.

The semifinal games will take place Friday, November 22, game times are 2 p.m. and 5 p.m. The championship game will be Sunday, November 24, at 1 p.m.

Determination of Home/Away Teams

For all rounds of competition, teams will be designated as home or visitor by the sport committee. Each team must have two sets of shirts and socks; one light set and one dark set. The home team shall wear the dark uniform color and the visiting team shall wear a light uniform in contrast with that of the home team. The games committee and umpires will have final approval.

Lineups

Game rosters will be submitted and exchanged with 30 minutes on the game clock prior to the start of play.

International Walk-Out

Teams are led onto the field in two lines by the two umpires. The umpires are first to be introduced. The captain of each team heads the line of players (both starters and non-starters). The umpires will stop midfield. At midfield, the teams, in single file, will turn 90 degrees and move toward their respective goals, ultimately forming a single file line at center field facing the direction as determined by the venue. The announcer then introduces the visiting team's non-starters, followed by the starters, assistant coach(es) and head coach. The announcer then introduces the home team using the same format. After both teams have been introduced and the national anthem has been played, the players should return to their respective benches to prepare for the start of the game.

Practices

Teams will not be allowed to practice on the competition field earlier than the day before the competition. Arrangements may be made to practice at an alternate facility two days before the competition, but the host institution is not obligated to assist with these arrangements.

Each team is allotted one hour and 15 minutes Thursday and Saturday. Practices will be closed and supervised by the games committee. The game clock will be used to time all practice sessions.

Pregame

All teams are guaranteed 52 minutes of warm-up on the game field for semi-final games, with all pregame warm-up activities confined to the half of the field that is assigned by the team's game bench. Interaction with the umpires can only occur at the scorer's table with an NCAA representative and both coaches present.

SECTION 3– Championship Operations

Hospitality

Light refreshments will be made available for participants and coaches in the locker rooms and team tents. There will also be refreshments available for media, SID's and NCAA staff/committee in the Hospitality tent.

National Anthem

The national anthem will be played by Millersville University Band/CD before the first game on Friday and before the championship game on Sunday.

Officials

Selection/Assignments. All umpires for all tournament games will be selected and assigned by the field hockey committee in coordination with the NCAA umpire manager.

Two umpires shall be assigned to each game; in addition, a table umpire will be assigned to each game and shall have supervision over the timer's and scorer's table, and ball persons. A minimum of six, adult ball persons shall be assigned to all championship games.

Post-championship Evaluations

The NCAA will send evaluations to head coaches and athletics directors via email after competition. It is important that we get your help in providing feedback. If you could also please share the survey link with your team, we would appreciate it. Your responses will be held in confidence and used only to enhance the championship in the future. The survey should take less than five minutes to complete.

Videotaping

Space will be available in front of canopies next to the press box for teams to film. The webstream of each game will be available via NCAA.com. If a team request to film from the end line they will need to provide the equipment and operator and upload the film on TeamXStream.

SECTION 4 – Competition Site

Athletic Training

Millersville University Athletic Trainers will be on-site throughout the event. Athletic trainers and access to the athletic training facilities will be available two hours prior to games and one hour prior to practices until 30 minutes after the last activity. A physician will be on-site for the duration of all contests. PowerAde, water, ice, and cups will be provided on the sideline during all games and practices. Emergency equipment will also be available at this location. We request that all teams provide their own taping supplies. If an athletic trainer will not be accompanying your team and taping/bracing is required please send a list of specific instructions to Host Athletic Trainer, Heather Wolfe.

Host Athletic Trainer will be:

Heather Wolfe

Heather.wolfe@millersville.edu

(302) 723-6801

Hospital Info:

Lancaster General Hospital

555 North Duke Street

Lancaster, PA 17602

(717) 544-5511

Competition Site Maps

Appendix E; please note that the playing field surface is FieldTurf.

Laundry Service

There is laundry service available free of charge. Services will be coordinated by Donna Eshleman. She can be contacted via e-mail: donna.eshleman@millersville.edu or phone (717) 371-7709.

Locker Rooms

Locker rooms will be provided each day. A game management staff member will be available to show you to your locker room throughout the tournament. Please note Millersville does not provide locks.

Parking

Buses will be directed to parking locations on site. Signage will be posted, and a staff member will meet you to assist with parking, show you to your locker room, and answer any questions you may have.

Please call Peg Kauffman at 717-413-9263 when you arrive on campus so that a staff member can meet you upon your arrival.

Reserved and VIP parking is located at Biemesderfer Stadium Lot (Officials and NCAA Committee).

Passes and Press Box

Additional passes will not be available. Every staff member, including coaches in the press box and Athletic Training staff, must have a sideline pass to go through the field gate. Event staff will be stationed at the gate checking for passes. Event credentials will be distributed at the coaches meeting.

SECTION 5 – Drug Testing

Student-athletes who compete in these championships may be subjected to drug testing in accordance with Bylaws 18.4.1.5 and 31.2.3, and may be determined to be ineligible as a result thereof. Only student-athletes who have consented in writing to such testing are initially eligible for these championships; and thereafter, student-athletes who are tested shall remain eligible only if they test negative.

SECTION 6– Expenses/Reimbursement

Per Diem

Per Diem will be paid for the allowable travel party. The per diem rate and allowable days can be found in the [NCAA travel policies](#).

TES System

Expense Reimbursement. Team expense reports should be filed online through the Travel Expense System (TES). The login information for the system is the same as that used for the Short’s travel portal. The system is located at the following website: <https://web1.ncaa.org/TES/exec/login?js=true>.

All institutions, including hosts, must complete the online reimbursement process in order to receive the appropriate reimbursement.

SECTION 7 – General Public

Banners and Artificial Noisemakers

No banners may be posted at the tournament other than the NCAA and approved media banners. Artificial noise makers, air horns, and electronic amplifiers are not permitted and shall be removed upon discovery.

Championship Merchandise

Merchandise will be available at the Marriott when teams check-in and inside of the complex one (1) hour prior to the first game. Participating teams will have the opportunity to preorder championship merchandise. Information regarding this process will be emailed prior to the championship.

Concessions

Concessions will be available during all games.

First Aid

The athletic training room is located inside Biemesderfer Stadium. Cups, water, and ice will be provided. A certified trainer will be at the medical tent on the field during and after all practices and games.

Hotels

Area hotels for parents and media:

Candlewood Suites – Lancaster W
100 S Tree Dr, Lancaster PA
717-537-2050

Tru by Hilton – Lancaster E
2320 Lincoln Hwy E, Lancaster PA
717-399-3100

Fairfield Inn & Suites by Marriott
150 Granite Run Dr, Lancaster PA
717-581-1800

Lancaster Marriott at Penn Square
25 S. Queen Street, Lancaster, PA
(717) 207-4086

Security

Security will be on-site and event staff will be positioned at each gate in order to control access appropriately.

Ticket Prices

Single Session

Adult- \$10

Student/Senior- \$5

Children 6 and under- \$2

Group Rate (10 minimum) - \$3

Gates open at 12:30 p.m., Friday November 22
Gates open at 11:30 a.m., Sunday November 24.

SECTION 8– Participant Expectations and Guidelines

Ethical Behavior by Coaches

Members of the coaching profession have certain inherent obligations and responsibilities to the profession, to the student-athletes and to all those with whom they come into contact. Coaches are expected to be role models who conduct themselves with integrity and high ethical standards at all times.

The words and actions of a coach carry tremendous influence, particularly on the young people under his or her direction. It is, thus, imperative that he or she demonstrate and demand high principles of sportsmanship and ethical behavior.

Misconduct

Misconduct in an NCAA championship is any act of dishonesty, unsportsmanlike conduct, unprofessional behavior or breach of law occurring incident to, en route to, from or at the locale of the competition or practice that discredits the event or intercollegiate athletics. Members of the coaching staff or other representatives of participating institutions or conferences shall not make public statements critical of officiating in any NCAA championship event. Failure to comply with this policy may subject the individual, institution or conference to the misconduct provisions of Bylaw 31.1.8

Red Cards

A player, bench personnel or coach receiving a red card shall be ejected from the game, shall leave the premises of the field of play and shall sit out the next regularly scheduled game, including postseason games. Should a player, bench personnel or coach receive a red card in the last game of the season (including post season games) the suspension would carry-over to the first game of the following season (exhibitions and/or scrimmages do not satisfy the suspension). A coach serving a game suspension shall be restricted to the designated spectator area and is prohibited from any communication or contact, direct or indirect, with his or her team, assistant coaches and/or bench personnel from the start of the contest to its completion.

Sportsmanship

The primary goal of the rules is to maximize the safety and enjoyment of the student-athlete. Sportsmanship is a key part of that goal. Sportsmanship should be a core value in behavior of players and bench personnel, in crowd control by game management and in the officials' proper enforcement of the rules governing related actions.

Sports Wagering

The NCAA defines sports wagering as putting something at risk – such as an entry fee or a wager – with the opportunity to win something in return. The NCAA opposes all forms of legal and illegal sports wagering on college sports. Student-athletes and athletics administrators cannot place a sports wager for any NCAA-sanctioned sport. This includes wagering on the intercollegiate, amateur or professional level.

A student-athlete involved in sports wagering on the student-athlete's institution permanently loses all remaining regular-season and postseason eligibility in all sports. A student-athlete who is involved in any sports wagering activity that involves college sports or professional athletics, through Internet gambling, a bookmaker, a parlay card or any other method employed by organized gambling, will be ineligible for all regular-season and postseason competition for at least one year.

In championships in which a bracket format is used, student-athletes, coaches and administrators may not participate in bracket competitions where there is both a required entry fee and an opportunity to win a prize. Student-athletes and administrators may participate under current NCAA rules, in bracket contests where there is no entry fee but a possibility of winning a prize. Some NCAA member schools, however, have chosen to ban student-athletes from participating in these types of bracket contests.

Tobacco Ban

The use of tobacco products is prohibited by all game personnel (e.g., coaches, trainers, managers and game officials) in all sports during practice and competition. Uniform penalties (as determined by the applicable rules-making committees and sports committees with rules-making responsibilities) shall be established for such use.

The use of tobacco products by a student-athlete is prohibited during practice and competition. A student-athlete who uses tobacco products during a practice or competition shall be disqualified for the remainder of that practice or competition.

SECTION 9 – Travel Party

Band/Spirit Squad/Mascots

Spirit squads, not to exceed 12 in number, plus the mascot shall be admitted, if in uniform, via the gate list. A maximum of 25 band members, who are in uniform and performing at the championship, will not be charged admission. Information as to whether or not spirit squad or band members will need admission to the competition should be provided at the coaches meeting.

Bench Passes/Assignments

NCAA-provided credentials will be distributed on Thursday and event staff will monitor bench access. The home team/higher seed will be assigned the bench to the right of the scorer's table.

Bench Size

Benches will be set for 30 people (per team) in the championship. The games committee may issue a maximum of three temporary field-access credentials to each of the participating teams. This temporary field-access credential is for purposes of fulfilling responsibilities at news conferences as well as pre- and postgame activities only (non-transferable). A temporary field pass does not provide access to the venue. A ticket will need to be purchased. These individuals may not be added to the bench party. The institution's mascot may not be counted nor included in the bench party. Up to a maximum of two credentials outside of the travel party will be provided to the team doctor or other medical professionals. The event manager may provide additional chairs for security representatives.

Lodging – Team and Officials

Team Lodging

Lancaster Marriott at Penn Square

Contact: Lindsey Tellez, Event Manager

Lindsey.tellez@interstatehotels.com

25 S. Queen Street

Lancaster, PA 17603

(717) 207-4086

Officials Lodging:

Cork Factory Hotel

Contact: Jenn Mercandetti

jenny.mercandetti@corkfactoryhotel.com

480 New Holland Avenue

Lancaster, PA 17602

(717) 735-2075 ext. 606

Squad Size

Teams participating in the championship are limited to a maximum of 24 players in uniform for any one contest, including warm-up. The travel party roster may change between rounds; however the institution should submit copies of new travel party/line-up form 30 minutes prior to the start of the game. Players must be designated before the game. After the game starts, no replacements will be permitted for any reason. An institution that is advised it is in violation of this regulation and does not promptly conform to it shall automatically forfeit the competition. There shall be no inordinate delay of the competition to allow the institution to conform to the rule. Only those 24 players and other authorized, credentialed personnel will be allowed on the field.

Travel Party Size

The official travel party is 30.

Banquet

The banquet will be held on Thursday, November 21. The reception starts at 5:30 pm at the Ware Center, 42 N. Prince Street, Lancaster Pa 17603. Dinner will be served at 6 pm. Dress is business casual. Please refer to Appendix H for walking directions.

Additional Award Ordering

Additional awards may be ordered after the championship. An institution may only order the award(s) that their team/individual received at the championship. You may submit the additional award(s) order at the following link: <http://www.mtmrecognition.com/ncaa/>.

All-Tournament

The national committee will select an all-tournament team from the participants at the site of the finals. Eleven players will be selected - 10 field players and a goalkeeper. The NCAA office will order all-tournament team plaques for each team member after the championship and will ship these to the appropriate institution.

Elite 90 Award

The Elite 90 award is presented to the student-athlete with the highest cumulative grade-point average competing at the finals site for each of the NCAA's 90 championships. Each institution that has at least one student-athlete qualify for the finals round/site is eligible to nominate a student-athlete to win the award for that championship. All ties are broken by number of credits completed. All documents, including deadlines and nomination forms can be obtained at the following location [http://www.ncaa.org/about/resources/events/awards/elite-90-academic-recognition-award- program](http://www.ncaa.org/about/resources/events/awards/elite-90-academic-recognition-award-program). You must be logged into the site to access the page.

The submission deadline for nomination for the NCAA Division II Field Hockey Championship is **12 p.m. Eastern, Tuesday, November 19.**

Participation Awards

The NCAA, in conjunction with MainGate, Inc., will communicate directly with participating institutions' head coaches regarding the ordering and delivery process of participation awards (Appendix I).

Within 10 business days of qualification, you will receive an email. The email (Main Gate) will provide details about the ordering process, along with a unique Certificate Code which can be redeemed only at NCAA-Awards.com; valid for one participation award per member of your travel party. In order to ensure that each participant receives his or her award, a member of your administration must place your team's order, including size information, at NCAA-Awards.com using your Certificate Code. Contact your Championship Manager about providing sample jackets for sizing. If you would like to purchase additional awards you will have the opportunity to do so online via personal credit card. Participation award items will be sent to your institution for distribution to your student-athletes within three to four weeks after your order is placed. If you do not receive information for ordering awards within two weeks of the conclusion of the championship, please contact Erin Brown (317.260.2538 or ebrown@maingateinc.com) or your NCAA championship manager.

Team Awards

Each team in the championship will receive a team trophy. Each member of the national championship team will receive a t-shirt and hat. An awards ceremony will occur after the championship game on Sunday.

Logo Policy

[Reference: Bylaw 12.5.4 in the NCAA Division I and II Manuals, and Bylaw 12.5.3 in the NCAA Division III Manual.]

The provisions of Bylaw 12.5.4 (Divisions I and II) or Bylaw 12.5.3 (Division III) indicate that an institution's official uniform and all other items of apparel (e.g., socks, headbands, T-shirts, wristbands, visors or hats, and towels) that are worn by student-athletes in competition may bear a single manufacturer's or distributor's normal trademark, not to exceed 2 1/4-square inches, including any additional material (e.g., patch) surrounding the normal trademark or logo. The logo or trademark must be contained within a four-sided geometrical figure (i.e., rectangle, square, parallelogram).

In addition, an institution's official uniform cannot bear a design element similar to the manufacturer's that is in addition to another logo or that is contrary to the size restrictions.

A student-athlete representing an institution in intercollegiate competition is limited to wearing apparel items that include only the logo (not to exceed 2 1/4-square inches) of an apparel manufacturer or distributor. The student-athlete may not wear any apparel that identifies any other entity, other than the student-athlete's institution.

These restrictions apply to all apparel worn by student-athletes, and any and all credentialed personnel in the bench area during the conduct of competition, which includes any practices and pregame or postgame activities.

This bylaw will be strictly enforced at all NCAA championships and the names of individuals and institutions that are not in compliance with this bylaw shall be forwarded to the NCAA enforcement staff. Non-compliance with this legislation could result in loss of eligibility, forfeiture of points earned by those ineligible student-athletes and adjustment of team standings.

Patches

At the championship site, each team will receive 24 NCAA blue disk patches for their student-athletes per game. The preferred location for the patch is on the upper left corner of the jersey; however, the left sleeve is an acceptable alternative.

Markets, Restaurants and Local Sponsors (Lancaster, PA)

Annie Bailey’s Irish Pub and Restaurant:	28 East King St, Lancaster PA 17602
College Corner Café:	931 Harrisburg Avenue, Lancaster, PA 17603
Federal Taphouse:	201 North Queen Street, Lancaster, PA 17603
Fresh Farms Café:	621 Harrisburg Avenue, Lancaster, PA 17603
Iron Hill Brewery and Restaurant:	781 Harrisburg Avenue, Lancaster PA 17602
Isaac’s Downtown:	25 North Queen Street, Lancaster, PA 17603
Jimmy John’s:	38 North Queen Street. Lancaster, Pa
Lancaster Brewing Company:	302 North Plum Street
Lancaster Dispensing Company:	35 N Market St, Lancaster, PA 17603
Max’s Eatery:	38 W King St Lancaster PA 17603
Quips Pub:	457 New Holland Ave, Lancaster PA 17602
Red Rose Tavern:	300 West James Street, Lancaster, PA 17603
Roburrito’s Famous Burritos:	227 North Prince Street, Lancaster PA 17603
Yorgos Restaurant:	66 North Queen Street, Lancaster PA 17603
Silantra Asian Kitchen:	101 E King St, Lancaster, PA 17602
Catalina’s Sports Bar and Grill:	38 W Orange St, Lancaster, PA 17603
Tropical Smoothie:	341 Comet Drive, Millersville, PA 17551
Wayback Burger:	343 Comet Drive, Millersville, PA 17551
Nino’s Pizza:	361 Comet Drive, Millersville, PA 17551
Sheetz:	1790 Millersville Road, Millersville, PA 17551
Two Cousins Pizza:	115 Manor Ave. Millersville, PA 17551
Copper Hill:	1 Crossland Pass, Millersville, PA 17551
Jack’s Family Tavern:	15 S. Prince Street, Millersville, PA 17551

AGENDA

2019 NCAA DIVISION II FIELD HOCKEY CHAMPIONSHIP COACHES MEETING

An Administrative (pregame) meeting involving the coaches, NCAA committee representatives and staff liaison, and tournament director will be held prior to the championship. After introductions of persons present, the tournament director may have remarks. Either the NCAA staff liaison or the national committee chair will conduct this meeting.

1. Welcome and congratulations.
2. Introductions (name, title, affiliation).
3. Review schedule of activities, including game schedule and pregame itinerary.
4. Questions regarding NCAA Rules Modifications, as needed.

Uniforms

Game shirts must have a minimum of three-inch numbers on the front and six-inch numbers on the **back**.

The numbers must be of a color clearly contrasting with the uniform top. Goalkeepers shall have their own uniform number. The color of the jersey must be different in color from field players of both teams; goalkeepers on opposing teams may wear the same colored jersey.

Game shirts worn by designated home teams must be predominately dark in color, and game shirts worn by designated away teams must be predominately light or white.

A team whose game shirts do not meet the above requirements will be given the opportunity to change game shirts. A team that is unable or chooses not to change will be assessed a yellow card. During NCAA championship play, a yellow card will automatically be assessed. The penalty shall be served by the team captain.

Turtlenecks and/or tights worn by team members must be identical in color. Turtlenecks worn by designated home teams must be dark in color (e.g., black turtlenecks with navy game shirts) and turtlenecks worn by designated away teams must be light in color (e.g., white turtlenecks with yellow game shirts). Headgear (i.e., hats, headbands) worn by team members must be identical in color.

Team members must wear like-colored socks and/or shin guards that cover the back and front of **the lower leg (ankle to knee).**

The color of the socks and/or shin guards must be consistent with team uniform colors and of a contrasting color of the opposing team. It is the responsibility of the home team to wear socks and/or shin guards in clear contrast to those worn by the visiting team. In the event that the colors are not contrasting the home team will be required to change.

Red Card:

A player, bench personnel or coach receiving a red card shall be ejected from the game, shall leave the premises of the field of play and shall sit out the next regularly scheduled game, including postseason games. Should a player, bench personnel or coach receive a red card in the last game of the season (including post season games) the suspension would carry-over to the first game of the following season (exhibitions and/or scrimmages do not satisfy the suspension). A coach serving a game suspension shall be restricted to the designated spectator area and prohibited from any communication or contact, direct or indirect, with his or her team, assistant coaches and/or bench personnel from the start of the contest to its completion.

Visible Clocks

The Visible Clock will be the Official Game Clock. The On-Field Officials or Alternate Official shall keep a back-up clock. The time kept by the On-Field Officials or Alternate Official will become the official time in the event of a clock malfunction.

Game Ball

The game ball should be white unless there are special circumstances and both coaches agree to use a different-colored ball. If an agreement cannot be reached, the color of the game ball shall be white.

Walk-Out

Teams are led onto the field in two lines by the three umpires. The umpires are the first to be introduced. The captain of each team heads the line of players (both starters and non-starters). The umpires will stop at midfield. At midfield, the teams, in single file, will turn 90 degrees and move toward their respective goals, ultimately forming a single file line at center field facing the direction as determined by the venue. The announcer then introduces the visiting team's non-starters, followed by the starters, assistant coach(es) and head coach. The announcer then introduces the "home" team using the same format. After both teams have been introduced and the national anthem has been played, the players should return to their respective benches to prepare for the start of the game.

5. Determine uniform colors.

Student-athletes should remain in uniform until they return to the locker room.

12.5.4 Use of Logos on Equipment, Uniforms and Apparel. A student-athlete may use athletics equipment or wear athletics apparel that bears the trademark or logo of an athletics equipment or apparel manufacturer or distributor in athletics competition and pre- and postgame activities (e.g., celebrations on the court, pre- or postgame news conferences), provided the following criteria are met. (Violations of this bylaw shall be considered institutional violations per Constitution 2.8.1; however, they shall not affect the student-athlete's eligibility): *(Revised: 1/11/94, 1/10/95, 1/9/96 effective 8/1/96)*

Athletics equipment (e.g., shoes, helmets, baseball bats and gloves, batting or golf gloves, hockey and lacrosse sticks, goggles and skis) shall bear only the manufacturer's normal label or trademark,

as it is used on all such items for sale to the general public; and
The student-athletes institution's official uniform (including numbered racing bibs and warm-ups) and all other items of apparel (e.g., socks, head bands, T-shirts, wrist bands, visors or hats, swim caps and towels) shall bear only a single manufacturer's or distributor's normal label or trademark (regardless of the visibility of the label or trademark), not to exceed 2 1/4 square inches in area (i.e., rectangle, square, parallelogram) including any additional material (e.g., patch) surrounding the normal trademark or logo. *(Revised: 1/11/94, 1/10/95)*

6. Official clock.

7. Game ball – smooth.

8. Misconduct policies.

Misconduct in an NCAA championship is any act of dishonesty, unsportsmanlike conduct, unprofessional behavior or breach of law occurring incident to, en route to, from or at the locale of the competition or practice that discredits the event or intercollegiate athletics. **Criticism of Officials.** Members of the coaching staff or other representatives of participating institutions or conferences shall not make public statements critical of officiating in any NCAA championship event. Failure to comply with this policy may subject the individual, institution or conference to the misconduct provisions of Bylaw 31.1.8.

9. Squad size (24) and traveling party (30) policies.

10. Awards.

Trophies and individual awards.

All-tournament team (plaques mailed to institution).

Awards ceremony.

Elite 90.

11. Review locker room assignments.

12. Filming and videotaping.

13. Postgame interviews/coolingoff period.

14. Medical arrangements.

15. Drug testing.

16. Parking procedures.

17. Adjournment.

	Student-athletes not in uniform		
Head Coach		Staff	
Asst. Coach		Staff	
Staff		Staff	

Schedule of Events

Wednesday, November 20

Teams arrive

8:00 PM – Coaches meeting – Conestoga Room at Marriott.

Thursday, November 21, (Closed practices)

10 a.m. -11:15 a.m.	Higher seed of semifinal game one
11:30 a.m. -12:45 p.m.	Lower seed of semifinal game one
1 p.m. – 2:15 p.m.	Higher seed of semifinal game two
2:30 p.m. - 3:45 p.m.	Lower seed of semifinal game two
5:30 p.m.	Banquet - Ware Center, Lancaster 42 N. Prince St, Lancaster PA 17603

**Please note community service will take place on Thursday, time TBD.*

Friday, November 22

12:30 p.m.	Gates Open
1 p.m.	Warm-up
2 p. m.	Semifinal #1
4 p.m.	Warm-up
5 p.m.	Semifinal #2

Saturday, November 23 (Closed practice)

11a.m.-12:15 p.m.	Winner of Semifinal 1
12:30 - 1:45 p.m.	Winner of Semifinal 2
4 p.m.	NFHCA Senior All-Star warm-up
5 p.m.	NFHCA Senior All-Star game

Sunday, November 24

11:30 a.m.	Gates Open
12:00 p.m.	Warm-up
1:00 p.m.	Championship Game



Game Time Sheets

Pregame

Friday, November 22

Prior to game	Time	Activity	Scoreboard
60 minutes	1:00	Official Pregame Warm-up Begins	52:00
	1:52	Clear the field	00:00
6 minutes	1:56	Captains and officials meet at centerfield	
00:00		<u>Introduction of Teams via International walkout</u>	
2 minutes	1:58	National Anthem	00:00
0 minutes	2:00	Game Begins	00:00

Second Game of Session

Prior to game	Time	Activity	Scoreboard
60 minutes	4:00	Official Pregame Warm-up Begins	52:00
8 minutes	4:52	Clear the field	00:00
		Captains and officials meet at centerfield	
6 minutes	4:54	<u>Introduction of Teams via international walkout</u>	00:00
0 minutes	5:00	Game begins	00:00

Sunday, November 24

Prior to game	Time	Activity	Scoreboard
60 minutes	Noon	Official Pregame Warm-up Begins	52:00
8 minutes	12:52	Clear the field	00:00
		Captain and officials meet at centerfield	
6 minutes	12:54	<u>Introduction of Teams via international walkout</u>	00:00
2 minutes	12:58		
0 minutes	1:00	Game begins	00:00

*All games and practices at Biemesderfer Stadium

Your compliance with above schedule is imperative for proper game management operations. Times and activities suggested by NCAA. Thank you.

Millersville University

MAP OF CAMPUS



UNIVERSITY CONTACT INFORMATION

www.millersville.edu
 General: 717-871-4636
 Undergraduate Admissions: 717-871-4625 or 1-800-MU-ADMIT
 Graduate Admissions: 717-871-4723 (GRAD)

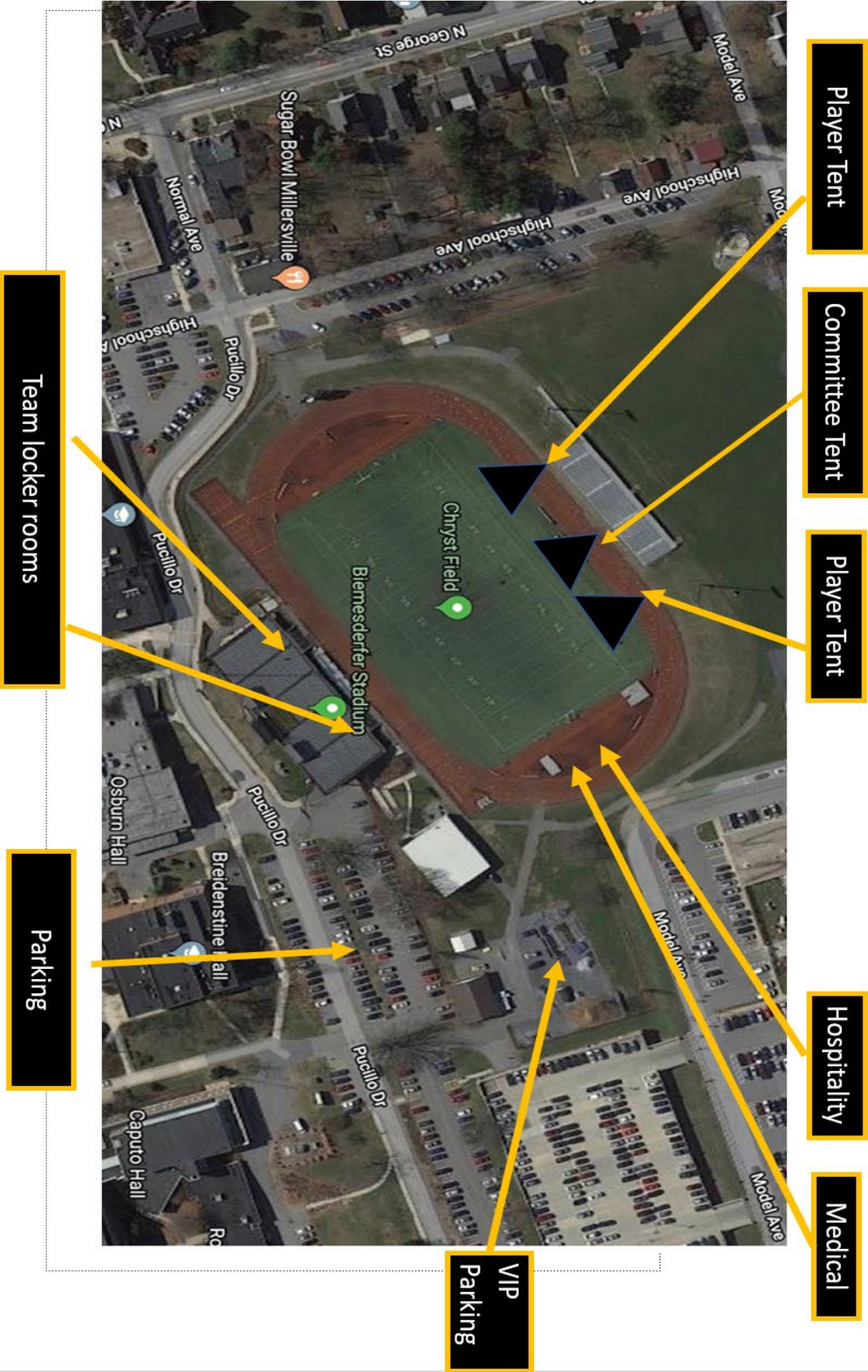
53 Lombardo Welcome Center

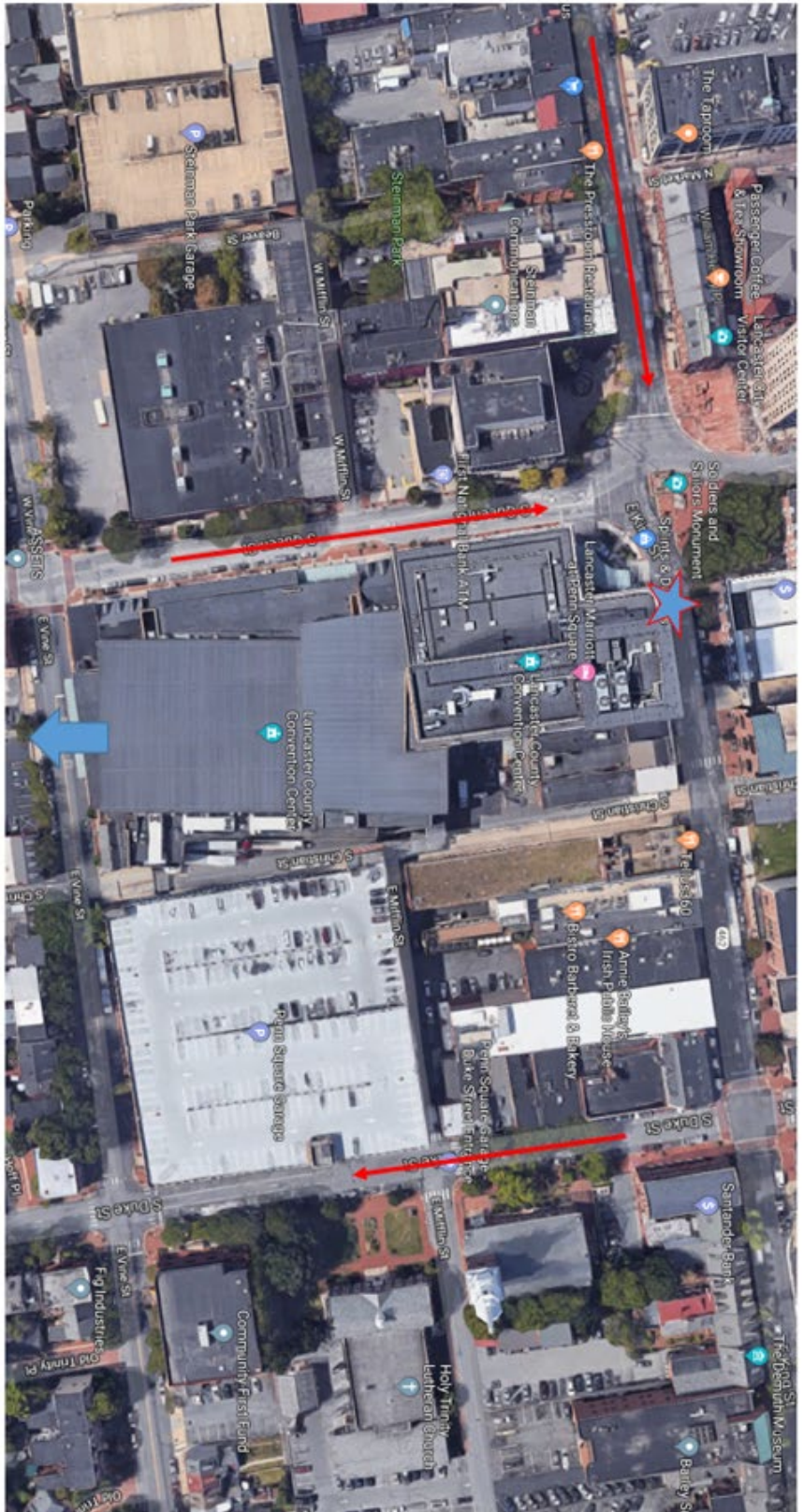
Admissions, Zero Energy Building

LEGEND

- Academic Facilities
- Administrative Buildings
- Residence Halls
- Athletic Facilities
- Other Facilities
- Parking Garages

Adams House	45	Rair House	86	Oryst Hall	30	Gerhart Hall	47	Lombard-Wikern Center	55	Palmer Building	84	Riggs Courte	92	Tin Shop	37
Allegheny House	70	Boyer Building	25	Columbia House	30	Goodner Hall & Bolger	54	Luzerne Building	69	Perry House	66	(not shown on map)		Ware Visual &	93
Armstrong House	71	Breidestine Hall	65	Cumberland House	46	Conference Center	46	Lyle Hall	20	Philadelphia House	26	Schoy/Hill House	17	Performing Arts Center	
Bard Practice Field	2	Brooks Field	24	Daghigh House	68	Hash Building	42	McConery Hall	74	Pike House	18	Shenk's Hall	60	(not shown on map)	
Bard Hall	14	Brooks Hall (Gymnasium)	23	DeBauer House	39	Healthy Living Apartments	59	McConery Tennis Courts	75	Pike Barn	88	(Affiliated Housing)	90	42M, Prince St., Lancaster, PA	
Barker Hall	43	Brookwood Court Apartments	58	Dilworth Building	34	Huntingdon House	48	Mercer House	15	Prince Street Garage	10	Schubert Field	90	Water tower	1
Bedford House	49	(Affiliated Housing, not shown on map)		Duncan Alumni House	31	Inventor's Workshop	22	Mifflin House	9	Purple Gymnasium	4	Spencer House	29	Washington House	52
Bennett 1, Cooper Park (Baseball Field)	5	Brosnan Hall	83	Duchter Hall	36	Jefferson Hall	3	Montgomery House	87	Purple Gymnasium	91	Stayer Hall	78	Wickerman Hall	21
Berks House	28	Camden House	51	East Village	76	Lancaster House	32	Monitor House	50	Purple Gymnasium	79	Student Memorial Center	19	Water Visual &	12
Bienstocker Center	35	Caputo Hall	80	Francis & McElroy Library & Learning Forum (at Center Hall)	38	Lancaster House (Police)	11	Nickel House	82	Rehder Hall (Affiliated Housing)	89	Suan 2, Luck Hall	63	Werner Building	77
Bienstocker Stadium & Christ Field	61	Carper Training Center	62	Franklin House	44	Lehigh Hall	27	Northington House	16	Roddy Hall	57	Susquehanna House	73	(Health Services)	41
Bishop Service Building	85	Cherif House	33	Fulton House	47		13	Northernland House	6		81	Tanger House	22	York House	8

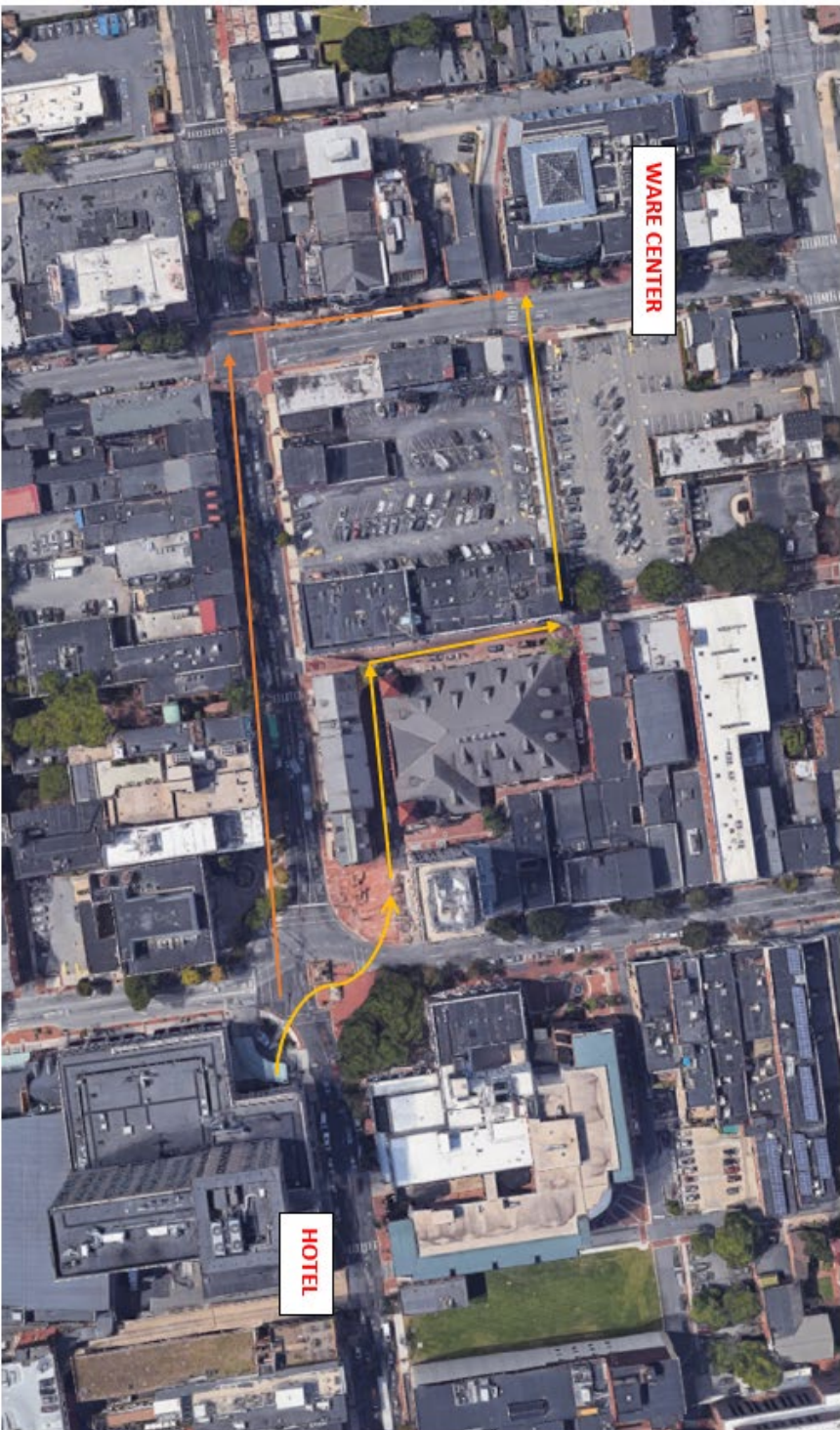




The Lancaster Marriott at Penn Square is located at 25 S. Queen Street, Lancaster PA 17603, on the southeast corner of Queen Street and King Street. Queen Street is one-way going north, and King is one-way going east. Unloading is at the first five spaces on the right side of East King Street, directly in front of the hotel. Do not bring the buses into the valet parking area at the front corner of the building, as they will not fit. Bus parking is at the rear of the hotel/convention center off Vine Street.

Bus loading/unloading: 

Bus parking: 



Directions from the hotel to the banquet at the Ware Center, 42 N Prince St, Lancaster PA 17603

- ← From the front entrance of the hotel - cross over the main intersection diagonally. Go between the two buildings to the end and turn right. When you reach the parking lot turn left. Walk straight until you cross the road at the crosswalk. The entrance to the Ware Center is on the right.
- ← You may also travel west on King until the intersection with Prince and turn right.



HOW TO GET YOUR **Student-Athlete Participation Awards**

For 2019-2020, an online gift-suite will serve as the participation awards provided to members of the official travel party of institutions that advance to the championship final sites.

After the championship, MainGate will send the head coach an email providing ordering process details, along with a unique Certificate Code (valid for one participation award per member of your official travel party) that can be redeemed only at www.NCAA-Awards.com. In order to ensure that each participant receives an award, a member of your administration must place your team's order, including size information, at NCAA-Awards.com using your Certificate Code.

Your institution may select different items per participant; men's and women's sizes are available for apparel items. If you would like to purchase additional awards, you will have the opportunity to do so online via personal credit card at the end of the checkout process.

Participation award items will be sent to your institution for distribution to your student-athletes within four to six weeks after your order is placed. If you do not receive information for ordering awards within two weeks of the conclusion of the championship please contact Erin Hannoy ehannoy@maingateinc.com, MainGate Customer Service (866-945-7267) or the NCAA championship manager.

Please add ehannoy@maingateinc.com to your address book to allow us to send you emails.



Place your order at NCAA-Awards.com

