

2023-24 NCAA Roller 1



Oil Pattern Distance:	34 Feet	Reverse Brush Drop:	34 Feet	Oil Per Board:	40 uL
Forward Oil Total:	15.92 mL	Reverse Oil Total:	9 mL	Volume Oil Total:	24.92 mL
Forward Boards Crossed:	398 Boards	Reverse Boards Crossed:	225 Boards	Total Boards Crossed:	623 Boards

	Start	Stop	Loads	Speed	Crossed	Start	End	Feet	T.Oil
1	2L	2R	2	14	74	0.0	1.9	1.9	2960
2	5L	5R	1	14	31	1.9	3.8	1.9	1240
3	6L	6R	3	14	87	3.8	9.7	5.9	3480
4	7L	7R	4	14	108	9.7	17.6	7.9	4320
5	8L	8R	3	18	75	17.6	25.2	7.6	3000
6	9L	9R	1	18	23	25.2	27.7	2.5	920
7	2L	2R	0	22	0	27.7	34.0	6.3	0

Forward	Reverse	More
---------	---------	------

	Start	Stop	Loads	Speed	Crossed	Start	End	Feet	T.Oil
1	2L	2R	0	22	0	34.0	24.0	-10.0	0
2	7L	7R	1	22	27	24.0	20.9	-3.1	1080
3	6L	6R	1	22	29	20.9	17.8	-3.1	1160
4	5L	5R	2	22	62	17.8	11.6	-6.2	2480
5	4L	4R	1	18	33	11.6	9.1	-2.5	1320
6	2L	2R	2	18	74	9.1	4.0	-5.1	2960
7	2L	2R	0	18	0	4.0	0.0	-4.0	0

Forward	Reverse	More
---------	---------	------

Conditioner: Type
In or Select One

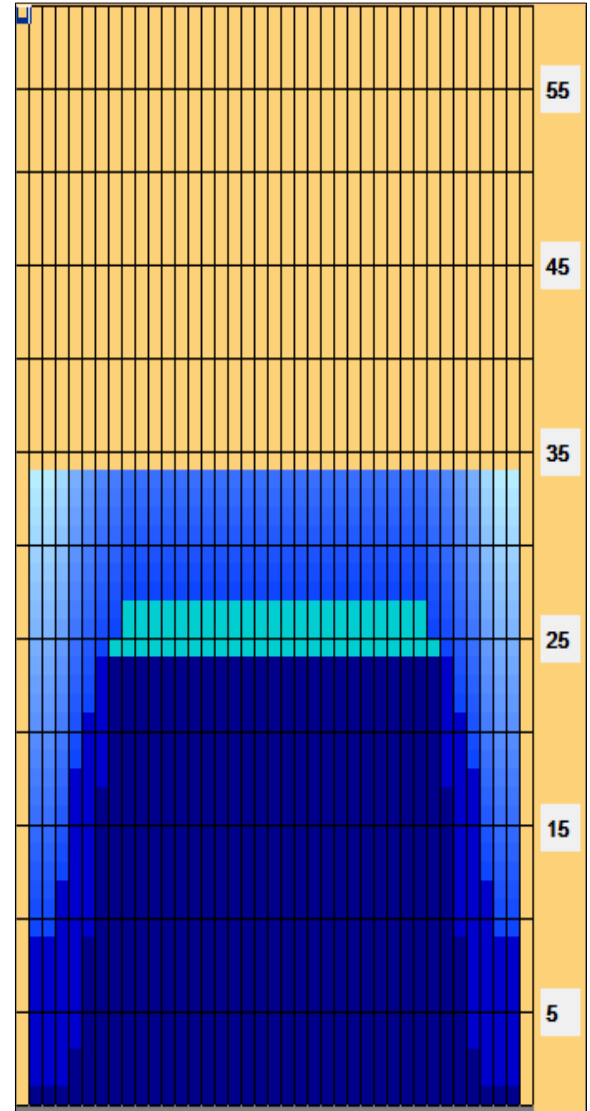
TransferType:
Type In or Select
One

Forward

Reverse

Combined

Buff



Item	3L-7L:18L-18R	8L-12L:18L-18R	13L-17L:18L-18R	18L-18R:17R-13R	18L-18R:12R-8R	18L-18R:7R-3R
Description	Outside Track:Middle	Middle Track:Middle	Inside Track:Middle	Middle:Inside Track	Middle:Middle Track	Middle:Outside Track
Track Zone Ratio	2.28	1.01	1	1	1.01	2.28

