

2024-25 NCAA Dual Transfer 1



| | | | | | |
|-------------------------|------------|-------------------------|------------|-----------------------|------------|
| Oil Pattern Distance: | 34 Feet | Reverse Brush Drop: | 34 Feet | Oil Per Board: | 50 uL |
| Forward Oil Total: | 17.7 mL | Reverse Oil Total: | 7.15 mL | Volume Oil Total: | 24.85 mL |
| Forward Boards Crossed: | 354 Boards | Reverse Boards Crossed: | 143 Boards | Total Boards Crossed: | 497 Boards |

| | Start | Stop | Loads | Speed | Crossed | Start | End | Feet | T.Oil |
|---|-------|------|-------|-------|---------|-------|------|------|-------|
| 1 | 2L | 2R | 2 | 14 | 74 | 0.0 | 1.9 | 1.9 | 3700 |
| 2 | 4L | 4R | 1 | 14 | 33 | 1.9 | 3.8 | 1.9 | 1650 |
| 3 | 5L | 5R | 3 | 18 | 93 | 3.8 | 11.4 | 7.6 | 4650 |
| 4 | 6L | 6R | 2 | 18 | 58 | 11.4 | 16.5 | 5.1 | 2900 |
| 5 | 8L | 8R | 2 | 18 | 50 | 16.5 | 21.6 | 5.1 | 2500 |
| 6 | 9L | 9R | 2 | 18 | 46 | 21.6 | 26.7 | 5.1 | 2300 |
| 7 | 2L | 2R | 0 | 22 | 0 | 26.7 | 34.0 | 7.3 | 0 |

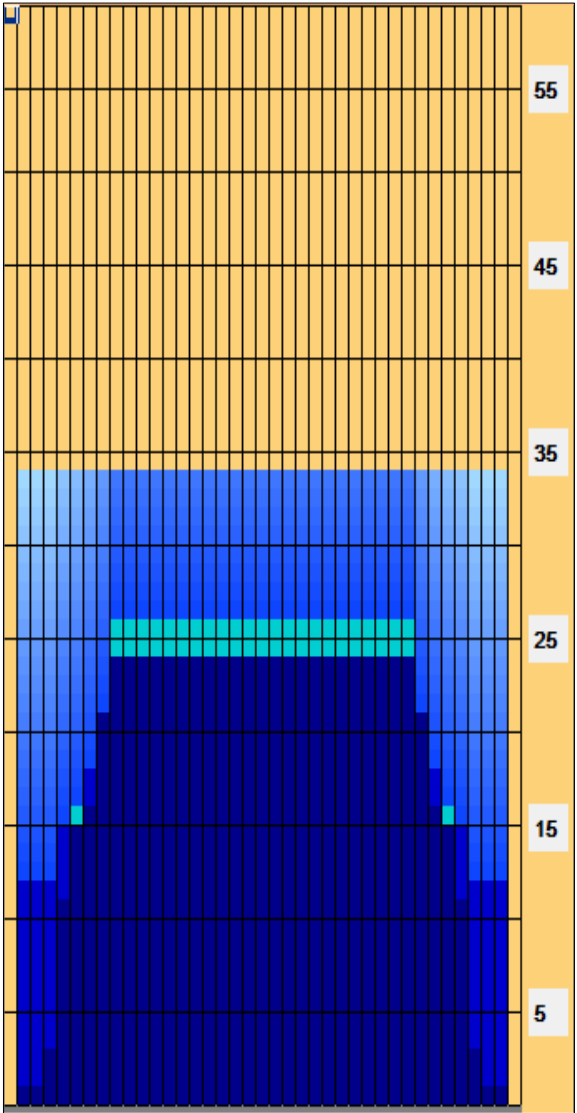
Forward Reverse More

| | Start | Stop | Loads | Speed | Crossed | Start | End | Feet | T.Oil |
|---|-------|------|-------|-------|---------|-------|------|-------|-------|
| 1 | 2L | 2R | 0 | 22 | 0 | 34.0 | 24.0 | -10.0 | 0 |
| 2 | 9L | 9R | 1 | 22 | 23 | 24.0 | 20.9 | -3.1 | 1150 |
| 3 | 8L | 8R | 1 | 22 | 25 | 20.9 | 17.8 | -3.1 | 1250 |
| 4 | 7L | 7R | 1 | 22 | 27 | 17.8 | 14.7 | -3.1 | 1350 |
| 5 | 5L | 5R | 1 | 18 | 31 | 14.7 | 12.2 | -2.5 | 1550 |
| 6 | 2L | 2R | 1 | 18 | 37 | 12.2 | 9.7 | -2.5 | 1850 |
| 7 | 2L | 2R | 0 | 18 | 0 | 9.7 | 0.0 | -9.7 | 0 |

Forward Reverse More

Conditioner: Type In or Select One
TransferType: Type In or Select One

- Forward
- Reverse
- Combined
- Buff



| Item | 3L-7L:18L-18R | 8L-12L:18L-18R | 13L-17L:18L-18R | 18L-18R:17R-13R | 18L-18R:12R-8R | 18L-18R:7R-3R |
|------------------|----------------------|---------------------|---------------------|----------------------|---------------------|----------------------|
| Description | Outside Track:Middle | Middle Track:Middle | Inside Track:Middle | Middle: Inside Track | Middle:Middle Track | Middle:Outside Track |
| Track Zone Ratio | 2.36 | 1.04 | 1 | 1 | 1.04 | 2.36 |

