

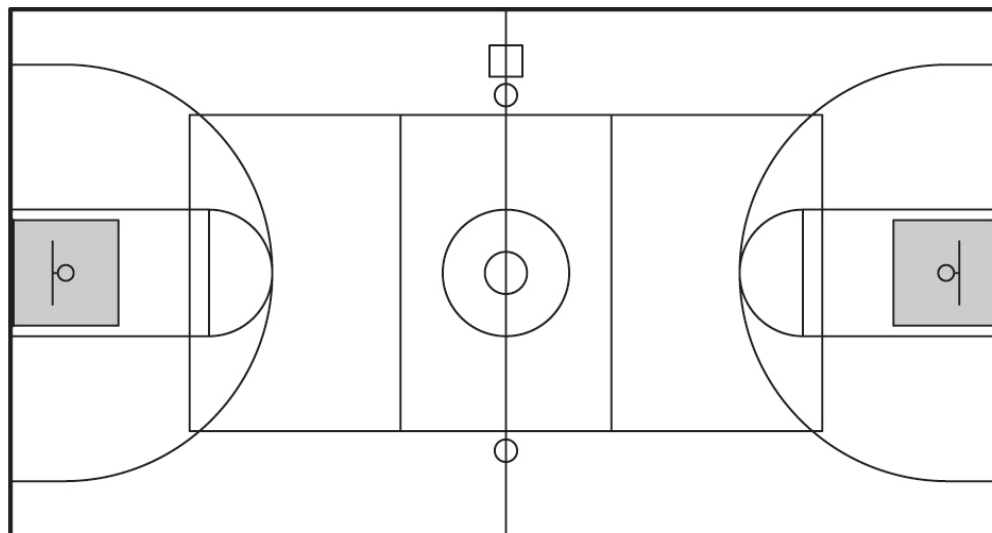


Best Lighting Practices: Volleyball *Streaming Broadcast (Intercollegiate Play)*

Summary: Following these recommended best practices will help ensure quality of light needed for the safety of participants and the enjoyment of spectators, as required.

Horizontal light levels: 80 footcandles
Horizontal uniformity: 2.0:1
Grid spacing: 10 ft x 10 ft

Typical facility layout:



↑
glare at net

1. For new facilities or upgrades, it is recommended to consult a lighting professional for optimal luminaire placement and catwalk locations.
2. As a general rule, due to mounting heights, lower wattage luminaires are used, commonly 1000 watt.
3. No luminaires are recommended in shaded areas directly aimed to the field of play.
4. Competition is typically held at the same venue as basketball.