



# Lighting Performance Checklist: Basketball

Prior to being approved for a televised event, facility must submit this checklist during the championship process to the championship administrator. Phone: 317/917-6222.

Inspection must be completed by a qualified lighting technician using a light meter calibrated within the last 12 months.

Press "TAB" to navigate to cells to enter required data. Average light levels and uniformity values automatically calculate when data is entered from light readings at each point on the court.

Light Levels Taken In:  Footcandles  Lux

Date of Inspection: \_\_\_\_\_ Inspected By: \_\_\_\_\_

College/Organization Name: \_\_\_\_\_

College/Organization Contact: \_\_\_\_\_

Telephone: \_\_\_\_\_ Email: \_\_\_\_\_

Facility Address: \_\_\_\_\_ City, State, Zip: \_\_\_\_\_

### Notes:

Grid court as shown on the drawing below. Readings are taken in the middle of each square with light meter held 36 inches above ground, pointing up.

Number of grid points will vary depending on court size and layout.

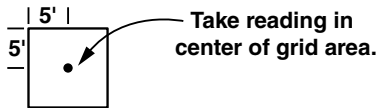
To obtain average light level value:

1. Record light level readings within each square
2. Total all readings, divide by number of grid readings taken

To obtain uniformity ratio:

1. Divide highest (maximum) light level reading by the lowest (minimum) light level reading

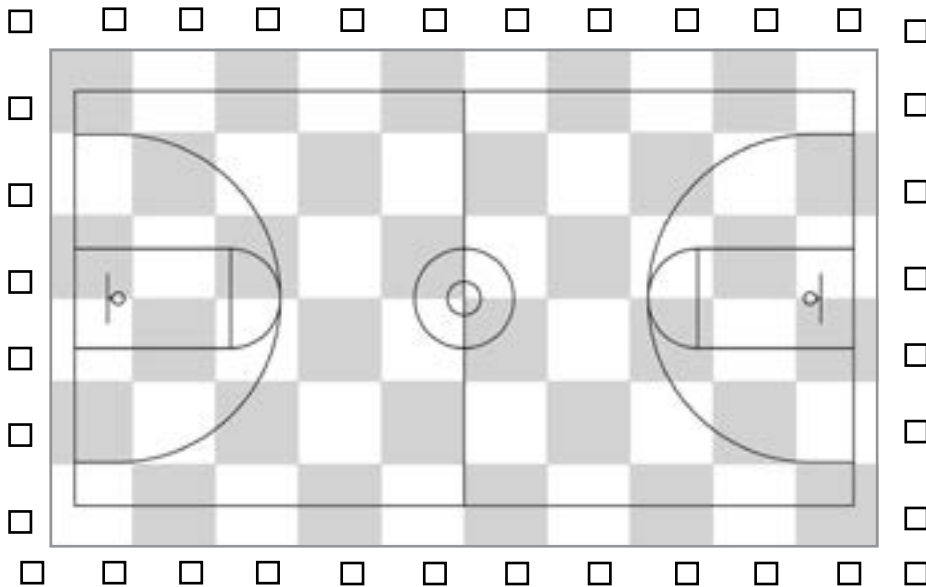
10' x 10' grid



### Instructions – Horizontal Light Level Readings:

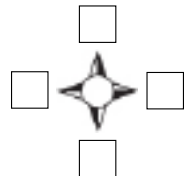
Complete for all surveys.

If outdoors, click outside the court perimeter to select approximate pole locations on the layout below.



### Court Orientation:

(Please indicate court orientation in cells around diagram to the right.)



Horizontal Light Level and Court Survey Results:	
Average light levels:	_____
Uniformity:	_____
(If outdoor) Quantity of poles:	_____
Total # luminaires:	_____
# luminaires operational:	_____
Lamp wattage:	_____
System voltage (if available):	_____
Date lighting system installed:	_____
Lighting manufacturer:	_____
Date of last group relamp:	_____
Annual hours of operation:	_____
Light meter brand:	_____
Model #:	_____
Calibration date:	_____
Include facility photographs that may be helpful for camera or temporary lighting equipment locations, such as, standing on the center court line pointing towards hanging scoreboard and any obstructions on the catwalks where fixtures are unable to be located.	

College/Organization Name: \_\_\_\_\_

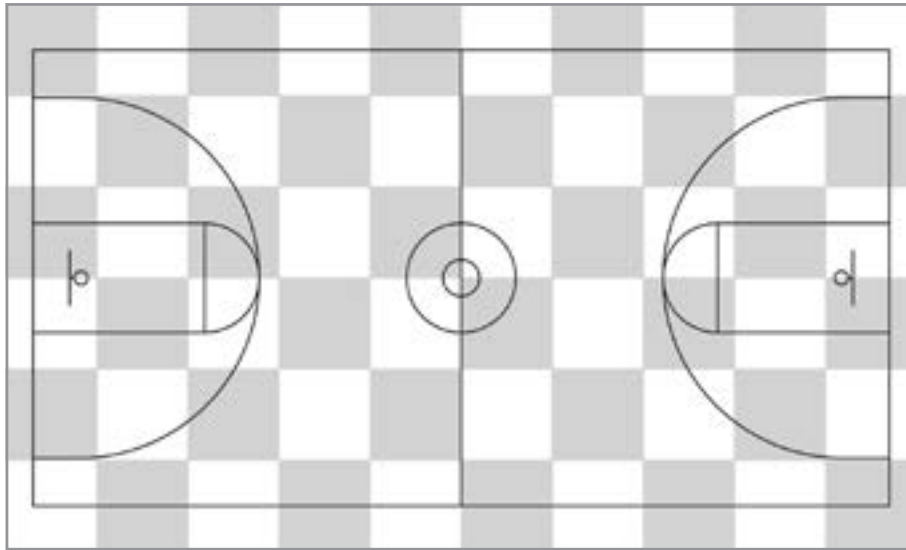
**Center Court Camera Vertical Light Level Readings:**  
**Complete only if televised levels apply.**

Readings are taken in the middle of each square with light meter held 36 inches above the ground, pointing towards center court line camera.

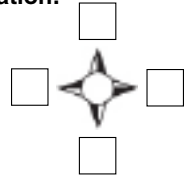
Center Court Camera Vertical Light Level Results:
Average light levels: _____
Uniformity: _____



**Required:**  
Take picture standing at camera location, facing field of play to evaluate skip glare.



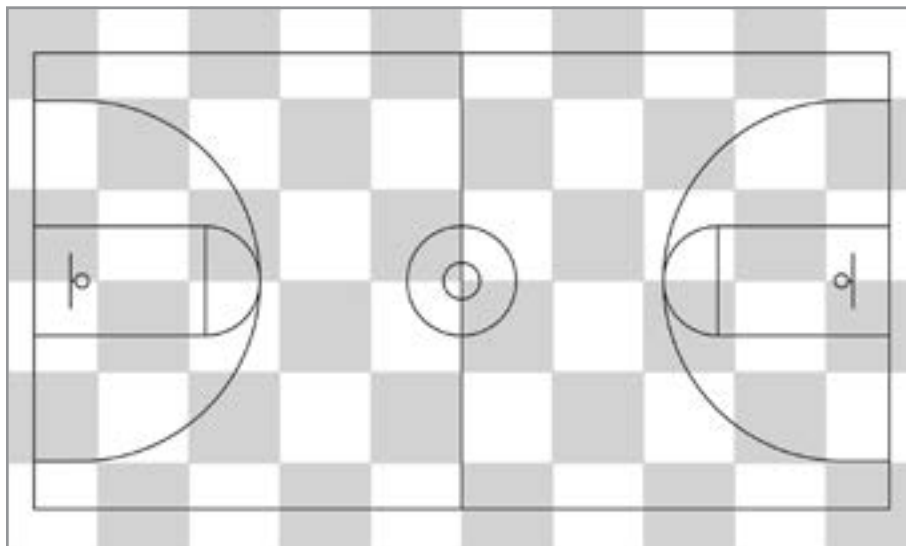
**Court Orientation:**



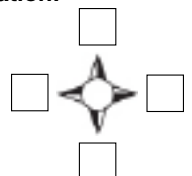
**End Camera Vertical Light Level Readings:**  
**Complete only if televised levels apply.**

Readings are taken in the middle of each square with light meter held 36 inches above the ground, pointing towards the end camera.

End Camera Vertical Light Level Results:
Average light levels: _____
Uniformity: _____



**Court Orientation:**

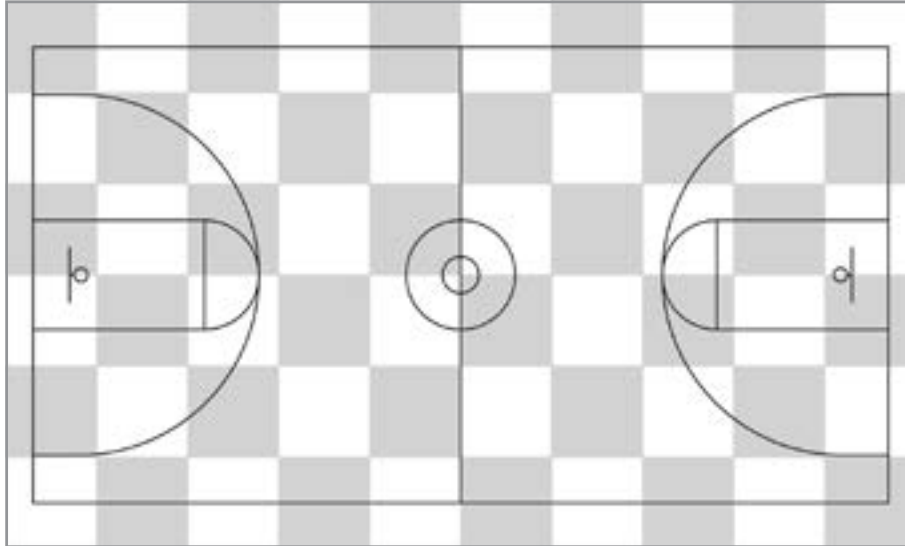


College/Organization Name: \_\_\_\_\_

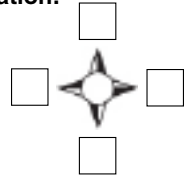
**Opposite Center Court Camera Vertical Light Level Readings:**  
Complete only if televised levels apply.

Readings are taken in the middle of each square with light meter held 36 inches above the ground, pointing towards center court line camera.

Opposite Center Court Camera Vertical Light Level Results:
Average light levels: _____
Uniformity: _____



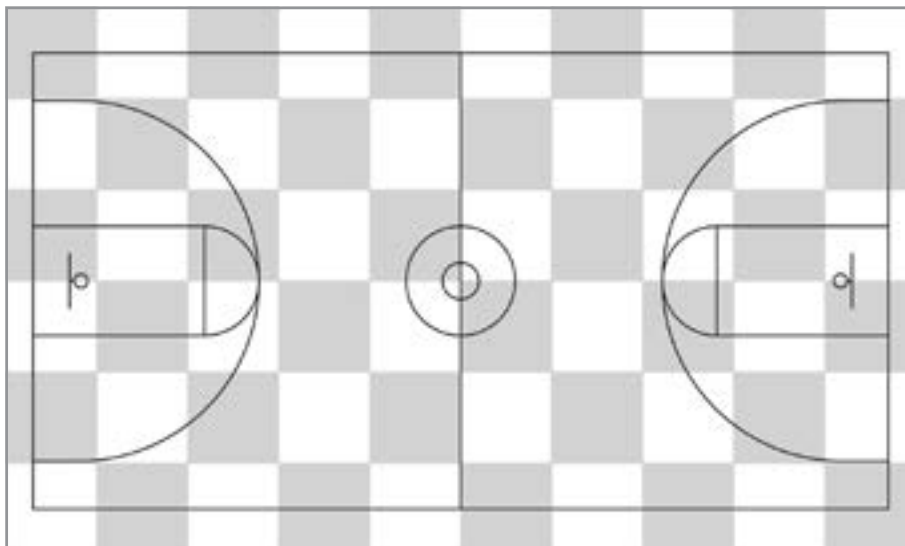
Court Orientation:



**End Camera Vertical Light Level Readings:**  
Complete only if televised levels apply.

Readings are taken in the middle of each square with light meter held 36 inches above the ground, pointing towards the end camera.

End Camera Vertical Light Level Results:
Average light levels: _____
Uniformity: _____



Court Orientation:

