

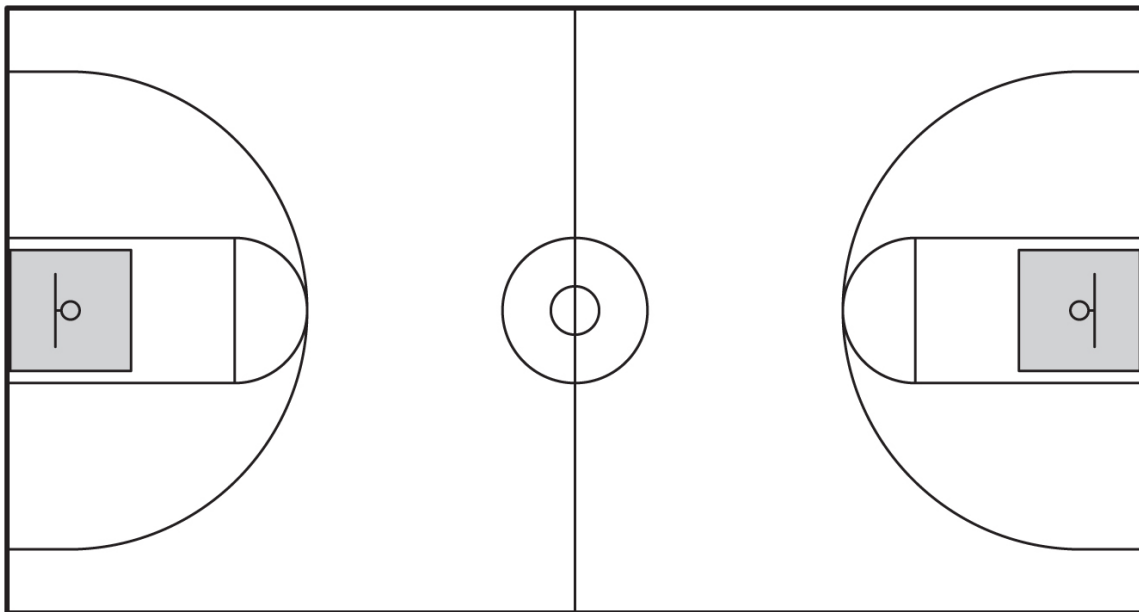


## Best Lighting Practices: Basketball *Streaming Broadcast (Intercollegiate Play)*

**Summary:** Following these recommended best practices will help ensure quality of light needed for the safety of participants and the enjoyment of spectators, as required.

Horizontal light levels: 80 footcandles  
Horizontal uniformity: 2.0:1  
Grid spacing: 10 ft x 10 ft

Typical facility layout:



1. For new facilities or upgrades, it is recommended to consult a lighting professional for optimal luminaire placement and catwalk locations.
2. As a general rule, due to mounting heights, lower wattage luminaires are used, commonly 1000 watt.
3. No luminaires are recommended in shaded areas directly aimed to the field of play.